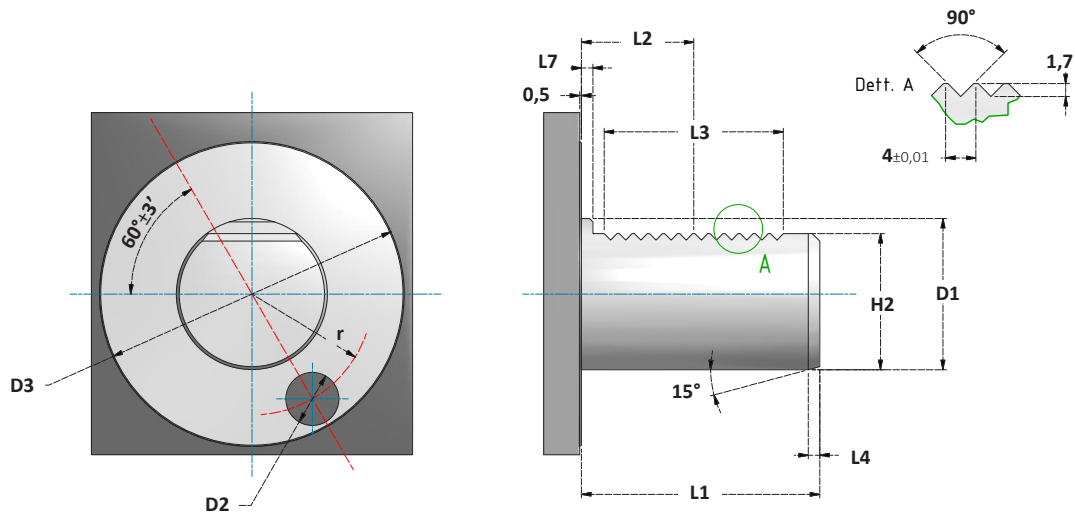
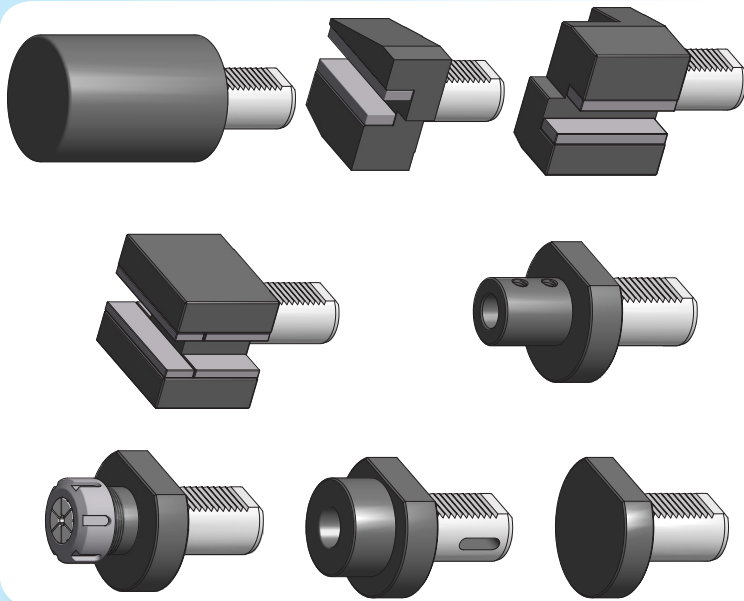


MANDRINI VDI
VDI TOOLHOLDERS



DIMENSIONI
DIMENSIONS

VDI	D1	D2	D3	L1	L2	L3	L4	L7	H2	r
	h6	H8		±0,3	±0,05	min	$\begin{smallmatrix} +1 \\ 0 \end{smallmatrix}$		±0,1	±0,02
30	30	14	68	55	29,7	40	2	7	27	25
40	40	14	83	63	29,7	40	3	7	36	32
50	50	16	98	78	35,7	48	3	8	45	37
60	60	16	123	94	43,7	56	4	10	55	48



PORTAUTENSILI VDI FORMA A

VDI TOOLHOLDERS FORM A

PORTAUTENSILI VDI FORMA B

VDI TOOLHOLDERS FORM B

PORTAUTENSILI VDI FORMA C

VDI TOOLHOLDERS FORM C

PORTAUTENSILI VDI FORMA D

VDI TOOLHOLDERS FORM D

PORTAUTENSILI VDI FORMA E

VDI TOOLHOLDERS FORM E

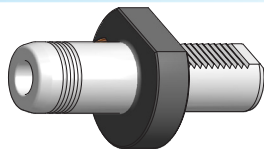
PORTAUTENSILI VDI FORMA F

VDI TOOLHOLDERS FORM F

PORTAUTENSILI VDI FORMA Z

VDI TOOLHOLDERS FORM Z

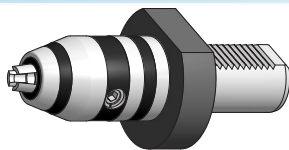
PAG. 191



PORTAUTENSILI IDRAULICI

HYDRAULIC TOOLHOLDERS

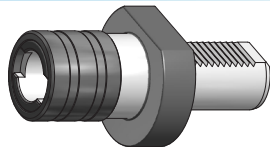
PAG. 202



MANDRINI DA TRAPANO

DRILL CHUCKS

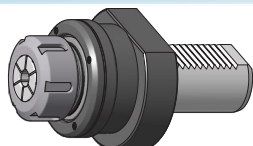
PAG. 202



MASCHIATORI

TAPPING CHUCKS

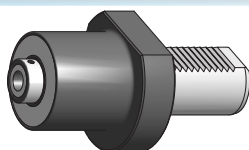
PAG. 203



PORTA ALESATORI OSCILLANTI

FLOATING REAMER HOLDERS

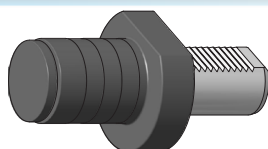
PAG. 204



BROCCIATORI

BROACHING TOOLHOLDERS

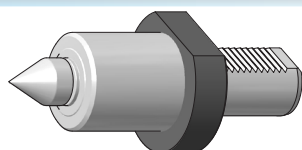
PAG. 205



FERMI BARRA

STOP SHOCK ABSORBERS

PAG. 206



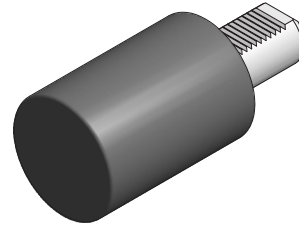
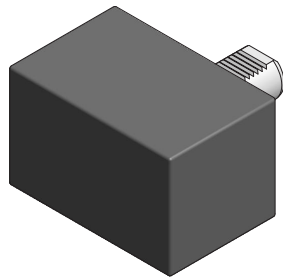
CONTROPUNTE ROTANTI

LIVE CENTERS

PAG. 206

PORTAUTENSILI VDI LAVORABILI

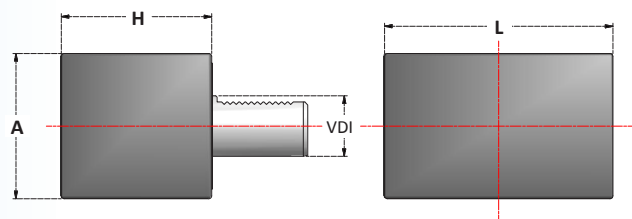
MACHINABLE VDI TOOLHOLDERS



PORTAUTENSILI LAVORABILI RETTANGOLARI

RECTANGULAR BLANK TOOLHOLDERS

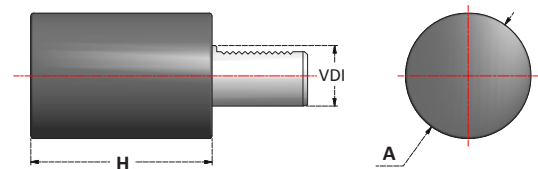
Articolo	VDI	H	A	L
VDI30.A1	30	85	76	130
VDI40.A1	40	100	96	151
VDI50.A1	50	125	120	160
VDI60.A1	60	160	125	165



PORTAUTENSILI LAVORABILI ROTONDI

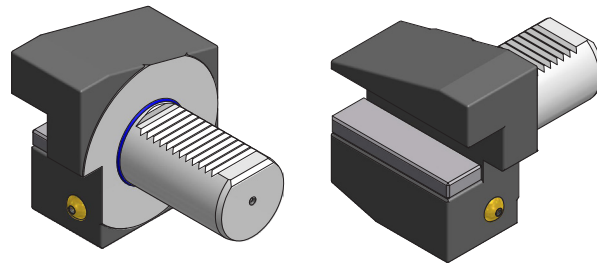
ROUND BLANK TOOLHOLDERS

Articolo	VDI	H	A
VDI30.A2	30	100	68
VDI40.A2	40	120	83
VDI50.A2	50	135	98
VDI60.A2	60	150	123



PORTAUTENSILI VDI CON SEDE TRASVERSALE

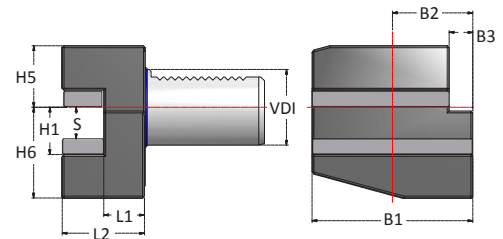
RADIAL VDI TOOLHOLDERS



PORTAUTENSILI VDI FORMA B1 - DESTRI - CORTI

VDI TOOLHOLDERS FORM B1 - RIGHT - SHORT

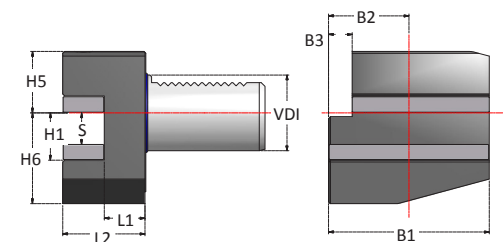
Articolo	VDI	H1	S	H5	H6	L1	L2	B1	B2	B3
VDI30.B1	30	20	16	28	38	22	40	70	35	10
VDI40.B1	40	25	20	32,5	48	22	44	85	42,5	12,5
VDI50.B1	50	32	25	35	60	30	55	100	50	16
VDI60.B1	60	32	25	42,5	62,5	30	60	125	62,5	16



PORTAUTENSILI VDI FORMA B2 - SINISTRI - CORTI

VDI TOOLHOLDERS FORM B2 - LEFT - SHORT

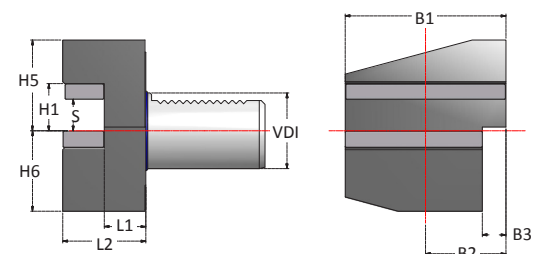
Articolo	VDI	H1	S	H5	H6	L1	L2	B1	B2	B3
VDI30.B2	30	20	16	28	38	22	40	70	35	10
VDI40.B2	40	25	20	32,5	48	22	44	85	42,5	12,5
VDI50.B2	50	32	25	35	60	30	55	100	50	16
VDI60.B2	60	32	25	42,5	62,5	40	60	125	62,5	16



PORTAUTENSILI VDI FORMA B3 - ROVESCIA TI DESTRI - CORTI

VDI TOOLHOLDERS FORM B3 - OVERHEAD RIGHT - SHORT

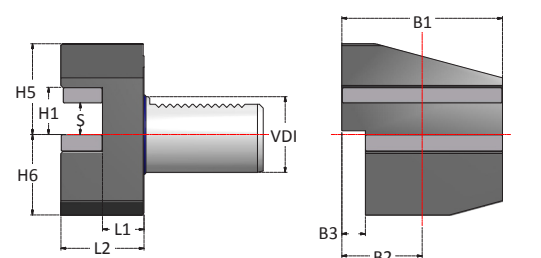
Articolo	VDI	H1	S	H5	H6	L1	L2	B1	B2	B3
VDI30.B3	30	20	16	28	38	22	40	70	35	10
VDI40.B3	40	25	20	32,5	48	22	44	85	42,5	12,5
VDI50.B3	50	32	25	35	60	30	55	100	50	16
VDI60.B3	60	32	25	42,5	62,5	40	60	125	62,5	16



PORTAUTENSILI VDI FORMA B4 - ROVESCIA TI SINISTRI - CORTI

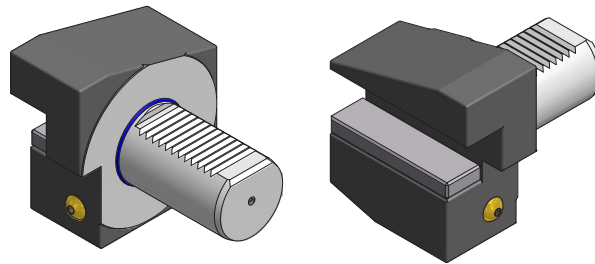
VDI TOOLHOLDERS FORM B4 - OVERHEAD LEFT - SHORT

Articolo	VDI	H1	S	H5	H6	L1	L2	B1	B2	B3
VDI30.B4	30	20	16	28	38	22	40	70	35	10
VDI40.B4	40	25	20	32,5	48	22	44	85	42,5	12,5
VDI50.B4	50	32	25	35	60	30	55	100	50	16
VDI60.B4	60	32	25	42,5	62,5	40	60	125	62,5	16



PORTAUTENSILI VDI CON SEDE TRASVERSALE

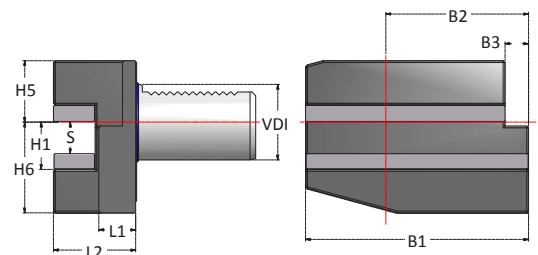
RADIAL VDI TOOLHOLDERS



PORTAUTENSILI VDI FORMA B5 - DESTRI - LUNGHI

VDI TOOLHOLDERS FORM B5 - RIGHT - LONG

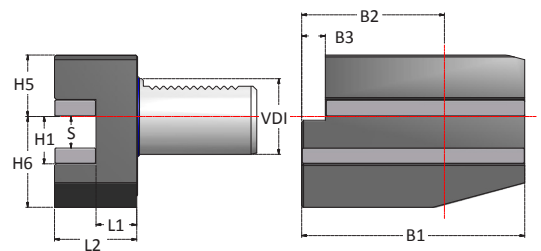
Articolo	VDI	H1	S	H5	H6	L1	L2	B1	B2	B3
VDI30.B5	30	20	16	28	38	22	40	100	65	10
VDI40.B5	40	25	20	32,5	48	22	44	118	75,5	12,5
VDI50.B5	50	32	25	35	60	30	55	130	80	16
VDI60.B5	60	32	25	42,5	62,5	40	60	145	82,5	16



PORTAUTENSILI VDI FORMA B6 - SINISTRI - LUNGHI

VDI TOOLHOLDERS FORM B6 - LEFT - LONG

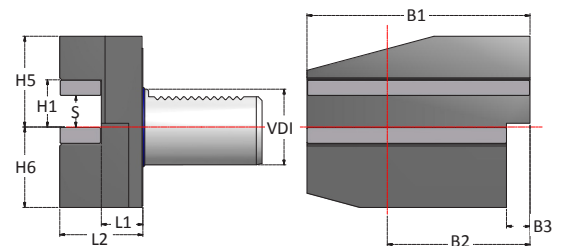
Articolo	VDI	H1	S	H5	H6	L1	L2	B1	B2	B3
VDI30.B6	30	20	16	28	38	22	40	100	65	10
VDI40.B6	40	25	20	32,5	48	22	44	118	75,5	12,5
VDI50.B6	50	32	25	35	60	30	55	130	80	16
VDI60.B6	60	32	25	42,5	62,5	40	60	145	82,5	16



PORTAUTENSILI VDI FORMA B7 - ROVESCIA TI DESTRI - LUNGHI

VDI TOOLHOLDERS FORM B7 - OVERHEAD RIGHT - LONG

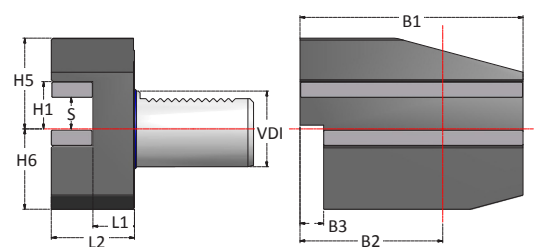
Articolo	VDI	H1	S	H5	H6	L1	L2	B1	B2	B3
VDI30.B7	30	20	16	28	38	22	40	100	65	10
VDI40.B7	40	25	20	32,5	48	22	44	118	75,5	12,5
VDI50.B7	50	32	25	35	60	30	55	130	80	16
VDI60.B7	60	32	25	42,5	62,5	40	60	145	82,5	16



PORTAUTENSILI VDI FORMA B8 - ROVESCIA TI SINISTRI - LUNGHI

VDI TOOLHOLDERS FORM B8 - OVERHEAD LEFT - LONG

Articolo	VDI	H1	S	H5	H6	L1	L2	B1	B2	B3
VDI30.B8	30	20	16	28	38	22	40	100	65	10
VDI40.B8	40	25	20	32,5	48	22	44	118	75,5	12,5
VDI50.B8	50	32	25	35	60	30	55	130	80	16
VDI60.B8	60	32	25	42,5	62,5	40	60	145	82,5	16

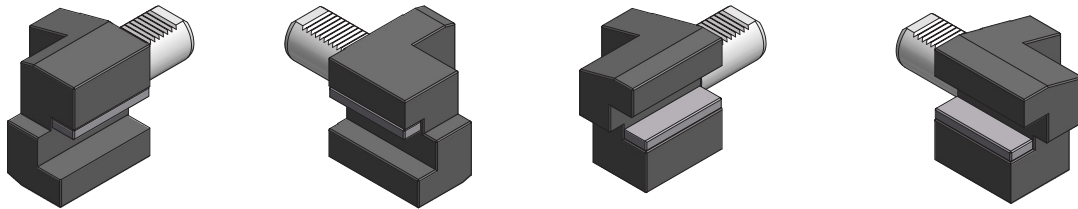


ACCESSORI - ACCESSORIES



PORTAUTENSILI VDI CON SEDE LONGITUDINALE

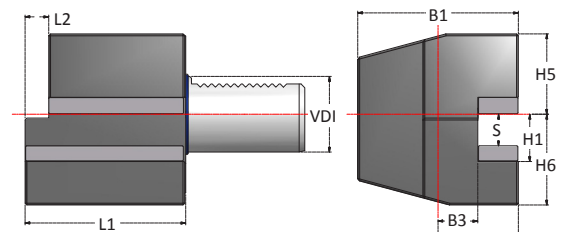
AXIAL VDI TOOLHOLDERS



PORTAUTENSILI VDI FORMA C1 - DESTRI

VDI TOOLHOLDERS FORM C1 - RIGHT

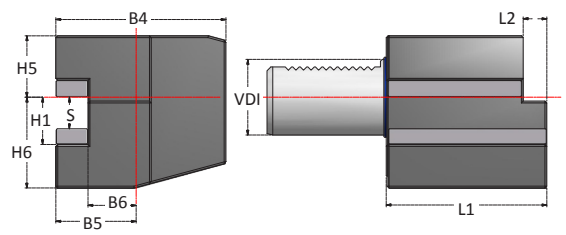
Articolo	VDI	H1	S	H5	H6	L1	L2	B1	B2	B3
VDI30.C1	30	20	16	28	38	70	10	70	35	17
VDI40.C1	40	25	20	32,5	48	85	12,5	85	42,5	21
VDI50.C1	50	32	25	35	60	100	16	100	50	26
VDI60.C1	60	32	25	42,5	62,5	125	16	125	62,5	33



PORTAUTENSILI VDI FORMA C2 - SINISTRI

VDI TOOLHOLDERS FORM C2 - LEFT

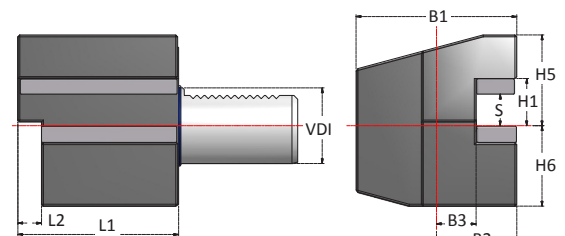
Articolo	VDI	H1	S	H5	H6	L1	L2	B4	B5	B6
VDI30.C2	30	20	16	28	38	70	10	76	41	23
VDI40.C2	40	25	20	32,5	48	85	12,5	90	47,5	25,5
VDI50.C2	50	32	25	35	60	100	16	105	55	30,5
VDI60.C2	60	32	25	42,5	62,5	125	16	125	62,5	33



PORTAUTENSILI VDI FORMA C3 - ROVESCIA TI DESTRI

VDI TOOLHOLDERS FORM C3 - OVERHEAD RIGHT

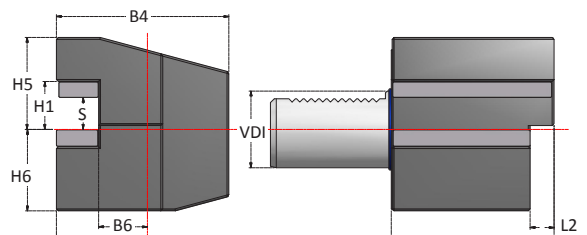
Articolo	VDI	H1	S	H5	H6	L1	L2	B1	B2	B3
VDI30.C3	30	20	16	28	38	70	10	70	35	17
VDI40.C3	40	25	20	32,5	48	85	12,5	85	42,5	21
VDI50.C3	50	32	25	35	60	100	16	100	50	26
VDI60.C3	60	32	25	42,5	62,5	125	16	125	62,5	33



PORTAUTENSILI VDI FORMA C4 - ROVESCIA TI SINISTRI

VDI TOOLHOLDERS FORM C4 - OVERHEAD LEFT

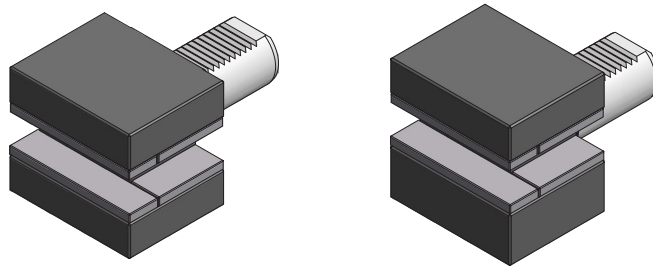
Articolo	VDI	H1	S	H5	H6	L1	L2	B4	B5	B6
VDI30.C4	30	20	16	28	38	70	10	76	41	23
VDI40.C4	40	25	20	32,5	48	85	12,5	90	47,5	25,5
VDI50.C4	50	32	25	35	60	100	16	105	55	30,5
VDI60.C4	60	32	25	42,5	62,5	125	16	125	62,5	33



ACCESSORI - ACCESSORIES



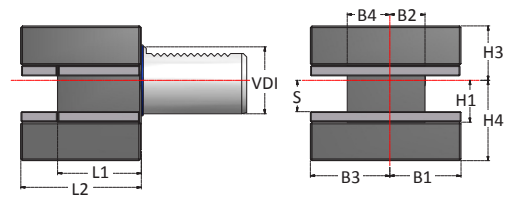
PORTAUTENSILI VDI A PIU' SEDI
VDI TOOLHOLDERS WITH MULTIPLE SEATS



PORTAUTENSILI VDI FORMA D1

VDI TOOLHOLDERS FORM D1

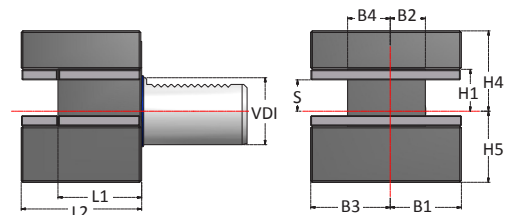
Articolo	VDI	H1	S	H3	H4	L1	L2	B1	B2	B3	B4
VDI30.D1	30	20	16	28	38	42	60	35	17	41	23
VDI40.D1	40	25	20	32,5	48	50	72	42,5	21	47,5	25,5
VDI50.D1	50	32	25	35	60	60	85	50	26	55	30,5
VDI60.D1	60	32	25	42,5	62,5	85	110	57,5	33	57,5	33



PORTAUTENSILI VDI FORMA D2

VDI TOOLHOLDERS FORM D2

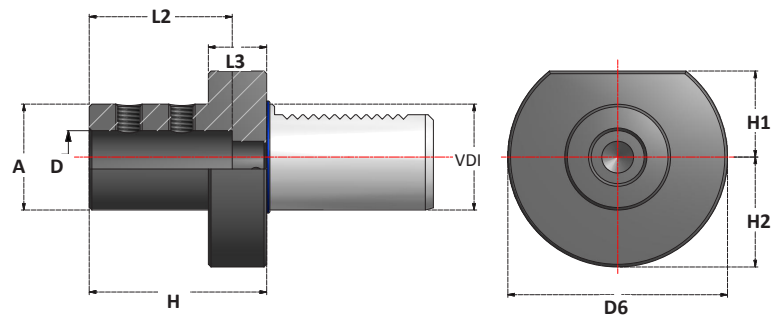
Articolo	VDI	H1	S	H4	H5	L1	L2	B1	B2	B3	B4
VDI30.D2	30	20	16	38	35	42	60	35	17	41	23
VDI40.D2	40	25	20	48	42,5	50	72	42,5	21	47,5	25,5
VDI50.D2	50	32	25	60	50	60	85	50	26	55	30,5
VDI60.D2	60	32	25	62,5	62,5	85	110	57,5	33	57,5	33



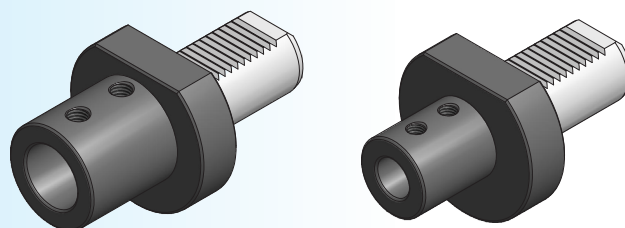
ACCESSORI - ACCESSORIES



PORTAUTENSILI VDI PER PUNTE A INSERTI
VDI TOOLHOLDERS FOR INDEXABLE INSERT DRILLS

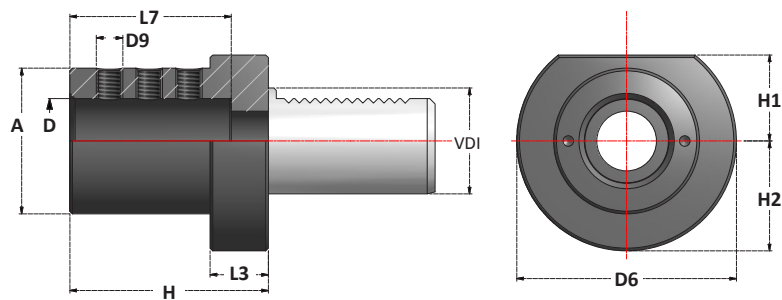


Articolo	VDI	D	A	H	L2	L3	D6	H1	H2
VDI30.E1-16	30	16	36	67	54	22	68	28	30
VDI30.E1-20	30	20	40	67	54	22	68	28	30
VDI30.E1-25	30	25	45	71	59	22	68	28	30
VDI30.E1-32	30	32	52	75	63	22	68	28	30
VDI30.E1-40	30	40	65	90	72	22	68	28	30
VDI40.E1-16	40	16	36	67	54	22	83	32,5	/
VDI40.E1-20	40	20	40	67	54	22	83	32,5	/
VDI40.E1-25	40	25	45	75	59	22	83	32,5	/
VDI40.E1-32	40	32	52	75	63	22	83	32,5	/
VDI40.E1-40	40	40	65	90	73	22	83	32,5	/
VDI40.E1-50	40	50	70	100	83	22	83	32,5	/
VDI50.E1-16	50	16	36	80	54	30	98	35	/
VDI50.E1-20	50	20	40	80	54	30	98	35	/
VDI50.E1-25	50	25	45	80	59	30	98	35	/
VDI50.E1-32	50	32	52	80	63	30	98	35	/
VDI50.E1-40	50	40	65	90	73	30	98	35	/
VDI50.E1-50	50	50	75	100	83	30	98	35	/
VDI60.E1-16	60	16	36	80	54	30	123	42,5	/
VDI60.E1-20	60	20	40	80	54	30	123	42,5	/
VDI60.E1-25	60	25	45	80	59	30	123	42,5	/
VDI60.E1-32	60	32	52	80	63	30	123	42,5	/
VDI60.E1-40	60	40	65	90	73	30	123	42,5	/
VDI60.E1-50	60	50	75	100	83	30	123	42,5	/



ACCESSORI - ACCESSORIES



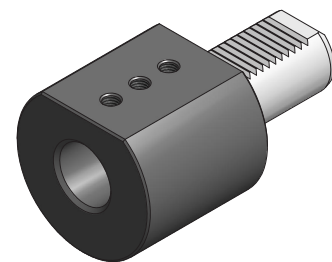
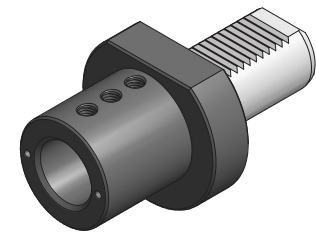
PORTAUTENSILI VDI PER BARENI
VDI BORING BAR TOOLHOLDERS


Articolo	VDI	D	A	H	L3	L7	D6	D9	H1	H2
VDI30.E2-6	30	6	55	60	22	51	68	M6	28	30
VDI30.E2-8	30	8	55	60	22	51	68	M6	28	30
VDI30.E2-10	30	10	55	60	22	51	68	M8	28	30
VDI30.E2-12	30	12	55	60	22	51	68	M8	28	30
VDI30.E2-16	30	16	55	60	22	51	68	M8	28	30
VDI30.E2-20	30	20	55	60	22	51	68	M8	28	30
VDI30.E2-25	30	25	55	60	22	51	68	M8	28	30
VDI30.E2-32	30	32	68	75	22	61	68	M8	28	30
VDI30.E2-40	30	40	68	75	22	61	68	M8	28	30

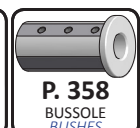
VDI40.E2-6	40	6	55	75	22	43	83	M6	32,5	/
VDI40.E2-8	40	8	55	75	22	43	83	M6	32,5	/
VDI40.E2-10	40	10	55	75	22	43	83	M8	32,5	/
VDI40.E2-12	40	12	55	75	22	58	83	M8	32,5	/
VDI40.E2-16	40	16	55	75	22	61	83	M10	32,5	/
VDI40.E2-20	40	20	55	75	22	61	83	M10	32,5	/
VDI40.E2-25	40	25	55	75	22	61	83	M10	32,5	/
VDI40.E2-32	40	32	83	75	22	61	83	M10	32,5	/
VDI40.E2-40	40	40	83	90	22	76	83	M10	32,5	/
VDI40.E2-50	40	50	83	90	22	76	83	M10	32,5	/

VDI50.E2-8	50	8	68	90	30	71	98	M6	35	/
VDI50.E2-10	50	10	68	90	30	71	98	M8	35	/
VDI50.E2-12	50	12	68	90	30	71	98	M8	35	/
VDI50.E2-16	50	16	68	90	30	76	98	M10	35	/
VDI50.E2-20	50	20	68	90	30	76	98	M12	35	/
VDI50.E2-25	50	25	68	90	30	76	98	M12	35	/
VDI50.E2-32	50	32	68	90	30	76	98	M12	35	/
VDI50.E2-40	50	40	98	90	30	76	98	M12	35	/
VDI50.E2-50	50	50	98	90	30	76	98	M12	35	/

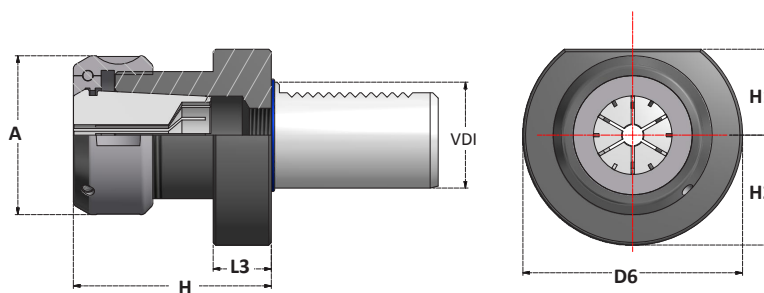
VDI60.E2-16	60	16	68	90	30	76	123	M10	42,5	/
VDI60.E2-20	60	20	68	90	30	76	123	M12	42,5	/
VDI60.E2-25	60	25	68	90	30	76	123	M12	42,5	/
VDI60.E2-32	60	32	68	90	30	76	123	M12	42,5	/
VDI60.E2-40	60	40	98	90	30	76	123	M12	42,5	/
VDI60.E2-50	60	50	98	90	30	86	123	M12	42,5	/


ACCESSORI - ACCESSORIES

P. 388

 SUPPORTI DI MONTAGGIO
ASSEMBLY DEVICES

P. 358

 BUSSOLE
BUSHES

PORTAUTENSILI VDI - FORMA E3
VDI TOOLHOLDERS - FORM E3

PORTAPINZE DIN6388
DIN6388 COLLETS CHUCKS

Articolo	VDI	A	H	L3	D6	H1	H2	Collets Range	Ghiera Nut
VDI30.E3.EOC25	30	60	75	22	68	28	30	2÷25	G25OCC
VDI30.E3.EOC32	30	72	90	22	68	28	30	3÷32	G32OCC
VDI40.E3.EOC25	40	60	75	22	83	32,5	/	2÷25	G25OCC
VDI40.E3.EOC32	40	72	90	22	83	32,5	/	3÷32	G32OCC
VDI50.E3.EOC25	50	60	75	30	98	35	/	2÷25	G25OCC
VDI50.E3.EOC32	50	72	90	30	98	35	/	3÷32	G32OCC
VDI60.E3.EOC25	60	60	75	30	123	42,5	/	2÷25	G25OCC
VDI60.E3.EOC32	60	72	90	30	123	42,5	/	3÷32	G32OCC

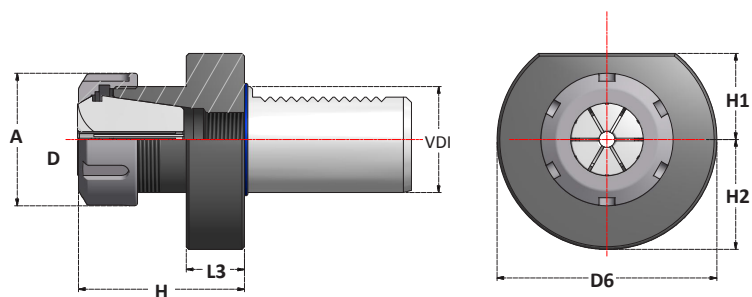
ACCESSORI - ACCESSORIES

P. 310
PINZE
COLLETS

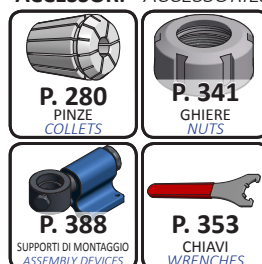
P. 347
GHIERE
NUTS

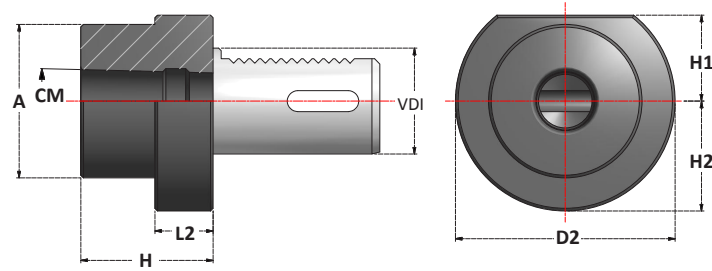
P. 388
SUPPORTI DI MONTAGGIO
ASSEMBLY DEVICES

P. 354
CHIAVI
WRENCHES

PORTAUTENSILI VDI - FORMA E4
VDI TOOLHOLDERS - FORM E4

PORTAPINZE DIN6499
DIN6499 COLLETS CHUCKS

Articolo	VDI	A	H	H1	H2	D6	L3	Collets Range	Ghiera Nut
VDI30.E4.ERC16	30	28	59	28	30	68	22	1+10	G16SE
VDI30.E4.ERC25	30	42	57	28	30	68	22	1+20	G25S
VDI30.E4.ERC32	30	50	78	28	30	68	22	2+22	G32S
VDI30.E4.ERC40	30	63	80	28	30	68	22	3+30	G40S
VDI40.E4.ERC25	40	42	57	32,5	/	83	22	1+20	G25S
VDI40.E4.ERC32	40	50	78	32,5	/	83	22	2+22	G32S
VDI40.E4.ERC40	40	63	80	32,5	/	83	22	3+30	G40S
VDI50.E4.ERC25	50	42	67	35	/	98	30	1+20	G25S
VDI50.E4.ERC32	50	50	92	35	/	98	30	2+22	G32S
VDI50.E4.ERC40	50	63	80	35	/	98	30	3+30	G40S
VDI60.E4.ERC32	60	50	78	42,5	/	123	30	2+22	G32S
VDI60.E4.ERC40	60	63	80	42,5	/	123	30	3+30	G40S

ACCESSORI - ACCESSORIES


PORTAUTENSILI VDI - FORMA F
VDI TOOLHOLDERS - FORM F

PORTAUTENSILI CON SEDE CONO MORSE
MORSE TAPER TOOLHOLDERS

Articolo	VDI	CM	A	H	L2	D2	H1	H2
VDI30.F.CM1P	30	1	/	27	-	68	28	30
VDI30.F.CM2P	30	2	55	36	27	68	28	30
VDI30.F.CM3P	30	3	55	66	41	68	28	30
VDI40.F.CM1P	40	1	55	23	22	83	32,5	/
VDI40.F.CM2P	40	2	55	36	22	83	32,5	/
VDI40.F.CM3P	40	3	58	36	22	83	32,5	/
VDI40.F.CM4P	40	4	68	80	22	83	32,5	/
VDI50.F.CM2P	50	2	55	36	30	98	35	/
VDI50.F.CM3P	50	3	58	45	30	98	35	/
VDI50.F.CM4P	50	4	68	55	30	98	35	/
VDI50.F.CM5P	50	5	75	72	30	98	35	/
VDI60.F.CM2P	60	2	55	35	30	123	42,5	/
VDI60.F.CM3P	60	3	58	45	30	123	42,5	/
VDI60.F.CM4P	60	4	68	55	30	123	42,5	/
VDI60.F.CM5P	60	5	98	64	30	123	42,5	/

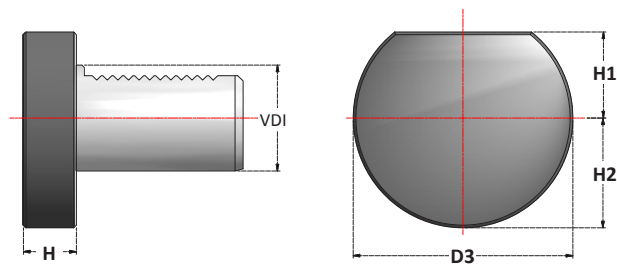
ACCESSORI - ACCESSORIES

P. 388

 SUPPORTI DI MONTAGGIO
ASSEMBLY DEVICES

P. 376

 ESTRATTORI
PULLERS

TAPPI DI PROTEZIONE VDI - FORMA Z
VDI PROTECTION PLUGS - FORM Z

TAPPI DI PROTEZIONE VDI IN ACCIAIO
STEEL VDI PROTECTION PLUGS

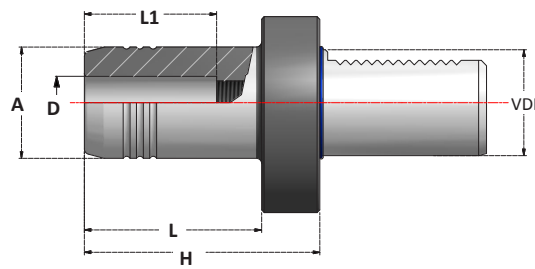
Articolo	VDI	H	D3	H1	H2
VDI30.Z2.A	30	16	68	28	30
VDI40.Z2.A	40	20	83	32,5	/
VDI50.Z2.A	50	20	98	35	/
VDI60.Z2.A	60	20	123	42,5	/

TAPPI DI PROTEZIONE VDI IN PLASTICA
PLASTIC VDI PROTECTION PLUGS

VDI30.Z2.P	30	16	68	28	30
VDI40.Z2.P	40	20	83	32,5	/
VDI50.Z2.P	50	20	98	35	/
VDI60.Z2.P	60	20	123	42,5	/

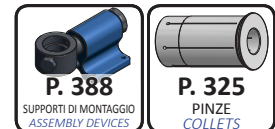
PORTAUTENSILI IDRAULICI VDI

VDI HYDRAULIC TOOLHOLDERS



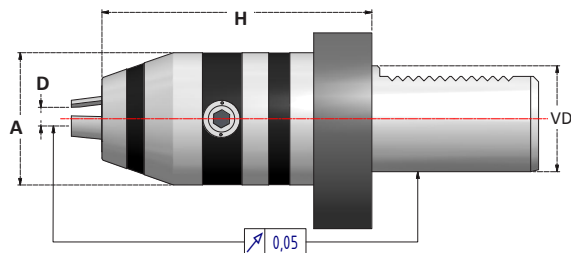
Articolo	VDI	D	A	H	L	L1
VDI30.HY20	30	20	42	89	73	42
VDI30.HY32	30	32	60	94	78	52
VDI40.HY20	40	20	42	95	73	42
VDI40.HY32	40	32	60	100	78	52
VDI50.HY20	50	20	42	95	65	42
VDI50.HY32	50	32	60	95	65	52

ACCESSORI - ACCESSORIES



PORTAPUNTE AUTOSERRANTI VDI CON PASSAGGIO DEL REFRIGERANTE

VDI DRILL CHUCK WITH COOLANT BORE



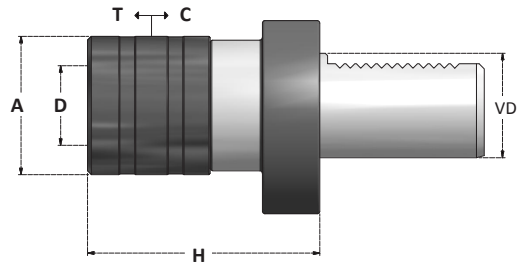
Articolo	D	VDI	H	A
VDI30.HD8	0,5 ÷ 8	30	68	36
VDI30.HD13	1 ÷ 13	30	87	57
VDI30.HD16	2,5 ÷ 16	30	92	57
VDI40.HD13	1 ÷ 13	40	87	57
VDI40.HD16	2,5 ÷ 16	40	92	57
VDI50.HD13	1 ÷ 13	50	92	57
VDI50.HD16	2,5 ÷ 16	50	97	57

ACCESSORI - ACCESSORIES



MASCHIATORI VDI CON COMPENSAZIONE ASSIALE

VDI TAPPING CHUCKS WITH AXIAL COMPENSATION



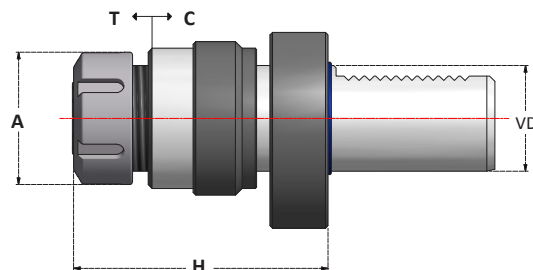
Articolo	VDI	Bussola Adapter	D	Capacità Bussola Adapter Range	H	A	T	C
VDI30.MCR1TC	30	B1/BF1	19	M3÷M12	55	38	7,5	7,5
VDI30.MCR2TC	30	B2/BF2	31	M6÷M20	77	55	12,5	12,5
VDI40.MCR1TC	40	B1/BF1	19	M3÷M12	55	38	7,5	7,5
VDI40.MCR2TC	40	B2/BF2	31	M6÷M20	77	55	12,5	12,5
VDI40.MCR3TC	40	B3/BF3	48	M14÷M33	110	79	20	20
VDI50.MCR1TC	50	B1/BF1	19	M3÷M12	55	38	7,5	7,5
VDI50.MCR2TC	50	B2/BF2	31	M6÷M20	77	55	12,5	12,5
VDI50.MCR3TC	50	B3/BF3	48	M14÷M33	110	79	20	20

ACCESSORI - ACCESSORIES



PORTAMASCHI VDI AD ESTRAZIONE E COMPRESSIONE

EXTRACTION AND COMPRESSION VDI TAP HOLDERS



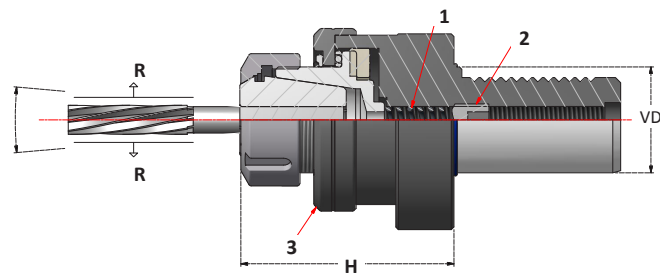
Articolo	VDI	A	H	T	C	Collets Range	Tapping Range	Ghiera Nut
VDI30.ERC25TC	30	42	84	12	4	3,5 ÷ 16	M3 ÷ M20	G25S
VDI30.ERC32TC	30	50	86	12	4	3,5 ÷ 20	M3 ÷ M27	G32S
VDI40.ERC25TC	40	42	86	12	4	3,5 ÷ 16	M3 ÷ M20	G25S
VDI40.ERC32TC	40	50	88	12	4	3,5 ÷ 20	M3 ÷ M27	G32S



ACCESSORI - ACCESSORIES



PORTA ALESATORI OSCILLANTI CON PASSAGGIO DEL REFRIGERANTE
FLOATING REAMER HOLDERS WITH COOLANT FLOW



Articolo	VDI	H	R	Collets range	Ghiera Nut
VDI30.RM25	30	64	1	1÷20	G25S
VDI30.RM32	30	72	1,5	2÷22	G32S
VDI40.RM32	40	74	1,5	2÷22	G32S
VDI40.RM40	40	74	1,5	3÷30	G40S

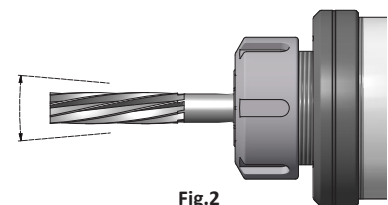


Fig.2

R = Capacità di movimento radiale più o meno dal centro
R = Radial stroke from center

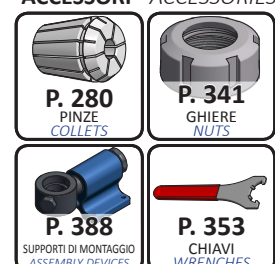
L'alesatore oscilla su un cuscinetto a sfere per compensare gli errori di allineamento tra il mandrino della macchina e il pezzo in lavorazione.

- La spinta della molla **1** mantiene l'utensile centrato anche in posizione orizzontale.
- La vite **2** regola la pressione della molla per regolare il movimento radiale.
- Allentando di 0,1/0,2mm la ghiera **3** si permette all'alesatore di avere un movimento pendolare. (Fig2)

Free moving ball bearing drive permits to reamer to follow drilled hole of workpiece.

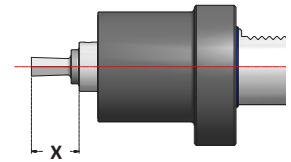
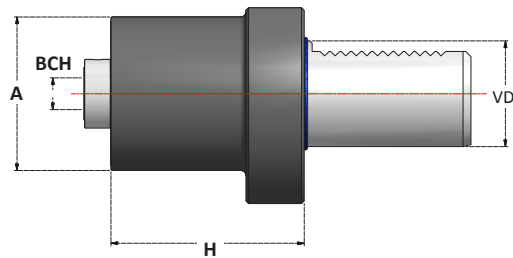
- Pressure of spring **1** keeps reamer centered, even in the horizontal position.
- Screw **2** allows adjustment of floating level.
- Unscrewing nut **3** for 0,1/0,2mm, reamer has a pendulum float. (Fig 2)

ACCESSORI - ACCESSORIES

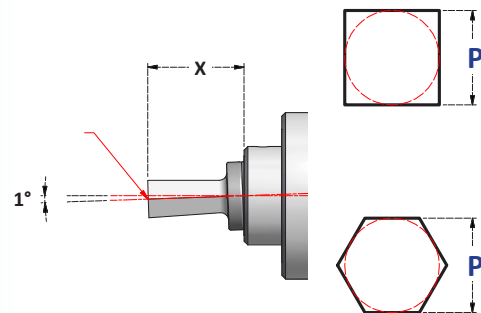


BROCCIATORI

BROACHING TOOLHOLDERS



Articolo	VDI	BCH	X	H	A
VDI30.BCH12	30	12	25	83	58
VDI30.BCH16	30	16	40	83	58
VDI40.BCH12	40	12	25	83	58
VDI40.BCH16	40	16	40	83	58



ISTRUZIONI D'USO

- DIAMETRO DI FORATURA

Eseguire una foratura maggiorata di 0,2 - 0,3mm rispetto alla quota **P** della brocciatura da eseguire per rendere meno gravoso l'avanzamento dell'utensile.

- GIRI DELLA BROCCIA

1000 - 1500 (giri/min)

- AVANZAMENTO DELLA BROCCIA

0,01 - 0,03 (mm/giro)

- LUNGHEZZA DELLE BROCCHE

Per questi brocciatori è importante usare brocche con lunghezza **X**.

INSTRUCTIONS

- DRILLING DIAMETER

Make hole 0,2-0,3mm larger than size **P** of broach.

- ROTATION SPEED

1000 - 1500 (rpm)

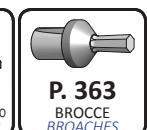
- FEED

0,01 - 0,03 (mm/rpm)

- BROACHING LENGHT

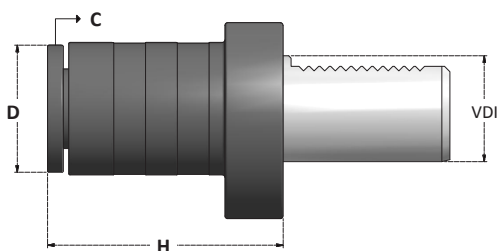
In this toolholder is important to use broaches with lenghts **X**.

ACCESSORI - ACCESSORIES



FERMI BARRA ROTANTI

ROTATING STOP SHOCK ABSORBERS



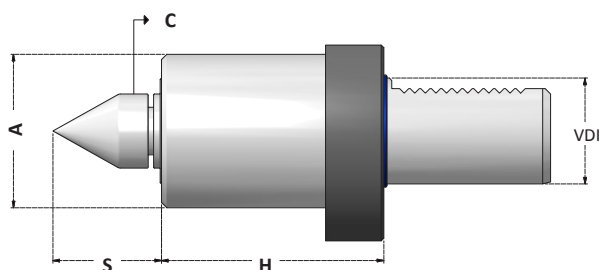
Articolo	VDI	D	H	C*
VDI30.SAS35	30	35	70	3
VDI30.SAS56	30	56	70	3
VDI40.SAS40	40	40	78	3
VDI40.SAS60	40	60	78	3

* **CORSA DI COMPRESSIONE**

* *ABSORBER STROKE*

CONTROPUNTE ROTANTI CON COMPRESSIONE

LIVE CENTRES WITH COMPRESSION



Articolo	VDI	A	H	S	C*
VDI30.CNP	30	58	78	34	2,5
VDI40.CNP	40	58	80	34	2,5

* **CORSA DI COMPRESSIONE**

* *ABSORBER STROKE*

**FORNITI CON CUSPIDE
CNP.CS1**

*SUPPLIED WITH TIP
CNP.CS1*

**CUSPIDI INTERCAMBIABILI
INTERCHANGEABLE TIPS**

ACCESSORI - ACCESSORIES

