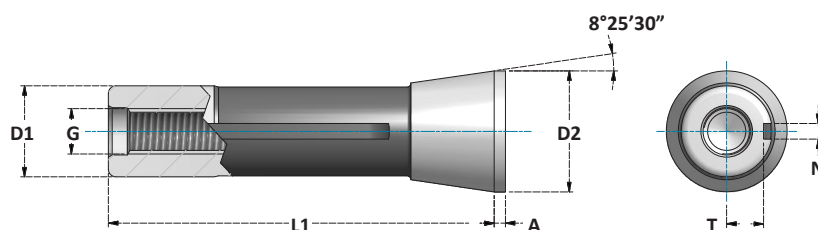
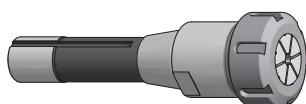


**MANDRINI R8**  
*R8 TOOLHOLDERS*



**DIMENSIONI**  
*DIMENSIONS*

D1	D2	L1	G	A	N	T
		MAX	MAX			
24,12	32	101,6	7/16- 20 NF-2B	3,17	4	2,5



**MANDRINI PORTAPINZA ER**  
*ER COLLET CHUCKS*

*PAG. 228*



**MANDRINI DI RIDUZIONE CONO MORSE PER PUNTE**  
*MORSE TAPER ADAPTERS*

*PAG. 228*



**ATTACCHI PER MANDRINI AUTOSERRANTI**  
*DRILL CHUCKS ARBORS*

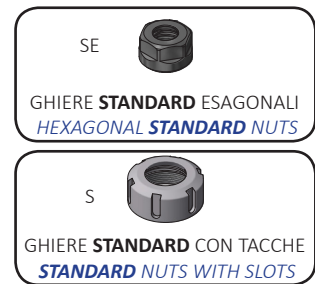
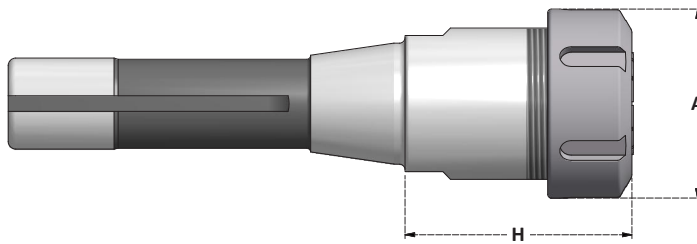
*PAG. 229*



**MANDRINI DA TRAPANO**  
*DRILL CHUCKS*

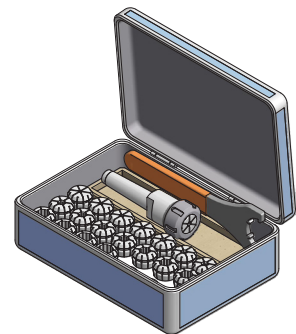
*PAG. 229*

**MANDRINI PORTAPINZA ER**  
*ER COLLET CHUCKS*



Articolo	H	A	Range D	Ghiera Nut
<b>R8.H44.ERC16</b>	44	28	1÷10	G16SE
<b>R8.H47.ERC20</b>	47	34	1÷14	G20SE
<b>R8.H50.ERC25</b>	50	42	1÷20	G25
<b>R8.H63.ERC32</b>	63	50	2÷22	G32
<b>R8.H72.ERC40</b>	72	63	3÷30	G40

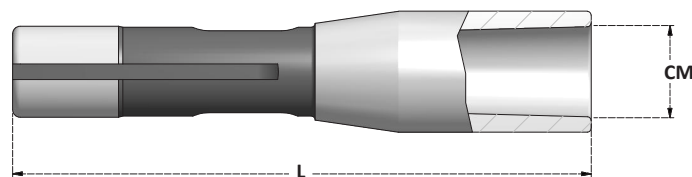
**KIT - MANDRINO, CHIAVE E PINZE**  
*KIT - TOOLHOLDER, WRENCH AND COLLETS*



Articolo	Pinze Collets	Mandrino Chuck	Chiave Wrench
<b>BX.R8.ERC16</b>	ERC16.D1÷D10 x 1,0mm	R8.H44.ERC16	CH.E16
<b>BX.R8.ERC20</b>	ERC20.D2÷D13 x 1,0mm	R8.H47.ERC20	CH.E20
<b>BX.R8.ERC25</b>	ERC25.D2÷D16 x 1,0mm	R8.H50.ERC25	CH25S
<b>BX.R8.ERC32</b>	ERC32.D3÷D20 x 1,0mm	R8.H63.ERC32	CH32S
<b>BX.R8.ERC40</b>	ERC40.D4÷D26 x 1,0mm	R8.H72.ERC40	CH40S



**MANDRINI DI RIDUZIONE CONO MORSE PER PUNTE**  
*MORSE TAPER ADAPTERS FOR DRILLS*



Articolo	CM	L
<b>R8.L114.CM1</b>	CM1	114
<b>R8.L127.CM2</b>	CM2	127
<b>R8.L153.CM3</b>	CM3	153
<b>R8.L240.CM4</b>	CM4	240

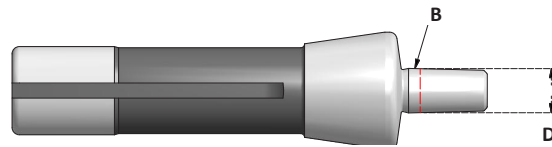


**ACCESSORI - ACCESSORIES**



**ATTACCHI PER MANDRINI AUTOSERRANTI**

*DRILL CHUCKS ARBORS*



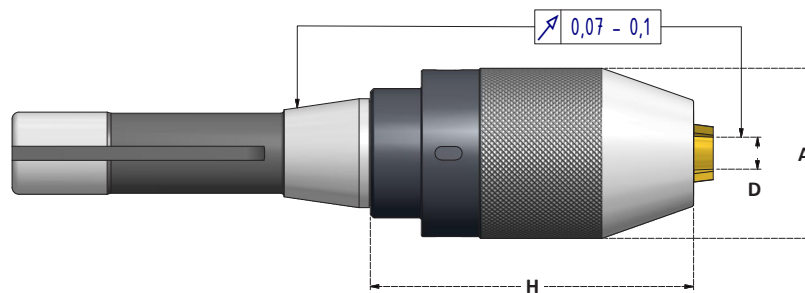
Articolo	B	D
<b>R8.B10</b>	B10	10,094
<b>R8.B12</b>	B12	12,065
<b>R8.B16</b>	B16	15,733
<b>R8.B18</b>	B18	17,780

ACCESSORI - ACCESSORIES



**MANDRINI PORTAPUNTA AUTOSERRANTI - ROTAZIONE DESTRA**

*DRILL CHUCKS - RIGHT ROTATION*



Articolo	Range D	H	A
<b>R8.H83.DCK13S</b>	1÷13	83	50,5
<b>R8.H83.DCK16S</b>	2,5÷16	83	57

**GRIFFE RIVESTITE  
IN TITANIO**

*TITANIUM  
COATED JAWS*

ACCESSORI - ACCESSORIES

