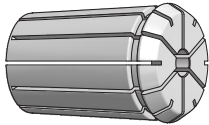


PINZE DI SERRAGGIO ER
ER CLAMPING COLLETS

DIN ISO 15488 (DIN6499)

PAG. 280



PINZE DI SERRAGGIO EOC
EOC CLAMPING COLLETS

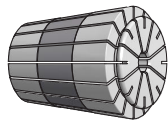
DIN ISO 10897(DIN6388)

PAG. 310



PINZE DI SERRAGGIO SKS
SKS CLAMPING COLLETS

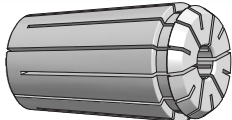
PAG. 313



PINZE DI SERRAGGIO ETS
ETS CLAMPING COLLETS

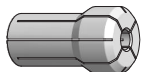
COMPATIBILE COL SISTEMA DIN ISO 15488 (DIN6499)
COMPATIBLE WITH DIN ISO 15488 (DIN6499) SYSTEM

PAG. 315



PINZE DI SERRAGGIO ETG
ETG CLAMPING COLLETS

PAG. 317



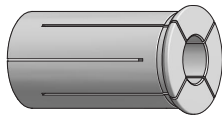
PINZE DI SERRAGGIO EDA
EDA CLAMPING COLLETS

PAG. 320



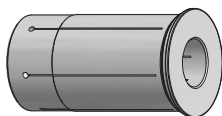
PINZE DI SERRAGGIO P8
P8 CLAMPING COLLETS

PAG. 323



PINZE DI SERRAGGIO CILINDRICHE A 4 TAGLI
CYLINDRICAL CLAMPING COLLETS WITH 4 SLOTS

PAG. 324



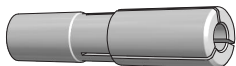
PINZE DI SERRAGGIO CILINDRICHE A 6 TAGLI
CYLINDRICAL CLAMPING COLLETS WITH 6 SLOTS

PAG. 325



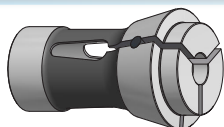
PINZE DI SERRAGGIO R8 - 369E
R8 CLAMPING COLLETS - 369E

PAG. 326



PINZE DI SERRAGGIO A CONO MORSE
MORSE TAPER CLAMPING COLLETS

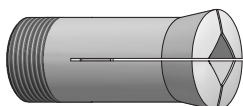
PAG. 327



PINZE DI SERRAGGIO BARRA
WORKHOLDING COLLETS

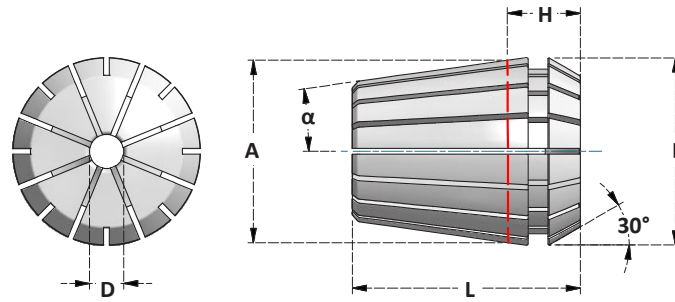
DIN 6343

PAG. 328



PINZE 3C / 3AT / 5C
3C / 3AT / 5C COLLETS

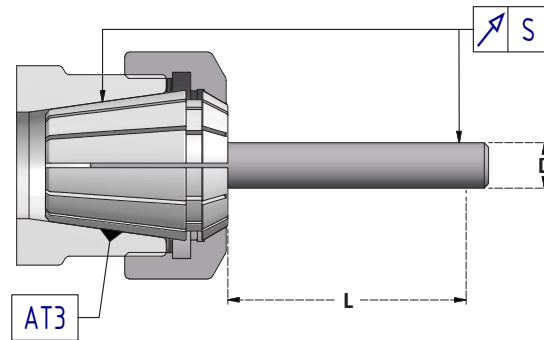
PAG. 334

PINZE DI SERRAGGIO ER
 ER CLAMPING COLLETS


Grandezza Size	A	B	α	L	H	D
8	8	8,5	8°	13,5	4,5	1-5
11	11	11,5	8°	18	6,6	1-7
12	12	12	8°	19,5	5,8	1-7
16	16	17	8°	27,5	10,6	1-10
20	20	21	8°	31,5	11,5	1-14
25	25	26	8°	34	12	1-20
32	32	33	8°	40	13	2-22
40	40	41	8°	46	15	3-30
50	50	52	8°	60	21	6-34
60	60	61	10°	60	19,6	10-40

SIGLA	PAG	TIPO	CONCENTRICITÀ RUNOUT	TENUTA SEALED	GRANDEZZE SIZES
ERC	282	PINZE STANDARD- CLASSE 1 STANDARD COLLETS - CLASS 1	$\nabla 0,008$		8- 11- 12- 16- 20- 25 32- 40- 50- 60
ERC P	286	PINZE STANDARD- CLASSE 1- ALESAGGI IN POLLICI STANDARD COLLETS - CLASS 1 - INCH SIZES	$\nabla 0,0004''$		11- 16- 20- 25 - 32- 40
ER	288	PINZE STANDARD- CLASSE 2 STANDARD COLLETS - CLASS 2	$\nabla 0,015$		16- 20- 25 - 32- 40
ERC HP	290	PINZE AD ALTA PRECISIONE HIGH PRECISION COLLETS	$\nabla 0,005$		8- 11- 16- 20- 25 - 32- 40
ERC SSC	293	PINZE A TENUTA MECCANICA SOLID SEALED COLLETS	$\nabla 0,008$	MECCANICA SOLID STEEL	16- 20- 25 - 32- 40
ERC RF	295	PINZE A TENUTA CON INSERTI IN NEOPRENE RUBBER SEALED COLLETS	$\nabla 0,008$	NEOPRENE RUBBER	11 - 16- 20- 25 - 32- 40- 50
ERC IK	298	PINZE A TENUTA CON TAGLI VULCANIZZATI RUBBER SEALED COLLETS	$\nabla 0,008$	NEOPRENE RUBBER	11 - 16- 20- 25 - 32
ERC JET	300	PINZE CON FORI DI LUBRIFICAZIONE EXTERNALLY COOLING COLLETS	$\nabla 0,008$		16- 20- 25 - 32- 40- 50
ERC M	303	PINZE PORTAMASCHI CON QUADRO TAP COLLETS WITH SQUARE	$\nabla 0,008$		16- 20- 25 - 32- 40- 50
ERC MRF	305	PINZE PORTAMASCHI CON QUADRO A TENUTA SEALED TAPPING COLLETS WITH SQUARE	$\nabla 0,008$	NEOPRENE RUBBER	16- 20- 25 - 32- 40
ERC FT	306	PINZE PORTAMASCHI CON COMPENSAZIONE ASSIALE TAPPING COLLETS WITH AXIAL COMPENSATION	$\nabla 0,008$		16- 20- 25 - 32- 40
ERC PA	308	PINZE CON OSCILLAZIONE RADIALE PER ALESATORI FLOATING COLLETS FOR REAMERS			16- 20- 25 - 32- 40

ERRORE MEDIO DI CONCENTRICITA'
AVERAGE OF RUNOUT ACCURACY



D - h6	L MAX	S MAX CLASS 1	S MAX CLASSE 2
1mm ÷ 1,6mm	6mm		
1,6mm ÷ 3mm	10mm		
3mm ÷ 7mm	16mm	≤0,01	≤0,015
7mm ÷ 10mm	25mm		
10mm ÷ 18mm	40mm		
18mm ÷ 26mm	50mm	≤0,015	≤0,02
26mm ÷ 40mm	60mm		

I valori di precisione indicati sono la media di 3 misurazioni a 120° eseguite con una spina di collaudo in tolleranza h6 del diametro nominale della pinza. La precisione va misurata ad una distanza L dalla pinza.
La precisione di concentricità influisce sulla qualità della lavorazione svolta e sulla vita dell'utensile.
La precisione di concentricità indicata è verificata serrando la pinza.

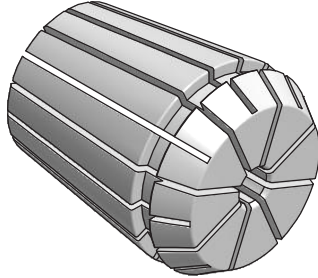
*Average of concentricity is tested each 120° at distance L and is valid only for nominal size of collet checked with a h6 pin.
Runout accuracy increases quality of work and life of tool.
For the best runout accuracy check tightening torque indicated in tab on page 349.*

CORRETTO SERRAGGIO DELL'UTENSILE
CORRECT CLAMPING OF THE TOOL

L'utensile deve essere inserito nella pinza per tutta la lunghezza di presa.
L'errato posizionamento dell'utensile riduce la precisione e la rigidità e può deformare la sede della pinza.

*Tool must be inserted for total length of collet's bore.
Wrong positioning reduces precision and may damage collet's bore.*



PINZE STANDARD
STANDARD COLLETS


Articolo		D (mm)	D (in)	CAPACITÀ DI SERRAGGIO COLLAPSE
ERC8	4004E	1-5	/	-0,5mm
ERC11	4008E	1-7	1/16- 1/4	-0,5mm
ERC12	424E	1-7	/	-0,5mm /-1,0 mm
ERC16	426E	1-10	1/16- 1/32	-0,5mm /-1,0 mm
ERC20	428E	1-14	1/16- 1/2	-0,5mm /-1,0 mm
ERC25	430E	1-20	1/16- 5/8	-0,5mm /-1,0 mm
ERC32	470E	2-22	3/32- 3/4	-0,5mm /-1,0 mm
ERC40	472E	3-30	1/8- 1"	-1,0 mm
ERC50	477E	6-34	/	-2,0 mm
ERC60	494E	10-40	/	-2,0 mm

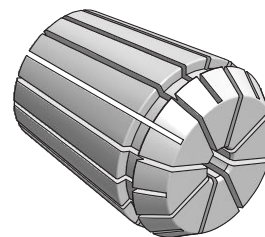
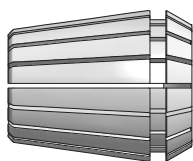
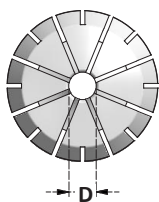
ERRORE MEDIO DI CONCENTRICITA'
 AVERAGE OF RUNOUT ACCURACY

0,008
CARATTERISTICHE:

- Tagliate in 16 settori.
- Superficie finita con rugosità' rz 1,6 .

FEATURES:

- 16 slot design.
- Surface is finished rz 1,6

PINZE STANDARD - CLASSE 1 - ALESAGGI METRICI
STANDARD COLLETS - CLASS 1 - METRIC SIZES


Articolo	Range
ERC8.D1	1 ÷ 0,5
ERC8.D1,5	1,5 ÷ 1
ERC8.D2	2 ÷ 1,5
ERC8.D2,5	2,5 ÷ 2
ERC8.D3	3 ÷ 2,5
ERC8.D3,5	3,5 ÷ 3
ERC8.D4	4 ÷ 3,5
ERC8.D4,5	4,5 ÷ 4
ERC8.D5	5 ÷ 4,5

Articolo	Range
ERC11.D1	1 ÷ 0,5
ERC11.D1,5	1,5 ÷ 1
ERC11.D2	2 ÷ 1,5
ERC11.D2,5	2,5 ÷ 2
ERC11.D3	3 ÷ 2,5
ERC11.D3,5	3,5 ÷ 3
ERC11.D4	4 ÷ 3,5
ERC11.D4,5	4,5 ÷ 4
ERC11.D5	5 ÷ 4,5
ERC11.D5,5	5,5 ÷ 6
ERC11.D6	6 ÷ 5,5
ERC11.D6,5	6,5 ÷ 6
ERC11.D7	7 ÷ 6,5

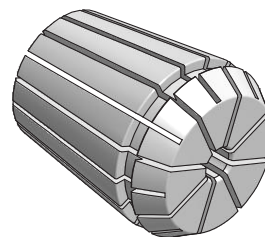
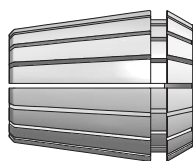
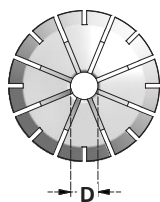
Articolo	Range
ERC12.D1	1 ÷ 0,5
ERC12.D1,5	1,5 ÷ 1
ERC12.D2	2 ÷ 1,5
ERC12.D2,5	2,5 ÷ 2
ERC12.D3	3 ÷ 2,5
ERC12.D4	4 ÷ 3,5
ERC12.D5	5 ÷ 4,5
ERC12.D6	6 ÷ 5,5
ERC12.D7	7 ÷ 6,5

Articolo	Range
ERC16.D1	1 ÷ 0,5
ERC16.D2	2 ÷ 1
ERC16.D3	3 ÷ 2
ERC16.D4	4 ÷ 3
ERC16.D5	5 ÷ 4
ERC16.D6	6 ÷ 5
ERC16.D7	7 ÷ 6
ERC16.D8	8 ÷ 7
ERC16.D9	9 ÷ 8
ERC16.D10	10 ÷ 9

Articolo	Range
ERC20.D1	1 ÷ 0,5
ERC20.D2	2 ÷ 1
ERC20.D3	3 ÷ 2
ERC20.D4	4 ÷ 3
ERC20.D5	5 ÷ 4
ERC20.D6	6 ÷ 5
ERC20.D7	7 ÷ 6
ERC20.D8	8 ÷ 7
ERC20.D9	9 ÷ 8
ERC20.D10	10 ÷ 9
ERC20.D11	11 ÷ 10
ERC20.D12	12 ÷ 11
ERC20.D13	13 ÷ 12
ERC20.D14	14 ÷ 13

Articolo	Range
ERC25.D1	1 ÷ 0,5
ERC25.D2	2 ÷ 1,5
ERC25.D3	3 ÷ 2
ERC25.D4	4 ÷ 3
ERC25.D5	5 ÷ 4
ERC25.D6	6 ÷ 5
ERC25.D7	7 ÷ 6
ERC25.D8	8 ÷ 7
ERC25.D9	9 ÷ 8
ERC25.D10	10 ÷ 9
ERC25.D11	11 ÷ 10
ERC25.D12	12 ÷ 11
ERC25.D13	13 ÷ 12
ERC25.D14	14 ÷ 13
ERC25.D15	15 ÷ 14
ERC25.D16	16 ÷ 15
ERC25.D17	17 ÷ 16
ERC25.D18	18 ÷ 17
ERC25.D19	19 ÷ 18
ERC25.D20	20 ÷ 19

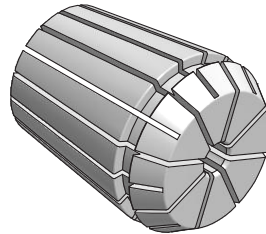
Articolo	Range
ERC32.D2	2 ÷ 1,5
ERC32.D3	3 ÷ 2
ERC32.D4	4 ÷ 3
ERC32.D5	5 ÷ 4
ERC32.D6	6 ÷ 5
ERC32.D7	7 ÷ 6
ERC32.D8	8 ÷ 7
ERC32.D9	9 ÷ 8
ERC32.D10	10 ÷ 9
ERC32.D11	11 ÷ 10
ERC32.D12	12 ÷ 11
ERC32.D13	13 ÷ 12
ERC32.D14	14 ÷ 13
ERC32.D15	15 ÷ 14
ERC32.D16	16 ÷ 15
ERC32.D17	17 ÷ 16
ERC32.D18	18 ÷ 17
ERC32.D19	19 ÷ 18
ERC32.D20	20 ÷ 19
ERC32.D21	21 ÷ 20
ERC32.D22	22 ÷ 21

PINZE STANDARD - CLASSE 1 - ALESAGGI METRICI
STANDARD COLLETS - CLASS 1 - METRIC SIZES


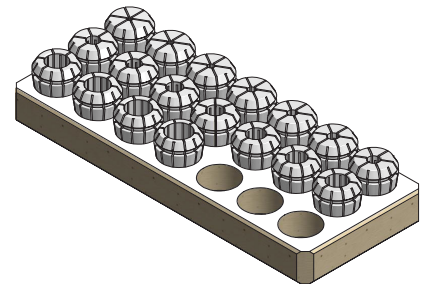
Articolo	Range
ERC40.D3	3 ÷ 2
ERC40.D4	4 ÷ 3
ERC40.D5	5 ÷ 4
ERC40.D6	6 ÷ 5
ERC40.D7	7 ÷ 6
ERC40.D8	8 ÷ 7
ERC40.D9	9 ÷ 8
ERC40.D10	10 ÷ 9
ERC40.D11	11 ÷ 10
ERC40.D12	12 ÷ 11
ERC40.D13	13 ÷ 12
ERC40.D14	14 ÷ 13
ERC40.D15	15 ÷ 14
ERC40.D16	16 ÷ 15
ERC40.D17	17 ÷ 16
ERC40.D18	18 ÷ 17
ERC40.D19	19 ÷ 18
ERC40.D20	20 ÷ 19
ERC40.D21	21 ÷ 20
ERC40.D22	22 ÷ 21
ERC40.D23	23 ÷ 22
ERC40.D24	24 ÷ 23
ERC40.D25	25 ÷ 24
ERC40.D26	26 ÷ 25
ERC40.D27	27 ÷ 26
ERC40.D28	28 ÷ 27
ERC40.D29	29 ÷ 28
ERC40.D30	30 ÷ 29

Articolo	Range
ERC50.D6	6 ÷ 5
ERC50.D7	7 ÷ 6
ERC50.D8	8 ÷ 7
ERC50.D9	9 ÷ 8
ERC50.D10	10 ÷ 9
ERC50.D11	11 ÷ 10
ERC50.D12	12 ÷ 11
ERC50.D13	13 ÷ 12
ERC50.D14	14 ÷ 13
ERC50.D15	15 ÷ 14
ERC50.D16	16 ÷ 15
ERC50.D17	17 ÷ 16
ERC50.D18	18 ÷ 17
ERC50.D19	19 ÷ 18
ERC50.D20	20 ÷ 19
ERC50.D21	21 ÷ 20
ERC50.D22	22 ÷ 21
ERC50.D23	23 ÷ 22
ERC50.D24	24 ÷ 23
ERC50.D25	25 ÷ 24
ERC50.D26	26 ÷ 25
ERC50.D27	27 ÷ 26
ERC50.D28	28 ÷ 27
ERC50.D29	29 ÷ 28
ERC50.D30	30 ÷ 29
ERC50.D31	31 ÷ 30
ERC50.D32	32 ÷ 31
ERC50.D33	33 ÷ 32
ERC50.D34	34 ÷ 33

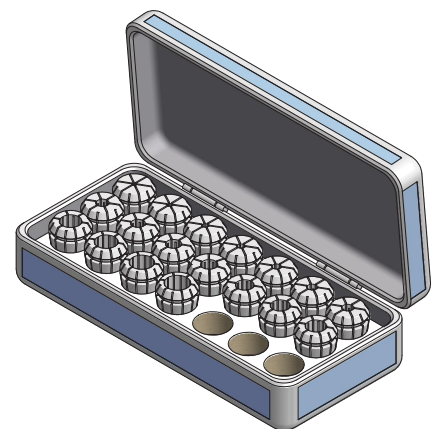
Articolo	Range
ERC60.D10	10 ÷ 9
ERC60.D11	11 ÷ 10
ERC60.D12	12 ÷ 11
ERC60.D13	13 ÷ 12
ERC60.D14	14 ÷ 13
ERC60.D15	15 ÷ 14
ERC60.D16	16 ÷ 15
ERC60.D17	17 ÷ 16
ERC60.D18	18 ÷ 17
ERC60.D19	19 ÷ 18
ERC60.D20	20 ÷ 19
ERC60.D21	21 ÷ 20
ERC60.D22	22 ÷ 21
ERC60.D23	23 ÷ 22
ERC60.D24	24 ÷ 23
ERC60.D25	25 ÷ 24
ERC60.D26	26 ÷ 25
ERC60.D27	27 ÷ 26
ERC60.D28	28 ÷ 27
ERC60.D29	29 ÷ 28
ERC60.D30	30 ÷ 29
ERC60.D31	31 ÷ 30
ERC60.D32	32 ÷ 31
ERC60.D33	33 ÷ 32
ERC60.D34	34 ÷ 33
ERC60.D35	35 ÷ 34
ERC60.D36	36 ÷ 35
ERC60.D37	37 ÷ 36
ERC60.D38	38 ÷ 37
ERC60.D39	39 ÷ 38
ERC60.D40	40 ÷ 39

PINZE STANDARD - CLASSE 1 - ALESAGGI METRICI
STANDARD COLLETS - CLASS 1 - METRIC SIZES
 **0,008**

SERIE DI PINZE SU BASE DI LEGNO
COLLETS SETS IN WOODEN TRAY

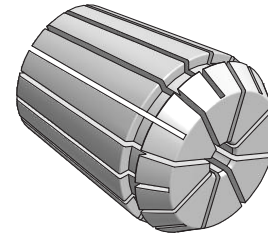
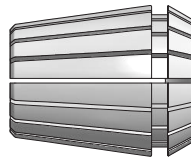
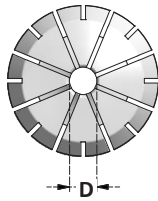
Articolo	PINZE NELLA SERIE COLLETS IN SET
TY.ERC8-9	ERC8.D1 ÷ D5 x 0,5mm
TY.ERC11-7	ERC11.D1 ÷ D7 x 1mm
TY.ERC11-13	ERC11.D1 ÷ D7 x 0,5mm
TY.ERC16-10	ERC16.D1 ÷ D10 x 1mm
TY.ERC20-12	ERC20.D2 ÷ D13 x 1mm
TY.ERC25-6	ERC25.D4-6-8-10-12-16
TY.ERC25-15	ERC25.D2 ÷ D16 x 1mm
TY.ERC32-6	ERC32.D6-8-10-12-16-20
TY.ERC32-18	ERC32.D3 ÷ D20 x 1mm
TY.ERC40-7	ERC40.D6-8-10-12-16-20-25
TY.ERC40-23	ERC40.D4 ÷ D26 x 1mm
TY.ERC40-28	ERC40.D3 ÷ D30 x 1mm
TY.ERC50-12	ERC50.D12 ÷ D34 x 2mm


SERIE DI PINZE IN BOX
COLLETS SETS IN BOX

Articolo	PINZE NELLA SERIE COLLETS IN SET
BX.ERC8-9	ERC8.D1 ÷ D5 x 0,5mm
BX.ERC11-7	ERC11.D1 ÷ D7 x 1mm
BX.ERC11-13	ERC11.D1 ÷ D7 x 0,5mm
BX.ERC16-10	ERC16.D1 ÷ D10 x 1mm
BX.ERC20-12	ERC20.D2 ÷ D13 x 1mm
BX.ERC25-15	ERC25.D2 ÷ D16 x 1mm
BX.ERC32-18	ERC32.D3 ÷ D20 x 1mm
BX.ERC40-23	ERC40.D4 ÷ D26 x 1mm
BX.ERC40-28	ERC40.D3 ÷ D30 x 1mm
BX.ERC50-12	ERC50.D12 ÷ D34 x 2mm



PINZE STANDARD - CLASSE 1 - ALESAGGI IN POLLICI
STANDARD COLLETS - CLASS 1 - INCH SIZES



Articolo	Range
ERC11.D1/32	.043 - .021
ERC11.D1/16	.062 - .043
ERC11.D3/32	.093 - .054
ERC11.D1/8	.125 - .086
ERC11.D5/32	.156 - .117
ERC11.D3/16	.187 - .148
ERC11.D7/32	.218 - .179
ERC11.D1/4	.250 - .211

Articolo	Range
ERC16.D1/16	.062 - .043
ERC16.D3/32	.093 - .054
ERC16.D1/8	.125 - .086
ERC16.D5/32	.156 - .117
ERC16.D3/16	.187 - .148
ERC16.D7/32	.218 - .179
ERC16.D1/4	.250 - .211
ERC16.D9/32	.281 - .242
ERC16.D5/16	.312 - .273
ERC16.D11/32	.343 - .304
ERC16.D3/8	.375 - .336
ERC16.D13/32	.406 - .367

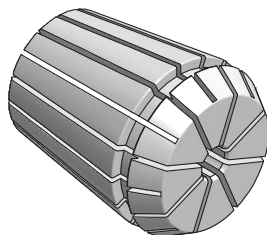
Articolo	Range
ERC20.D1/16	.062 - .043
ERC20.D3/32	.093 - .054
ERC20.D1/8	.125 - .086
ERC20.D5/32	.156 - .117
ERC20.D3/16	.187 - .148
ERC20.D7/32	.218 - .179
ERC20.D1/4	.250 - .211
ERC20.D9/32	.281 - .242
ERC20.D5/16	.312 - .273
ERC20.D11/32	.343 - .304
ERC20.D3/8	.375 - .336
ERC20.D13/32	.406 - .367
ERC20.D7/16	.437 - .398
ERC20.D15/32	.468 - .429
ERC20.D1/2	.500 - .461

Articolo	Range
ERC25.D1/16	.062 - .043
ERC25.D3/32	.093 - .054
ERC25.D1/8	.125 - .086
ERC25.D5/32	.156 - .117
ERC25.D3/16	.187 - .148
ERC25.D7/32	.218 - .179
ERC25.D1/4	.250 - .211
ERC25.D9/32	.281 - .242
ERC25.D5/16	.312 - .273
ERC25.D11/32	.343 - .304
ERC25.D3/8	.375 - .336
ERC25.D13/32	.406 - .367
ERC25.D7/16	.437 - .398
ERC25.D15/32	.468 - .429
ERC25.D1/2	.500 - .461
ERC25.D17/32	.531 - .492
ERC25.D9/16	.562 - .523
ERC25.D19/32	.593 - .554
ERC25.D5/8	.625 - .586

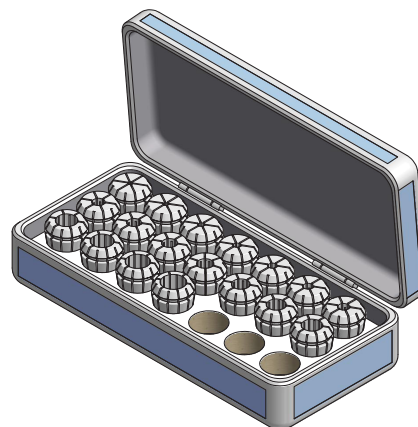
Articolo	Range
ERC32.D3/32	.093 - .054
ERC32.D1/8	.125 - .086
ERC32.D5/32	.156 - .117
ERC32.D3/16	.187 - .148
ERC32.D7/32	.218 - .179
ERC32.D1/4	.250 - .211
ERC32.D9/32	.281 - .242
ERC32.D5/16	.312 - .273
ERC32.D11/32	.343 - .304
ERC32.D3/8	.375 - .336
ERC32.D13/32	.406 - .367
ERC32.D7/16	.437 - .398
ERC32.D15/32	.468 - .429
ERC32.D1/2	.500 - .461
ERC32.D17/32	.531 - .492
ERC32.D9/16	.562 - .523
ERC32.D19/32	.593 - .554
ERC32.D5/8	.625 - .586
ERC32.D21/32	.656 - .617
ERC32.D11/16	.687 - .648
ERC32.D23/32	.718 - .679
ERC32.D3/4	.750 - .711
ERC32.D25/32	.781 - .742

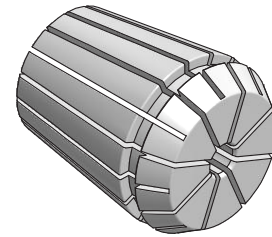
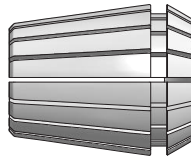
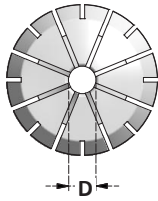
Articolo	Range
ERC40.D1/8	.125 - .086
ERC40.D5/32	.156 - .117
ERC40.D3/16	.187 - .148
ERC40.D7/32	.218 - .179
ERC40.D1/4	.250 - .211
ERC40.D9/32	.281 - .242
ERC40.D5/16	.312 - .273
ERC40.D11/32	.343 - .304
ERC40.D3/8	.375 - .336
ERC40.D13/32	.406 - .367
ERC40.D7/16	.437 - .398
ERC40.D15/32	.468 - .429
ERC40.D1/2	.500 - .461
ERC40.D17/32	.531 - .492
ERC40.D9/16	.562 - .523
ERC40.D19/32	.593 - .554
ERC40.D5/8	.625 - .586
ERC40.D21/32	.656 - .617
ERC40.D11/16	.687 - .648
ERC40.D23/32	.718 - .679
ERC40.D3/4	.750 - .711
ERC40.D25/32	.781 - .742
ERC40.D13/16	.812 - .773
ERC40.D27/32	.843 - .804
ERC40.D7/8	.875 - .836
ERC40.D29/32	.906 - .867
ERC40.D15/16	.937 - .898
ERC40.D31/32	.969 - .930
ERC40.D1"	1.000 - .961

PINZE STANDARD - CLASSE 1 - ALESAGGI IN POLLICI
STANDARD COLLETS - CLASS 1 - INCH SIZES

 0,0004"

SERIE DI PINZE IN BOX
COLLETS SETS IN BOX

Articolo	PINZE NELLA SERIE COLLETS IN SET
BX.ERC11P-7	D1/16 - D3/32 - D1/8 - D5/32 - D3/16 - D7/32 - D1/4
BX.ERC16P-7	1/8 - 3/16 - 7/32 - 1/4 - 5/16 - 11/32 - 3/8
BX.ERC20P-10	D1/8 - D3/16 - D7/32 - D1/4 - D5/16 - D11/32 - D3/8 - D13/32 - D7/16 - D1/2
BX.ERC25P-12	1/8 - 3/16 - 7/32 - 1/4 - 5/16 - 11/32 - 3/8 - 13/32 - 7/16 - 1/2 - 17/32 - 9/16
BX.ERC32P-11	D1/8 - D3/16 - D1/4 - D5/16 - D3/8 - D7/16 - D1/2 - D9/16 - D5/8 - D11/16 - D3/4
BX.ERC40P-15	D1/8 - D3/16 - D1/4 - D5/16 - D3/8 - D7/16 - D1/2 - D9/16 - D5/8 - D11/16 - D3/4 - D13/16 - D7/8 - D15/16 - D1"



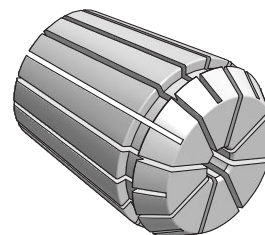
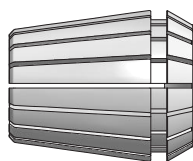
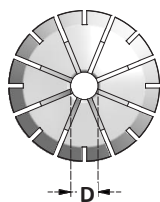
PINZE STANDARD - CLASSE 2 - ALESAGGI METRICI
STANDARD COLLETS - CLASS 2 - METRIC SIZES
↗0,015


Articolo	Range
16ER.D1	1 ÷ 0,5
16ER.D1,5	1,5 ÷ 1
16ER.D2	2 ÷ 1
16ER.D2,5	2,5 ÷ 1,5
16ER.D3	3 ÷ 2
16ER.D3,5	3,5 ÷ 2,5
16ER.D4	4 ÷ 3
16ER.D4,5	4,5 ÷ 3,5
16ER.D5	5 ÷ 4
16ER.D5,5	5,5 ÷ 4,5
16ER.D6	6 ÷ 5
16ER.D6,5	6,5 ÷ 5,5
16ER.D7	7 ÷ 6
16ER.D7,5	7,5 ÷ 6,5
16ER.D8	8 ÷ 7
16ER.D8,5	8,5 ÷ 7,5
16ER.D9	9 ÷ 8
16ER.D9,5	9,5 ÷ 8,5
16ER.D10	10 ÷ 9

Articolo	
20ER.D1	1 ÷ 0,5
20ER.D1,5	1,5 ÷ 1
20ER.D2	2 ÷ 1
20ER.D2,5	2,5 ÷ 1,5
20ER.D3	3 ÷ 2
20ER.D3,5	3,5 ÷ 2,5
20ER.D4	4 ÷ 3
20ER.D4,5	4,5 ÷ 3,5
20ER.D5	5 ÷ 4
20ER.D5,5	5,5 ÷ 4,5
20ER.D6	6 ÷ 5
20ER.D6,5	6,5 ÷ 5,5
20ER.D7	7 ÷ 6
20ER.D7,5	7,5 ÷ 6,5
20ER.D8	8 ÷ 7
20ER.D8,5	8,5 ÷ 7,5
20ER.D9	9 ÷ 8
20ER.D9,5	9,5 ÷ 8,5
20ER.D10	10 ÷ 9
20ER.D10,5	10,5 ÷ 9,5
20ER.D11	11 ÷ 10
20ER.D11,5	11,5 ÷ 10,5
20ER.D12	12 ÷ 11
20ER.D12,5	12,5 ÷ 11,5
20ER.D13	13 ÷ 12

Articolo	Range
25ER.D1	1 ÷ 0,5
25ER.D1,5	1,5 ÷ 1
25ER.D2	2 ÷ 1
25ER.D2,5	2,5 ÷ 1,5
25ER.D3	3 ÷ 2
25ER.D3,5	3,5 ÷ 2,5
25ER.D4	4 ÷ 3
25ER.D4,5	4,5 ÷ 3,5
25ER.D5	5 ÷ 4
25ER.D5,5	5,5 ÷ 4,5
25ER.D6	6 ÷ 5
25ER.D6,5	6,5 ÷ 5,5
25ER.D7	7 ÷ 6
25ER.D7,5	7,5 ÷ 6,5
25ER.D8	8 ÷ 7
25ER.D8,5	8,5 ÷ 7,5
25ER.D9	9 ÷ 8
25ER.D9,5	9,5 ÷ 8,5
25ER.D10	10 ÷ 9
25ER.D10,5	10,5 ÷ 10
25ER.D11	11 ÷ 10,5
25ER.D11,5	11,5 ÷ 11
25ER.D12	12 ÷ 11,5
25ER.D12,5	12,5 ÷ 12
25ER.D13	13 ÷ 12,5
25ER.D13,5	13,5 ÷ 13
25ER.D14	14 ÷ 13,5
25ER.D14,5	14,5 ÷ 14
25ER.D15	15 ÷ 14,5
25ER.D15,5	15,5 ÷ 15
25ER.D16	16 ÷ 15,5

Articolo	Range
32ER.D2	2 ÷ 1
32ER.D2,5	2,5 ÷ 1,5
32ER.D3	3 ÷ 2
32ER.D3,5	3,5 ÷ 2,5
32ER.D4	4 ÷ 3
32ER.D4,5	4,5 ÷ 3,5
32ER.D5	5 ÷ 4
32ER.D5,5	5,5 ÷ 4,5
32ER.D6	6 ÷ 5
32ER.D6,5	6,5 ÷ 5,5
32ER.D7	7 ÷ 6
32ER.D7,5	7,5 ÷ 6,5
32ER.D8	8 ÷ 7
32ER.D8,5	8,5 ÷ 7,5
32ER.D9	9 ÷ 8
32ER.D9,5	9,5 ÷ 8,5
32ER.D10	10 ÷ 9
32ER.D10,5	10,5 ÷ 9,5
32ER.D11	11 ÷ 10
32ER.D11,5	11,5 ÷ 10,5
32ER.D12	12 ÷ 11
32ER.D12,5	12,5 ÷ 11,5
32ER.D13	13 ÷ 12
32ER.D13,5	13,5 ÷ 12,5
32ER.D14	14 ÷ 13
32ER.D14,5	14,5 ÷ 13,5
32ER.D15	15 ÷ 14
32ER.D15,5	15,5 ÷ 14,5
32ER.D16	16 ÷ 15
32ER.D16,5	16,5 ÷ 15,5
32ER.D17	17 ÷ 16
32ER.D17,5	17,5 ÷ 16,5
32ER.D18	18 ÷ 17
32ER.D18,5	18,5 ÷ 17,5
32ER.D19	19 ÷ 18
32ER.D19,5	19,5 ÷ 18,5
32ER.D20	20 ÷ 19

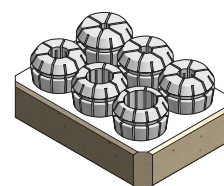
PINZE STANDARD - CLASSE 2 - ALESAGGI METRICI
STANDARD COLLETS - CLASS 2 - METRIC SIZES
 **0,015**


Articolo	Range
40ER.D3	3 ÷ 2
40ER.D3,5	3,5 ÷ 2,5
40ER.D4	4 ÷ 3
40ER.D4,5	4,5 ÷ 3,5
40ER.D5	5 ÷ 4
40ER.D5,5	5,5 ÷ 4,5
40ER.D6	6 ÷ 5
40ER.D6,5	6,5 ÷ 5,5
40ER.D7	7 ÷ 6
40ER.D7,5	7,5 ÷ 6,5
40ER.D8	8 ÷ 7
40ER.D8,5	8,5 ÷ 7,5
40ER.D9	9 ÷ 8
40ER.D9,5	9,5 ÷ 8,5
40ER.D10	10 ÷ 9
40ER.D10,5	10,5 ÷ 9,5
40ER.D11	11 ÷ 10
40ER.D11,5	11,5 ÷ 10,5
40ER.D12	12 ÷ 11
40ER.D12,5	12,5 ÷ 11,5
40ER.D13	13 ÷ 12
40ER.D13,5	13,5 ÷ 12,5
40ER.D14	14 ÷ 13
40ER.D14,5	14,5 ÷ 13,5

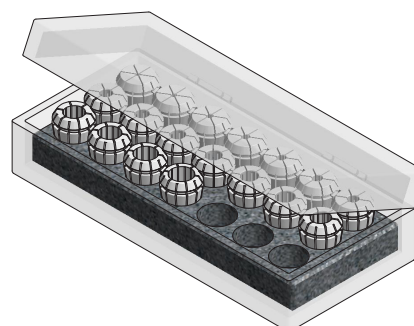
Articolo	Range
40ER.D15	15 ÷ 14
40ER.D15,5	15,5 ÷ 14,5
40ER.D16	16 ÷ 15
40ER.D16,5	16,5 ÷ 15,5
40ER.D17	17 ÷ 16
40ER.D17,5	17,5 ÷ 16,5
40ER.D18	18 ÷ 17
40ER.D18,5	18,5 ÷ 17,5
40ER.D19	19 ÷ 18
40ER.D19,5	19,5 ÷ 18,5
40ER.D20	20 ÷ 19
40ER.D20,5	20,5 ÷ 19,5
40ER.D21	21 ÷ 20
40ER.D21,5	21,5 ÷ 20,5
40ER.D22	22 ÷ 21
40ER.D22,5	22,5 ÷ 21,5
40ER.D23	23 ÷ 22
40ER.D23,5	23,5 ÷ 22,5
40ER.D24	24 ÷ 23
40ER.D24,5	24,5 ÷ 23,5
40ER.D25	25 ÷ 24
40ER.D25,5	25,5 ÷ 24,5
40ER.D26	26 ÷ 25

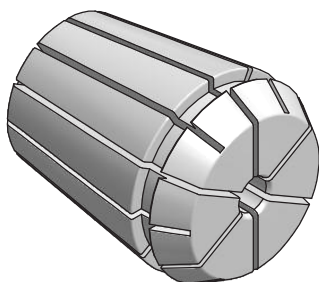
SERIE DI PINZE SU BASE DI LEGNO
COLLETS SETS IN WOODEN TRAY

Articolo	PINZE NELLA SERIE COLLETS IN SET
TY.16ER-5	16ER.D2-4-6-8-10
TY.20ER-6	20ER.D2-4-6-8-10-12
TY.25ER-6	25ER.D4-6-8-10-12-16
TY.32ER-6	32ER.D6-8-10-12-16-20
TY.40ER-7	40ER.D6-8-10-12-16-20-25


SERIE DI PINZE IN BOX
COLLETS SETS IN BOX

Articolo	PINZE NELLA SERIE COLLETS IN SET
BX.16ER-10	16ER.D1 ÷ D10 x 1mm
BX.20ER-12	20ER.D2 ÷ D13 x 1mm
BX.25ER-15	25ER.D2 ÷ D16 x 1mm
BX.32ER-18	32ER.D3 ÷ D20 x 1mm
BX.40ER-23	40ER.D4 ÷ D26 x 1mm



PINZE DI ALTA PRECISIONE
HIGH PRECISION COLLETS


Articolo		D (mm)	CAPACITÀ DI SERRAGGIO COLLAPSE
ERC8HP	4004E	1-5	-0,5mm
ERC11HP	4008E	1-7	-0,5mm
ERC16HP	426E	1-10	-0,5mm
ERC20HP	428E	1-13	-0,5mm
ERC25HP	430E	1-16	-0,5mm
ERC32HP	470E	2-20	-0,5mm
ERC40HP	472E	3-26	-0,5mm

ERRORE MEDIO DI CONCENTRICITA'
AVERAGE OF RUNOUT ACCURACY

0,005

Caratteristiche:

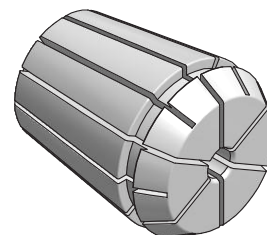
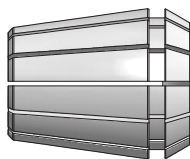
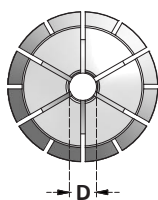
- Tagliate in 12 settori per garantire un'ottima ripetibilità di concentricità.
- **La precisione HP è garantita solo serrando l'utensile di diametro nominale.**
- Superficie finita con rugosità Rz 1,6.

Features:

- 12 slots design for the highest precision and repeatability.
- **HP precision is guaranteed only using tools with nominal size.**
- Surface finished Rz 1,6.

PINZE DI ALTA PRECISIONE
HIGH PRECISION COLLETS

↗ 0,005



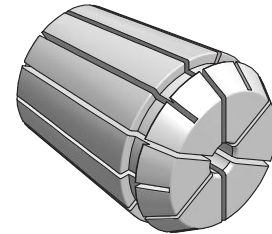
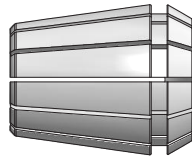
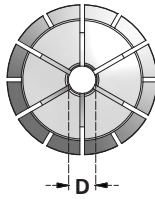
Articolo
ERC8HP.D1
ERC8HP.D1,5
ERC8HP.D2
ERC8HP.D2,5
ERC8HP.D3
ERC8HP.D3,5
ERC8HP.D4
ERC8HP.D4,5
ERC8HP.D5

Articolo
ERC11HP.D1
ERC11HP.D1,5
ERC11HP.D2
ERC11HP.D2,5
ERC11HP.D3
ERC11HP.D3,5
ERC11HP.D4
ERC11HP.D4,5
ERC11HP.D5
ERC11HP.D5,5
ERC11HP.D6
ERC11HP.D6,5
ERC11HP.D7

Articolo
ERC16HP.D1
ERC16HP.D1,5
ERC16HP.D2
ERC16HP.D2,5
ERC16HP.D3
ERC16HP.D3,5
ERC16HP.D4
ERC16HP.D4,5
ERC16HP.D5
ERC16HP.D5,5
ERC16HP.D6
ERC16HP.D6,5
ERC16HP.D7
ERC16HP.D7,5
ERC16HP.D8
ERC16HP.D8,5
ERC16HP.D9
ERC16HP.D9,5
ERC16HP.D10

Articolo
ERC20HP.D1
ERC20HP.D1,5
ERC20HP.D2
ERC20HP.D2,5
ERC20HP.D3
ERC20HP.D3,5
ERC20HP.D4
ERC20HP.D4,5
ERC20HP.D5
ERC20HP.D5,5
ERC20HP.D6
ERC20HP.D6,5
ERC20HP.D7
ERC20HP.D7,5
ERC20HP.D8
ERC20HP.D8,5
ERC20HP.D9
ERC20HP.D9,5
ERC20HP.D10
ERC20HP.D10,5
ERC20HP.D11
ERC20HP.D11,5
ERC20HP.D12
ERC20HP.D12,5
ERC20HP.D13

Articolo
ERC25HP.D1
ERC25HP.D1,5
ERC25HP.D2
ERC25HP.D2,5
ERC25HP.D3
ERC25HP.D3,5
ERC25HP.D4
ERC25HP.D4,5
ERC25HP.D5
ERC25HP.D5,5
ERC25HP.D6
ERC25HP.D6,5
ERC25HP.D7
ERC25HP.D7,5
ERC25HP.D8
ERC25HP.D8,5
ERC25HP.D9
ERC25HP.D9,5
ERC25HP.D10
ERC25HP.D10,5
ERC25HP.D11
ERC25HP.D11,5
ERC25HP.D12
ERC25HP.D12,5
ERC25HP.D13
ERC25HP.D13,5
ERC25HP.D14
ERC25HP.D14,5
ERC25HP.D15
ERC25HP.D15,5
ERC25HP.D16

PINZE DI ALTA PRECISIONE
HIGH PRECISION COLLETS
 **0,005**


Articolo
ERC32HP.D2
ERC32HP.D2,5
ERC32HP.D3
ERC32HP.D3,5
ERC32HP.D4
ERC32HP.D4,5
ERC32HP.D5
ERC32HP.D5,5
ERC32HP.D6
ERC32HP.D6,5
ERC32HP.D7
ERC32HP.D7,5
ERC32HP.D8
ERC32HP.D8,5
ERC32HP.D9
ERC32HP.D9,5
ERC32HP.D10
ERC32HP.D10,5
ERC32HP.D11
ERC32HP.D11,5

Articolo
ERC32HP.D12
ERC32HP.D12,5
ERC32HP.D13
ERC32HP.D13,5
ERC32HP.D14
ERC32HP.D14,5
ERC32HP.D15
ERC32HP.D15,5
ERC32HP.D16
ERC32HP.D16,5
ERC32HP.D17
ERC32HP.D17,5
ERC32HP.D18
ERC32HP.D18,5
ERC32HP.D19
ERC32HP.D19,5
ERC32HP.D20

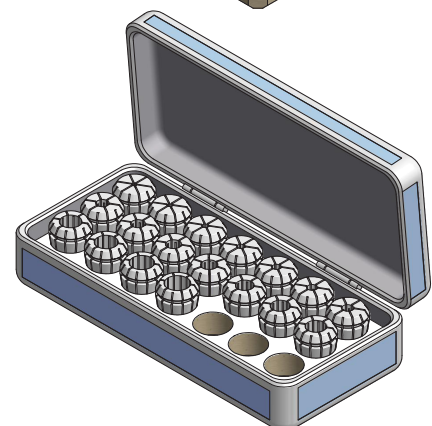
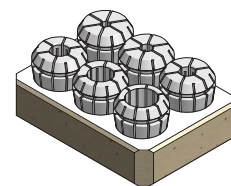
Articolo
ERC40HP.D3
ERC40HP.D4
ERC40HP.D5
ERC40HP.D6
ERC40HP.D7
ERC40HP.D8
ERC40HP.D9
ERC40HP.D10
ERC40HP.D11
ERC40HP.D12
ERC40HP.D13
ERC40HP.D14
ERC40HP.D15
ERC40HP.D16
ERC40HP.D17
ERC40HP.D18
ERC40HP.D19
ERC40HP.D20
ERC40HP.D21
ERC40HP.D22
ERC40HP.D23
ERC40HP.D24
ERC40HP.D25
ERC40HP.D26

SERIE DI PINZE SU BASE DI LEGNO
COLLETS SETS IN WOODEN TRAY

Articolo	PINZE NELLA SERIE COLLETS IN SET
TY.ERC11HP-7	ERC11HP.D1 ÷ D7 x 1mm
TY.ERC16HP-5	ERC16HP.D2- D4- D6- D8- D10
TY.ERC20HP-6	ERC20HP.D2- D4- D6- D8- D10- D12
TY.ERC25HP-6	ERC25HP.D4-6-8-10-12-16
TY.ERC32HP-6	ERC32HP.D6-8-10-12-16-20
TY.ERC40HP-7	ERC40HP.D6-8-10-12-16-20-25

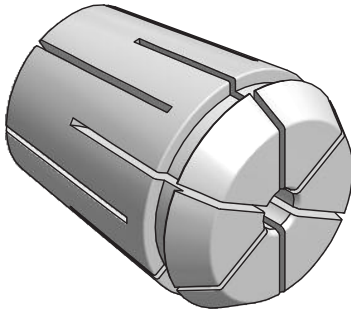
SERIE DI PINZE IN BOX
COLLETS SETS IN BOX

Articolo	PINZE NELLA SERIE COLLETS IN SET
BX.ERC8HP-9	ERC8HP.D1 ÷ D5 x 0,5mm
BX.ERC11HP-13	ERC11HP.D1 ÷ D7 x 0,5mm
BX.ERC16HP-10	ERC16HP.D1 ÷ D10 x 1mm
BX.ERC20HP-12	ERC20HP.D2 ÷ D13 x 1mm
BX.ERC25HP-15	ERC25HP.D2 ÷ D16 x 1mm
BX.ERC32HP-18	ERC32HP.D3 ÷ D20 x 1mm
BX.ERC40HP-23	ERC40HP.D4 ÷ D26 x 1mm



PINZE A TENUTA MECCANICA

SOLID SEALED COLLETS



Articolo	D (mm)	Capacità di serraggio Collapse
ERC16SSC	1-12	-0,1mm
ERC20SSC	3-14	-0,1mm
ERC25SSC	3-16	-0,1mm
ERC32SSC	3-22	-0,1mm
ERC40SSC	3-30	-0,1mm

ERRORE MEDIO DI CONCENTRICITA'
AVERAGE OF RUNOUT ACCURACY

0,008

PRESSIONE MASSIMA AMMESSA
MAX PRESSURE

**MAX
120bar**

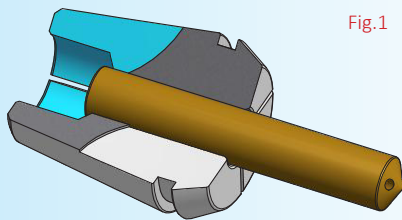


Fig.1

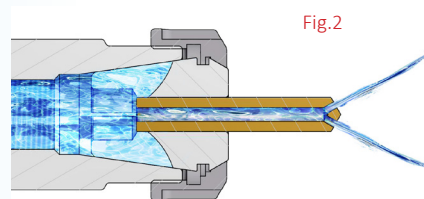


Fig.2

- La tenuta del liquido refrigerante è garantita dai tagli corti (Fig.1).
- Il refrigerante passa attraverso i fori di lubrificazione dell'utensile (Fig.2). Uscendo dai taglienti raffredda ed evacua i trucioli di lavorazione.
- La pressione massima ammessa è di 120 bar.
- Si raccomanda di impostare una pressione di esercizio proporzionale al diametro.
- Sono tagliate in 4+4 settori che garantiscono un'ottima rigidità e una elevata precisione di concentricità.
- **La tenuta è garantita solo per utensili con gambo uguale al diametro nominale della pinza e inseriti per tutta la sua lunghezza di presa.** (Fig.1 - Fig.3).

- *Collets ERC-SSC are mechanical sealed by short rear slots (Fig.1).*
- *Coolant flows through cutting tool and remove chips (Fig.2).*
- *Coolant pressure up to 120 bar.*
- *4+4 slots design allows a better runout accuracy and repeatability.*
- *Sealing is guaranteed only for tools with nominal diameter of collet inserted for total length of bore.* (Fig.1 - Fig.3).

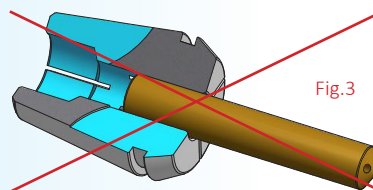


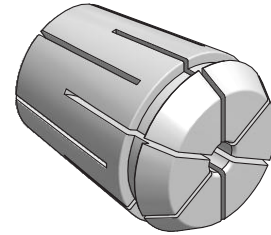
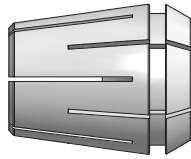
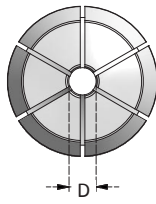
Fig.3

PINZE A TENUTA MECCANICA

SOLID SEALED COLLETS

MAX
120bar

↗ **0,008**



Articolo
ERC16SSC.D1
ERC16SSC.D2
ERC16SSC.D3
ERC16SSC.D4
ERC16SSC.D5
ERC16SSC.D6
ERC16SSC.D7
ERC16SSC.D8
ERC16SSC.D9
ERC16SSC.D10
ERC16SSC.D11
ERC16SSC.D12

Articolo
ERC20SSC.D3
ERC20SSC.D4
ERC20SSC.D5
ERC20SSC.D6
ERC20SSC.D7
ERC20SSC.D8
ERC20SSC.D9
ERC20SSC.D10
ERC20SSC.D11
ERC20SSC.D12
ERC20SSC.D13
ERC20SSC.D14

Articolo
ERC25SSC.D3
ERC25SSC.D4
ERC25SSC.D5
ERC25SSC.D6
ERC25SSC.D7
ERC25SSC.D8
ERC25SSC.D9
ERC25SSC.D10
ERC25SSC.D11
ERC25SSC.D12
ERC25SSC.D13
ERC25SSC.D14
ERC25SSC.D15
ERC25SSC.D16

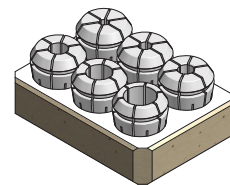
Articolo
ERC32SSC.D3
ERC32SSC.D4
ERC32SSC.D5
ERC32SSC.D6
ERC32SSC.D7
ERC32SSC.D8
ERC32SSC.D9
ERC32SSC.D10
ERC32SSC.D11
ERC32SSC.D12
ERC32SSC.D13
ERC32SSC.D14
ERC32SSC.D15
ERC32SSC.D16
ERC32SSC.D17
ERC32SSC.D18
ERC32SSC.D19
ERC32SSC.D20
ERC32SSC.D21
ERC32SSC.D22

Articolo
ERC40SSC.D3
ERC40SSC.D4
ERC40SSC.D5
ERC40SSC.D6
ERC40SSC.D7
ERC40SSC.D8
ERC40SSC.D9
ERC40SSC.D10
ERC40SSC.D11
ERC40SSC.D12
ERC40SSC.D13
ERC40SSC.D14
ERC40SSC.D15
ERC40SSC.D16
ERC40SSC.D17
ERC40SSC.D18
ERC40SSC.D19
ERC40SSC.D20
ERC40SSC.D21
ERC40SSC.D22
ERC40SSC.D23
ERC40SSC.D24
ERC40SSC.D25
ERC40SSC.D26
ERC40SSC.D30

SERIE DI PINZE SU BASE DI LEGNO

COLLETS SETS IN WOODEN TRAY

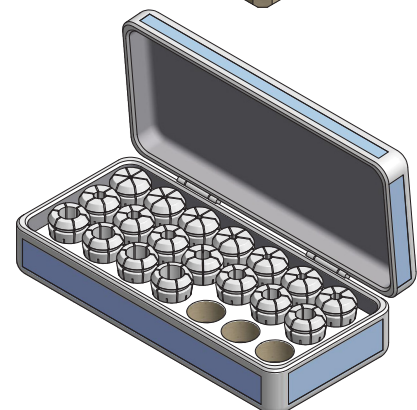
Articolo	PINZE NELLA SERIE COLLETS IN SET
TY.ERC25SSC-6	ERC25SSC.D4-6-8-10-12-16
TY.ERC32SSC-6	ERC32SSC.D6-8-10-12-16-20
TY.ERC40SSC-7	ERC40SSC.D6-8-10-12-16-20-25

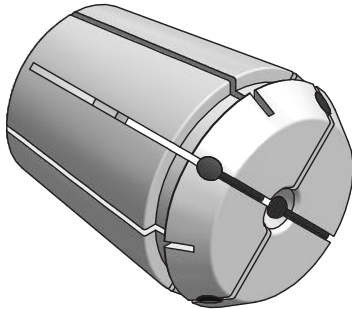


SERIE DI PINZE IN BOX

COLLETS SETS IN BOX

Articolo	PINZE NELLA SERIE COLLETS IN SET
BX.ERC16SSC-8	ERC16SSC.D3+10 x 1mm
BX.ERC20SSC-12	ERC20SSC.D3+14 x 1mm
BX.ERC25SSC-14	ERC25SSC.D3+16 x 1mm
BX.ERC32SSC-18	ERC32SSC.D3+20 x 1mm
BX.ERC40SSC-23	ERC40SSC.D4+26 x 1mm



PINZE A TENUTA CON INSERTI IN NEOPRENE
RUBBER SEALED COLLETS


Articolo	D (mm)	Capacità di serraggio Collapse
ERC11RF	3 ÷ 7	-0,1mm
ERC16RF	3 ÷ 10	-0,1mm
ERC20RF	3 ÷ 13	-0,1mm
ERC25RF	3 ÷ 16	-0,1mm
ERC32RF	3 ÷ 20	-0,1mm
ERC40RF	4 ÷ 26	-0,1mm
ERC50RF	10 ÷ 34	-0,1mm

ERRORE MEDIO DI CONCENTRICITA'
 AVERAGE OF RUNOUT ACCURACY

0,008
PRESSIONE MASSIMA AMMESSA
 MAX PRESSURE

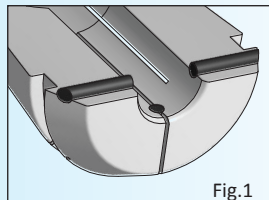
**MAX
25 bar**


Fig.1

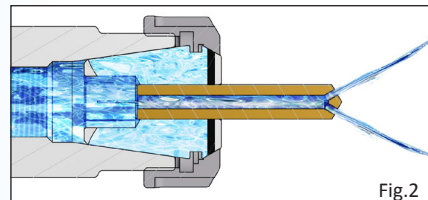


Fig.2

- La tenuta del liquido refrigerante è garantita dalle guarnizioni in neoprene inserite nel cono a 30° (Fig.1).
- Il refrigerante passa attraverso i fori di lubrificazione dell'utensile (Fig.2). Uscendo dai taglienti raffredda ed evacua i trucioli di lavorazione.
- La pressione massima ammessa è di 25 bar. Si raccomanda di impostare una pressione di esercizio proporzionale al diametro.
- Sono tagliate in 4+4 settori che garantiscono un'ottima rigidità e una elevata precisione di concentricità.
- **La tenuta è garantita solo per utensili con gambo uguale al diametro nominale della pinza e inseriti per tutta la sua lunghezza di presa.**
- Le frese con piano tipo weldon possono essere utilizzate solo se posizionate in modo che il piano resti al di sotto dei gommini per non favorire l'uscita del liquido (Fig.3).
- *Collets ERC-RF are sealed by neoprene inserts in 30° taper (Fig.1)*
- *Coolant flows through cutting tool and remove chips (Fig.2).*
- *Coolant pressure up to 25 bar*
- *4+4 slots design allows a better runout accuracy and repeatability.*
- ***Sealing is guaranteed only for tools with nominal diameter of collet inserted for total length of bore.***
- *If tool has a flat it must be located under neoprene seals (Fig.3).*

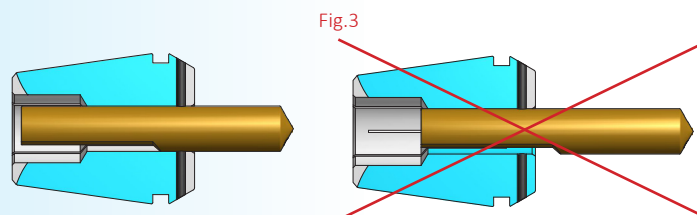


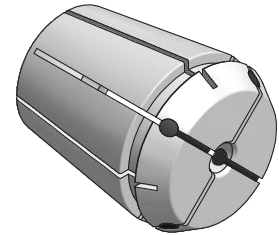
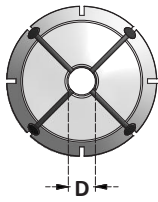
Fig.3

PINZE A TENUTA CON INSERTI IN NEOPRENE

RUBBER SEALED COLLETS

MAX
25 bar

↗ 0,008



Articolo
ERC11RF.D3
ERC11RF.D3,5
ERC11RF.D4
ERC11RF.D4,5
ERC11RF.D5
ERC11RF.D5,5
ERC11RF.D6
ERC11RF.D6,5
ERC11RF.D7

Articolo
ERC16RF.D3
ERC16RF.D3,5
ERC16RF.D4
ERC16RF.D4,5
ERC16RF.D5
ERC16RF.D5,5
ERC16RF.D6
ERC16RF.D6,5
ERC16RF.D7
ERC16RF.D7,5
ERC16RF.D8
ERC16RF.D8,5
ERC16RF.D9
ERC16RF.D9,5
ERC16RF.D10

Articolo
ERC20RF.D3
ERC20RF.D3,5
ERC20RF.D4
ERC20RF.D4,5
ERC20RF.D5
ERC20RF.D5,5
ERC20RF.D6
ERC20RF.D6,5
ERC20RF.D7
ERC20RF.D7,5
ERC20RF.D8
ERC20RF.D8,5
ERC20RF.D9
ERC20RF.D9,5
ERC20RF.D10
ERC20RF.D10,5
ERC20RF.D11
ERC20RF.D11,5
ERC20RF.D12
ERC20RF.D12,5
ERC20RF.D13

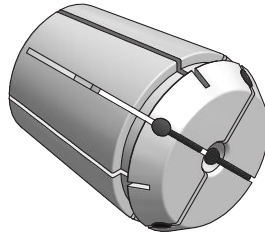
Articolo
ERC25RF.D3
ERC25RF.D3,5
ERC25RF.D4
ERC25RF.D4,5
ERC25RF.D5
ERC25RF.D5,5
ERC25RF.D6
ERC25RF.D6,5
ERC25RF.D7
ERC25RF.D7,5
ERC25RF.D8
ERC25RF.D8,5
ERC25RF.D9
ERC25RF.D9,5
ERC25RF.D10
ERC25RF.D10,5
ERC25RF.D11
ERC25RF.D11,5
ERC25RF.D12
ERC25RF.D12,5
ERC25RF.D13
ERC25RF.D13,5
ERC25RF.D14
ERC25RF.D14,5
ERC25RF.D15
ERC25RF.D15,5
ERC25RF.D16

Articolo
ERC32RF.D3
ERC32RF.D3,5
ERC32RF.D4
ERC32RF.D4,5
ERC32RF.D5
ERC32RF.D5,5
ERC32RF.D6
ERC32RF.D6,5
ERC32RF.D7
ERC32RF.D7,5
ERC32RF.D8
ERC32RF.D8,5
ERC32RF.D9
ERC32RF.D9,5
ERC32RF.D10
ERC32RF.D10,5
ERC32RF.D11
ERC32RF.D11,5
ERC32RF.D12
ERC32RF.D12,5
ERC32RF.D13
ERC32RF.D13,5
ERC32RF.D14
ERC32RF.D14,5
ERC32RF.D15
ERC32RF.D15,5
ERC32RF.D16
ERC32RF.D16,5
ERC32RF.D17
ERC32RF.D17,5
ERC32RF.D18
ERC32RF.D18,5
ERC32RF.D19
ERC32RF.D19,5
ERC32RF.D20

PINZE A TENUTA CON INSERTI IN NEOPRENE
RUBBER SEALED COLLETS

 MAX
25 bar

↗ 0,008



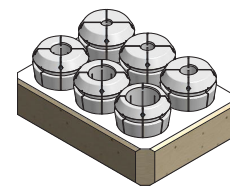
Articolo
ERC40RF.D4
ERC40RF.D4,5
ERC40RF.D5
ERC40RF.D5,5
ERC40RF.D6
ERC40RF.D6,5
ERC40RF.D7
ERC40RF.D7,5
ERC40RF.D8
ERC40RF.D8,5
ERC40RF.D9
ERC40RF.D9,5
ERC40RF.D10
ERC40RF.D10,5
ERC40RF.D11
ERC40RF.D11,5
ERC40RF.D12
ERC40RF.D12,5
ERC40RF.D13
ERC40RF.D13,5
ERC40RF.D14
ERC40RF.D14,5

Articolo
ERC40RF.D15
ERC40RF.D15,5
ERC40RF.D16
ERC40RF.D16,5
ERC40RF.D17
ERC40RF.D17,5
ERC40RF.D18
ERC40RF.D18,5
ERC40RF.D19
ERC40RF.D19,5
ERC40RF.D20
ERC40RF.D20,5
ERC40RF.D21
ERC40RF.D21,5
ERC40RF.D22
ERC40RF.D22,5
ERC40RF.D23
ERC40RF.D23,5
ERC40RF.D24
ERC40RF.D24,5
ERC40RF.D25
ERC40RF.D25,5
ERC40RF.D26

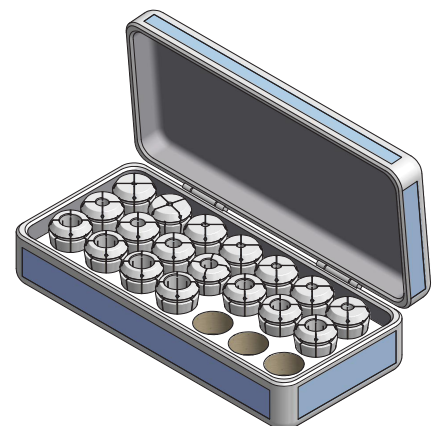
Articolo
ERC50RF.D10
ERC50RF.D12
ERC50RF.D14
ERC50RF.D16
ERC50RF.D18
ERC50RF.D20
ERC50RF.D22
ERC50RF.D24
ERC50RF.D25
ERC50RF.D26
ERC50RF.D28
ERC50RF.D30
ERC50RF.D32
ERC50RF.D34

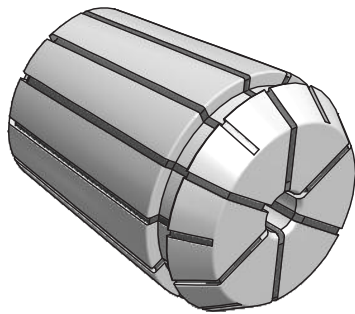
SERIE DI PINZE SU BASE DI LEGNO
COLLETS SETS IN WOODEN TRAY

Articolo	PINZE NELLA SERIE COLLETS IN SET
TY.ERC25RF-6	ERC25RF.D4-6-8-10-12-16
TY.ERC32RF-6	ERC32RF.D6-8-10-12-16-20
TY.ERC40RF-7	ERC40RF.D6-8-10-12-16-20-25


SERIE DI PINZE IN BOX
COLLETS SETS IN BOX

Articolo	PINZE NELLA SERIE COLLETS IN SET
BX.ERC11RF-9	ERC11RF.D3÷7 x 0,5mm
BX.ERC16RF-8	ERC16RF.D3÷10 x 1mm
BX.ERC20RF-11	ERC20RF.D3÷13 x 1mm
BX.ERC25RF-14	ERC25RF.D3÷16 x 1mm
BX.ERC32RF-18	ERC32RF.D3÷20 x 1mm
BX.ERC40RF-23	ERC40RF.D4÷26 x 1mm
BX.ERC50RF-12	ERC50RF.D12÷34 x 2mm



PINZE A TENUTA CON TAGLI VULCANIZZATI
COLLETS SEALED ALONG THE SLOTS


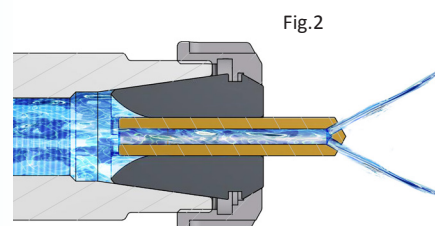
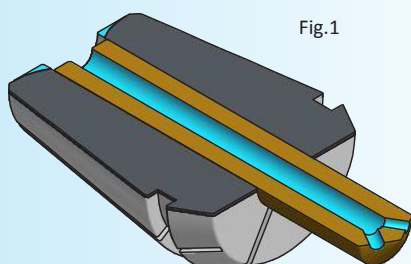
Articolo	D (mm)	Capacità di serraggio Collapse
ERC11IK	3 ÷ 7	-0,1mm
ERC16IK	3 ÷ 10	-0,1mm
ERC20IK	3 ÷ 13	-0,1mm
ERC25IK	3 ÷ 16	-0,1mm
ERC32IK	3 ÷ 20	-0,1mm

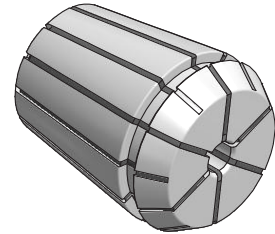
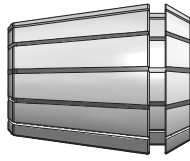
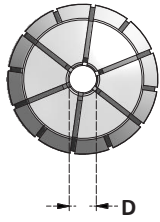
ERRORE MEDIO DI CONCENTRICITA'
 AVERAGE OF RUNOUT ACCURACY

0,008
PRESSIONE MASSIMA AMMESSA
 MAX PRESSURE

MAX
25 bar

- La tenuta del liquido refrigerante è garantita dai tagli vulcanizzati con il neoprene (Fig.1).
- Il refrigerante passa attraverso i fori di lubrificazione dell'utensile (Fig.2). Uscendo sui taglienti, raffredda ed evacua i trucioli di lavorazione.
- La pressione massima ammessa è di 25 bar.
- Si raccomanda di impostare una pressione di esercizio proporzionale al diametro.
- **La tenuta è garantita solo per utensili con gambo uguale al diametro nominale della pinza e inseriti per tutta la sua lunghezza di presa.**
- *Collets ERC-IK are sealed by rubber inserts along slots (Fig.1).*
- *Coolant flows through cutting tool and remove chips (Fig.2).*
- *Coolant pressure up to 25 bar*
- *Sealing is guaranteed only for tools with nominal diameter of collet inserted for total length of bore.*



PINZE A TENUTA CON TAGLI VULCANIZZATI
COLLETS SEALED ALONG THE SLOTS
**MAX
25 bar**
0,008


Articolo
ERC11IK.D3
ERC11IK.D3,5
ERC11IK.D4
ERC11IK.D4,5
ERC11IK.D5
ERC11IK.D5,5
ERC11IK.D6
ERC11IK.D6,5
ERC11IK.D7

Articolo
ERC16IK.D3
ERC16IK.D4
ERC16IK.D5
ERC16IK.D6
ERC16IK.D7
ERC16IK.D8
ERC16IK.D9
ERC16IK.D10

Articolo
ERC20IK.D3
ERC20IK.D4
ERC20IK.D5
ERC20IK.D6
ERC20IK.D7
ERC20IK.D8
ERC20IK.D9
ERC20IK.D10
ERC20IK.D11
ERC20IK.D12
ERC20IK.D13

Articolo
ERC25IK.D3
ERC25IK.D4
ERC25IK.D5
ERC25IK.D6
ERC25IK.D7
ERC25IK.D8
ERC25IK.D9
ERC25IK.D10
ERC25IK.D11
ERC25IK.D12
ERC25IK.D13
ERC25IK.D14
ERC25IK.D15
ERC25IK.D16

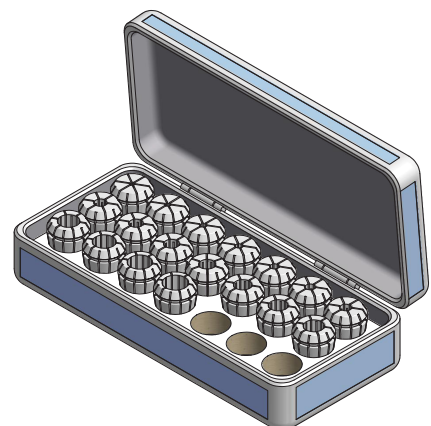
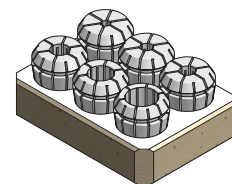
Articolo
ERC32IK.D3
ERC32IK.D4
ERC32IK.D5
ERC32IK.D6
ERC32IK.D7
ERC32IK.D8
ERC32IK.D9
ERC32IK.D10
ERC32IK.D11
ERC32IK.D12
ERC32IK.D13
ERC32IK.D14
ERC32IK.D15
ERC32IK.D16
ERC32IK.D17
ERC32IK.D18
ERC32IK.D19
ERC32IK.D20

SERIE DI PINZE SU BASE DI LEGNO
COLLETS SETS IN WOODEN TRAY

Articolo	PINZE NELLA SERIE COLLETS IN SET
TY.ERC25IK-6	ERC25IK.D4-6-8-10-12-16
TY.ERC32IK-6	ERC32IK.D6-8-10-12-16-20

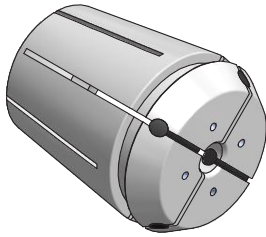
SERIE DI PINZE IN BOX
COLLETS SETS IN BOX

Articolo	PINZE NELLA SERIE COLLETS IN SET
BX.ERC11IK-9	ERC11IK.D3÷7 x 0,5mm
BX.ERC16IK-8	ERC16IK.D3÷10 x 1mm
BX.ERC20IK-11	ERC20IK.D3÷13 x 1mm
BX.ERC25IK-14	ERC25IK.D3÷16 x 1mm
BX.ERC32IK-18	ERC32IK.D3÷20 x 1mm



PINZE CON FORI DI LUBRIFICAZIONE

EXTERNALLY COOLED COLLETS



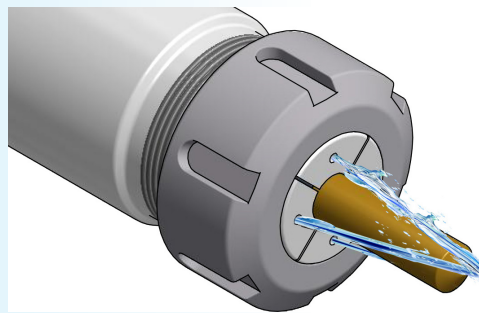
Articolo	D (mm)	Capacità di serraggio Collapse
ERC16JET	3 ÷ 7	-0,1mm
ERC20JET	3 ÷ 11	-0,1mm
ERC25JET	3 ÷ 14	-0,1mm
ERC32JET	3 ÷ 20	-0,1mm
ERC40JET	4 ÷ 26	-0,1mm
ERC50JET	6 ÷ 34	-0,1mm

ERRORE MEDIO DI CONCENTRICITA'
AVERAGE OF RUNOUT ACCURACY

0,008

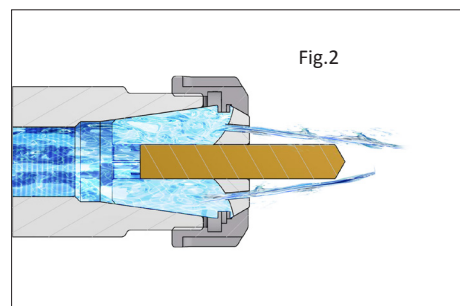
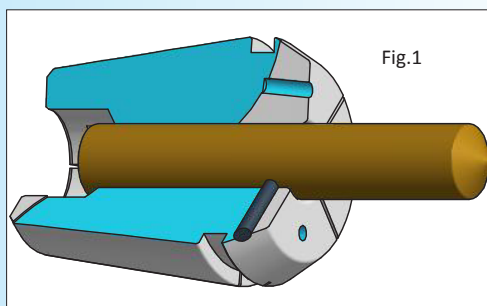
PRESSIONE MASSIMA AMMESSA
MAX PRESSURE

**MAX
25 bar**



- La tenuta del liquido refrigerante è garantita dalle guarnizioni in neoprene inserite nel cono a 30° (Fig.1).
- Il refrigerante passa attraverso i 4 fori frontali della pinza (Fig.2).
- Il getto è indirizzato sui taglienti, raffredda ed evacua i trucioli di lavorazione.
- La pressione massima ammessa è di 25 bar.
- Si raccomanda di impostare una pressione di esercizio proporzionale al diametro.
- Sono tagliate in 4+4 settori che garantiscono un'ottima rigidità e una elevata precisione di concentricità.
- **La tenuta è garantita solo per gli utensili il cui gambo corrisponde al diametro nominale della pinza e che vengono inseriti per tutta la sua lunghezza di presa.**

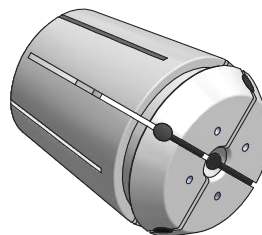
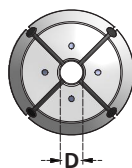
- *Collets are sealed by neoprene inserts in the 30° taper (Fig.1).*
- *4 holes of ERC JET collets direct coolant flow to centre of cutting edges. Chips are easy removed (Fig.2).*
- *Coolant pressure up to 25 bar.*
- *4+4 slots design allows a better runout accuracy and repeatability.*
- ***Sealing is guaranteed only for tools with nominal diameter of collet inserted on total length of bore.***



PINZE CON FORI DI LUBRIFICAZIONE
EXTERNALLY COOLED COLLETS

MAX
25 bar

↗ 0,008



Articolo
ERC16JET.D3
ERC16JET.D4
ERC16JET.D5
ERC16JET.D6
ERC16JET.D7

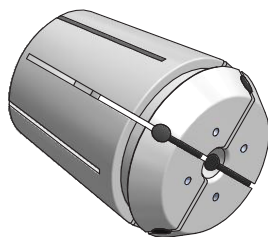
Articolo
ERC20JET.D3
ERC20JET.D4
ERC20JET.D5
ERC20JET.D6
ERC20JET.D7
ERC20JET.D8
ERC20JET.D9
ERC20JET.D10

Articolo
ERC25JET.D3
ERC25JET.D4
ERC25JET.D5
ERC25JET.D6
ERC25JET.D7
ERC25JET.D8
ERC25JET.D9
ERC25JET.D10
ERC25JET.D11
ERC25JET.D12
ERC25JET.D13
ERC25JET.D14

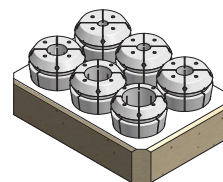
Articolo
ERC32JET.D3
ERC32JET.D4
ERC32JET.D5
ERC32JET.D6
ERC32JET.D7
ERC32JET.D8
ERC32JET.D9
ERC32JET.D10
ERC32JET.D11
ERC32JET.D12
ERC32JET.D13
ERC32JET.D14
ERC32JET.D15
ERC32JET.D16
ERC32JET.D17
ERC32JET.D18
ERC32JET.D19
ERC32JET.D20

Articolo
ERC40JET.D4
ERC40JET.D5
ERC40JET.D6
ERC40JET.D7
ERC40JET.D8
ERC40JET.D9
ERC40JET.D10
ERC40JET.D11
ERC40JET.D12
ERC40JET.D13
ERC40JET.D14
ERC40JET.D15
ERC40JET.D16
ERC40JET.D17
ERC40JET.D18
ERC40JET.D19
ERC40JET.D20
ERC40JET.D21
ERC40JET.D22
ERC40JET.D23
ERC40JET.D24
ERC40JET.D25
ERC40JET.D26

Articolo
ERC50JET.D6
ERC50JET.D7
ERC50JET.D8
ERC50JET.D9
ERC50JET.D10
ERC50JET.D11
ERC50JET.D12
ERC50JET.D13
ERC50JET.D14
ERC50JET.D15
ERC50JET.D16
ERC50JET.D17
ERC50JET.D18
ERC50JET.D19
ERC50JET.D20
ERC50JET.D21
ERC50JET.D22
ERC50JET.D23
ERC50JET.D24
ERC50JET.D25
ERC50JET.D26
ERC50JET.D27
ERC50JET.D28
ERC50JET.D29
ERC50JET.D30
ERC50JET.D31
ERC50JET.D32
ERC50JET.D33
ERC50JET.D34

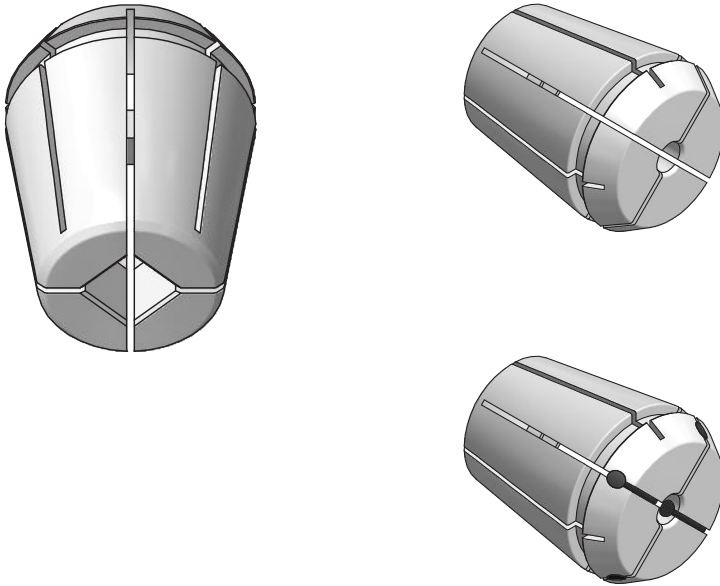
PINZE CON FORI DI LUBRIFICAZIONE
EXTERNALLY COOLED COLLETS
**MAX
25 bar**
0,008

SERIE DI PINZE SU BASE DI LEGNO
COLLETS SETS IN WOODEN TRAY

Articolo	PINZE NELLA SERIE COLLETS IN SET
TY.ERC25JET-5	ERC25JET.D4-6-8-10-12
TY.ERC32JET-6	ERC32JET.D6-8-10-12-16-20
TY.ERC40JET-7	ERC40JET.D6-8-10-12-16-20-25


SERIE DI PINZE IN BOX
COLLETS SETS IN BOX

Articolo	PINZE NELLA SERIE COLLETS IN SET
BX.ERC16JET-5	ERC16JET.D3 ÷ D7 x 1mm
BX.ERC20JET-9	ERC20JET.D3 ÷ D10 x 1mm
BX.ERC25JET-12	ERC25JET.D3 ÷ D14 x 1mm
BX.ERC32JET-18	ERC32JET.D3 ÷ D20 x 1mm
BX.ERC40JET-23	ERC40JET.D4 ÷ D26 x 1mm
BX.ERC50JET-12	ERC50JET.D12 ÷ D34 x 2mm



PINZE PORTAMASCHI CON QUADRO
TAP COLLETS WITH SQUARE

STANDARD

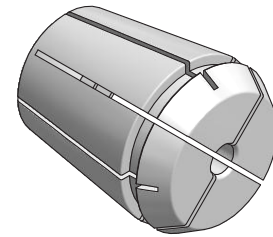
Articolo	D (mm)	MASCHI TAPS
ERC16M	3,5 ÷ 10	M3 ÷ M12
ERC20M	3,5 ÷ 12	M3 ÷ M16
ERC25M	3,5 ÷ 16	M3 ÷ M20
ERC32M	3,5 ÷ 20	M3 ÷ M27
ERC40M	6 ÷ 25	M5 ÷ M33

**TENUTA CON INSERTI IN NEOPRENE
RUBBER SEALED**

Articolo	D (mm)	MASCHI TAPS
ERC16MRF	4 ÷ 8	M4 ÷ M10
ERC20MRF	4 ÷ 10	M4 ÷ M12
ERC25MRF	4 ÷ 12	M4 ÷ M16
ERC32MRF	4,5 ÷ 16	M4 ÷ M22
ERC40MRF	6 ÷ 20	M5 ÷ M27

- Utilizzate per la maschiatura sincronizzata con i maschi DIN371 - 374 - 376
- Con il quadro interno per il trascinamento del maschio.
- Senza compensazione assiale.
- **Bloccano solo il diametro nominale del gambo dei maschi con tolleranza h8.**
- A pagina 374 tabella riepilogativa per la scelta della pinza in base al maschio da utilizzare.
- Le caratteristiche di tenuta delle pinze MRF sono le stesse delle pinze RF illustrate a pagina 295

- *Suitable for syncro tapping with DIN371 - 374 - 376 taps.*
- *With internal square drive for eliminate tap slippage.*
- *Without axial compensation.*
- ***Can clamp only the nominal size of tap shank with tollerance h8.***
- *See page 295 for sealing features.*

PINZE PORTAMASCHI CON QUADRO
TAP COLLETS WITH SQUARE


Articolo	Q
ERC16M.D3,5	2,7
ERC16M.D4	3
ERC16M.D4,5	3,4
ERC16M.D5	4
ERC16M.D5,5	4,3
ERC16M.D6	4,9
ERC16M.D6,3	5
ERC16M.D7	5,5
ERC16M.D8	6,2
* ERC16M.D9	7
* ERC16M.D10	8

Articolo	Q
ERC20M.D3,5	2,7
ERC20M.D4	3
ERC20M.D4,5	3,4
ERC20M.D5	4
ERC20M.D5,5	4,3
ERC20M.D6	4,9
ERC20M.D6,3	5
ERC20M.D7	5,5
ERC20M.D8	6,2
ERC20M.D9	7
ERC20M.D10	8
* ERC20M.D11	9
* ERC20M.D12	9

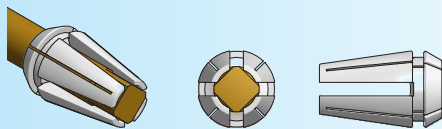
Articolo	Q
ERC25M.D3,5	2,7
ERC25M.D4	3
ERC25M.D4,5	3,4
ERC25M.D5	4
ERC25M.D5,5	4,3
ERC25M.D6	4,9
ERC25M.D6,3	5
ERC25M.D7	5,5
ERC25M.D8	6,2
ERC25M.D9	7
ERC25M.D10	8
ERC25M.D11	9
ERC25M.D11,2	9
ERC25M.D12	9
ERC25M.D14	11
ERC25M.D16	12

Articolo	Q
ERC32M.D3,5	2,7
ERC32M.D4	3
ERC32M.D4,5	3,4
ERC32M.D5	4
ERC32M.D5,5	4,3
ERC32M.D6	4,9
ERC32M.D6,3	5
ERC32M.D7	5,3
ERC32M.D8	6,2
ERC32M.D9	7
ERC32M.D10	8
ERC32M.D11	9
ERC32M.D11,2	9
ERC32M.D12	9
ERC32M.D12,5	10
ERC32M.D14	11
ERC32M.D16	12
ERC32M.D18	14,5
ERC32M.D20	16

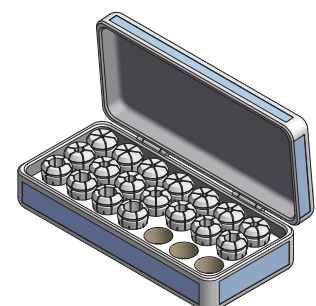
Articolo	Q
ERC40M.D6	4,9
ERC40M.D7	5,5
ERC40M.D8	6,2
ERC40M.D9	7
ERC40M.D10	8
ERC40M.D11	9
ERC40M.D12	9
ERC40M.D14	11
ERC40M.D16	12
ERC40M.D18	14,5
ERC40M.D20	16
ERC40M.D22	18
ERC40M.D25	20

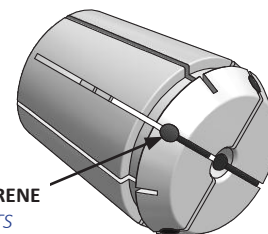
Articolo	Q
ERC50M.D8	6,2
ERC50M.D9	7
ERC50M.D10	8
ERC50M.D11	9
ERC50M.D12	9
ERC50M.D14	11
ERC50M.D16	12
ERC50M.D18	14,5
ERC50M.D20	16
ERC50M.D22	18
ERC50M.D25	20
ERC50M.D28	22
ERC50M.D32	24

- * Tagli posteriori allargati invece del quadro.
- * Large slots instead of square drive.


SERIE DI PINZE IN BOX
COLLETS SETS IN BOX

Articolo	PINZE NELLA SERIE COLLETS IN SET
BX.ERC16M-11	ERC16M.D3,5-4- 4,5- 5- 5,5- 6- 6,3 - 7- 8- 9- 10
BX.ERC20M-13	ERC20M.D3,5-4- 4,5- 5- 5,5- 6- 6,3 - 7- 8- 9- 10- 11- 12
BX.ERC25M-16	ERC25M.D3,5-4- 4,5- 5- 5,5- 6- 6,3 - 7- 8- 9- 10- 11- 12- 14- 16
BX.ERC32M-19	ERC32M.D3,5-4- 4,5- 5- 5,5- 6- 6,3 - 7- 8- 9- 10- 11- 12- 12,5 - 14- 16- 18- 20
BX.ERC40M-13	ERC40M.D6- 7- 8- 9- 10- 11- 12- 14- 16- 18- 20- 22- 25



PINZE PORTAMASCHI A TENUTA CON QUADRO
SEALED TAP COLLETS WITH SQUARE
**MAX
25 bar**


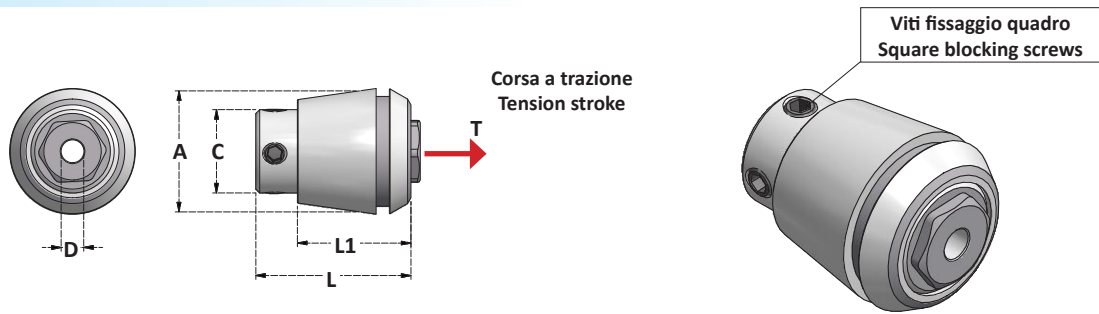
Articolo	Q
ERC16MRF.D4	3
ERC16MRF.D4,5	3,4
ERC16MRF.D5	4
ERC16MRF.D5,5	4,3
ERC16MRF.D6	4,9
ERC16MRF.D7	5,5
ERC16MRF.D8	6,2

Articolo	Q
ERC20MRF.D4	3
ERC20MRF.D4,5	3,4
ERC20MRF.D5	4
ERC20MRF.D5,5	4,3
ERC20MRF.D6	4,9
ERC20MRF.D7	5,5
ERC20MRF.D8	6,2
ERC20MRF.D9	7
ERC20MRF.D10	8

Articolo	Q
ERC25MRF.D4	3
ERC25MRF.D4,5	3,4
ERC25MRF.D5	4
ERC25MRF.D5,5	4,3
ERC25MRF.D6	4,9
ERC25MRF.D7	5,5
ERC25MRF.D8	6,2
ERC25MRF.D9	7
ERC25MRF.D10	8
ERC25MRF.D11	9
ERC25MRF.D12	9

Articolo	Q
ERC32MRF.D4,5	3,4
ERC32MRF.D5	4
ERC32MRF.D5,5	4,3
ERC32MRF.D6	4,9
ERC32MRF.D7	5,5
ERC32MRF.D8	6,2
ERC32MRF.D9	7
ERC32MRF.D10	8
ERC32MRF.D11	9
ERC32MRF.D12	9
ERC32MRF.D14	11
ERC32MRF.D16	11

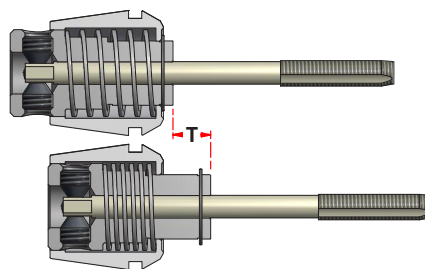
Articolo	Q
ERC40MRF.D6	4,9
ERC40MRF.D7	5,5
ERC40MRF.D8	6,2
ERC40MRF.D9	7
ERC40MRF.D10	8
ERC40MRF.D11	9
ERC40MRF.D12	9
ERC40MRF.D14	11
ERC40MRF.D16	12
ERC40MRF.D18	14,5
ERC40MRF.D20	16

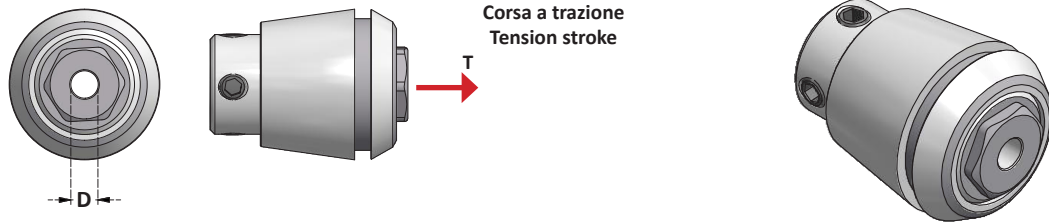
PINZE PORTAMASCHI CON COMPENSAZIONE ASSIALE
TAPPING COLLETS WITH AXIAL COMPENSATION


Articolo		T	A	C	L1	L	D (mm)	MASCHI TAPS
ERC16FT	4033E	7	16	11	22	27	1,4 ÷ 6	M1 ÷ M6
ERC20FT	4284E	7	20	14	24	31	2,2 ÷ 8	M1 ÷ M8
ERC25FT	4285E	8	25	19	24,5	34	2,5 ÷ 10	M3,5 ÷ M10 (M12)
ERC32FT	4538E	10	32	23	31	43	4,5 ÷ 12,5	M4 ÷ M12 (M16)
ERC40FT	4717E	13	40	28	42	54	6 ÷ 16	M6 ÷ M16 (M20)

- Si montano su tutti i tipi di portapinze ER
- L'utilizzo del refrigerante attraverso la pinza è sconsigliato.

- *Can be mounted on every ER collet chuck.*
- *Coolant through collet not recommended.*



PINZE PORTAMASCHI CON COMPENSAZIONE ASSIALE
TAPPING COLLETS WITH AXIAL COMPENSATION


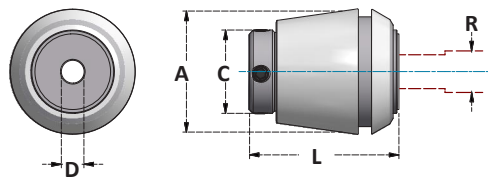
Articolo	T
ERC16FT.D1,4	7
ERC16FT.D1,6	7
ERC16FT.D1,8	7
ERC16FT.D2	7
ERC16FT.D2,2	7
ERC16FT.D2,24	7
ERC16FT.D2,5	7
ERC16FT.D2,8	7
ERC16FT.D3	7
ERC16FT.D3,15	7
ERC16FT.D3,5	7
ERC16FT.D4	7
ERC16FT.D4,5	7
ERC16FT.D5	7
ERC16FT.D5,5	7
ERC16FT.D6	7

Articolo	T
ERC20FT.D2,5	7
ERC20FT.D2,8	7
ERC20FT.D3	7
ERC20FT.D3,5	7
ERC20FT.D4	7
ERC20FT.D4,5	7
ERC20FT.D5	7
ERC20FT.D5,5	7
ERC20FT.D6	7
ERC20FT.D7	7

Articolo	T
ERC25FT.D2,5	8
ERC25FT.D2,8	8
ERC25FT.D3	8
ERC25FT.D3,5	8
ERC25FT.D4	8
ERC25FT.D4,5	8
ERC25FT.D5	8
ERC25FT.D5,5	8
ERC25FT.D6	8
ERC25FT.D7	8
ERC25FT.D8	8
ERC25FT.D9	8
ERC25FT.D10	8

Articolo	T
ERC32FT.D4	10
ERC32FT.D4,5	10
ERC32FT.D5	10
ERC32FT.D5,5	10
ERC32FT.D6	10
ERC32FT.D7	10
ERC32FT.D8	10
ERC32FT.D9	10
ERC32FT.D10	10
ERC32FT.D11	10
ERC32FT.D12	10
ERC32FT.D12,5	10

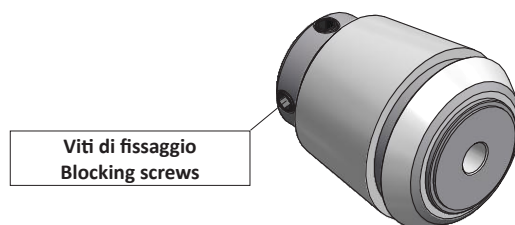
Articolo	T
ERC40FT.D6	13
ERC40FT.D7	13
ERC40FT.D8	13
ERC40FT.D9	13
ERC40FT.D10	13
ERC40FT.D11	13
ERC40FT.D12	13
ERC40FT.D12,5	13
ERC40FT.D14	13
ERC40FT.D16	13

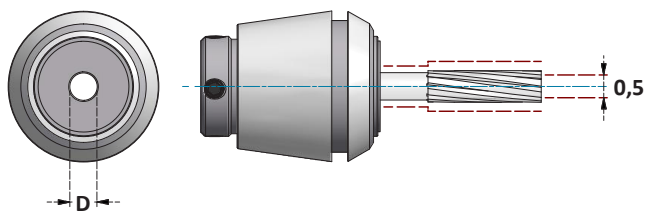
PINZE CON OSCILLAZIONE RADIALE PER ALESATORI
FLOATING COLLETS FOR REAMERS


Articolo	R	C	A	L	D (mm)
ERC16PA	0,5	11	16	29	2 ÷ 7
ERC20PA	0,5	14	20	32	3 ÷ 8
ERC25PA	0,5	18,5	25	35	3 ÷ 10
ERC32PA	0,5	24	32	44	4 ÷ 14
ERC40PA	0,5	30	40	56	5 ÷ 16

- Si montano su tutti i tipi di mandrini portapinze ER.
- Sono adatte anche alla maschiatura rigida.
- Non utilizzare il refrigerante attraverso la pinza.

- *Used with all types of ER collet chucks.*
- *Suitable also for tapping operations.*
- *Coolant through collet not recommended.*



PINZE CON OSCILLAZIONE RADIALE PER ALESATORI
FLOATING COLLETS FOR REAMERS


Articolo
ERC16PA.D2
ERC16PA.D3
ERC16PA.D4
ERC16PA.D5
ERC16PA.D6
ERC16PA.D7

Articolo
ERC20PA.D3
ERC20PA.D4
ERC20PA.D5
ERC20PA.D6
ERC20PA.D7
ERC20PA.D8

Articolo
ERC25PA.D3
ERC25PA.D4
ERC25PA.D5
ERC25PA.D6
ERC25PA.D7
ERC25PA.D8
ERC25PA.D9
ERC25PA.D10

Articolo
ERC32PA.D4
ERC32PA.D5
ERC32PA.D6
ERC32PA.D7
ERC32PA.D8
ERC32PA.D9
ERC32PA.D10
ERC32PA.D11
ERC32PA.D12
ERC32PA.D13
ERC32PA.D14

Articolo
ERC40PA.D5
ERC40PA.D6
ERC40PA.D7
ERC40PA.D8
ERC40PA.D9
ERC40PA.D10
ERC40PA.D11
ERC40PA.D12
ERC40PA.D13
ERC40PA.D14
ERC40PA.D15
ERC40PA.D16