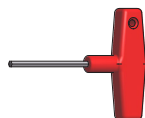


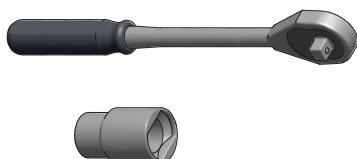
**CHIAVI PER MANDRINI DA TRAPANO**  
*WRENCHES FOR DRILL CHUCKS*

PAG. 351



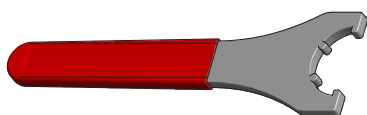
**CHIAVI PER MANDRINI IDRAULICI**  
*WRENCHES FOR HYDRAULIC CHUCKS*

PAG. 351



**CRICCHETTO E BUSSOLE DI SERRAGGIO DEI TIRANTI**  
*QUICK RATCHET AND SOCKETS FOR PULL STUDS*

PAG. 352



**CHIAVI PER GHIERE CHIUDIPINZA**  
*WRENCHES FOR CLAMPING NUTS*

PAG. 353



**CHIAVI A SETTORE PER GHIERE CHIUDIPINZA**  
*HOOK WRENCHES FOR CLAMPING NUTS*

PAG. 354



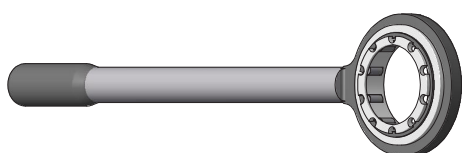
**CHIAVI DINAMOMETRICHE PER GHIERE CHIUDIPINZA**  
*TORQUE WRENCHES FOR CLAMPING NUTS*

PAG. 355



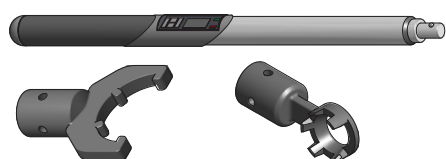
**CHIAVI A RULLI**  
*WRENCHES WITH ROLLERS*

PAG. 356



**CHIAVI DINAMOMETRICHE A RULLI**  
*TORQUE WRENCHES WITH ROLLERS*

PAG. 356



**CHIAVE DINAMOMETRICA DIGITALE**  
*DIGITAL TORQUE WRENCH*

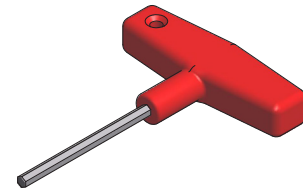
**INSERTI INTERCAMBIABILI**  
*INTERCHANGEABLE INSERTS*

PAG. 357

## CHIAVI ESAGONALI PER MANDRINI PORTAPUNTA AUTOSERRANTI E PER MANDRINI IDRAULICI

*WRENCHES FOR DRILL CHUCKS AND FOR HYDRAULIC CHUCKS*

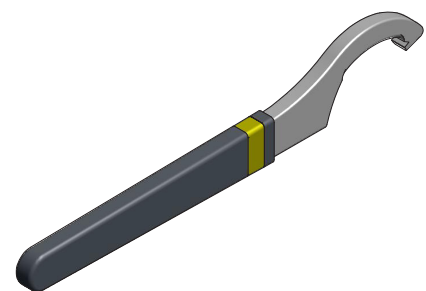
Articolo	EX	PER MANDRINI FOR CHUCKS	PER MANDRINI FOR TOOLHOLDERS
<b>CH.EX5</b>	5	HD8 CP8	HY6 ÷ HY20
<b>CH.EX6</b>	6	HD13- CP16 CP13- CP16	HY25 HY32



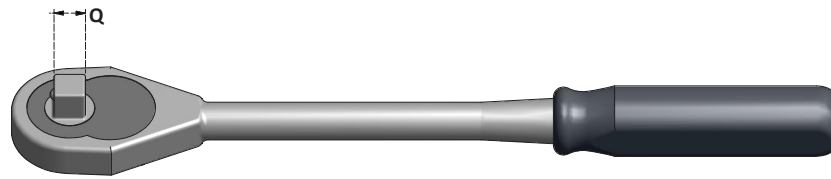
## CHIAVI A SETTORE PER MANDRINI PORTAPUNTA AUTOSERRANTI

*HOOK WRENCHES FOR DRILL CHUCKS*

Articolo	PER MANDRINI FOR CHUCKS
<b>CH.DC8</b>	DC8 DCK8
<b>CH.DC10</b>	DC10 DCK10
<b>CH.DC13</b>	DC13 DCK13
<b>CH.DC16</b>	DC16 DCK16



**CRICCHETTO E BUSSOLE PER IL SERRAGGIO DEI TIRANTI**  
*QUICK RATCHET AND SOCKETS FOR PULL STUD CLAMPING*



Articolo	Q
<b>CH.SKT</b>	1/2"

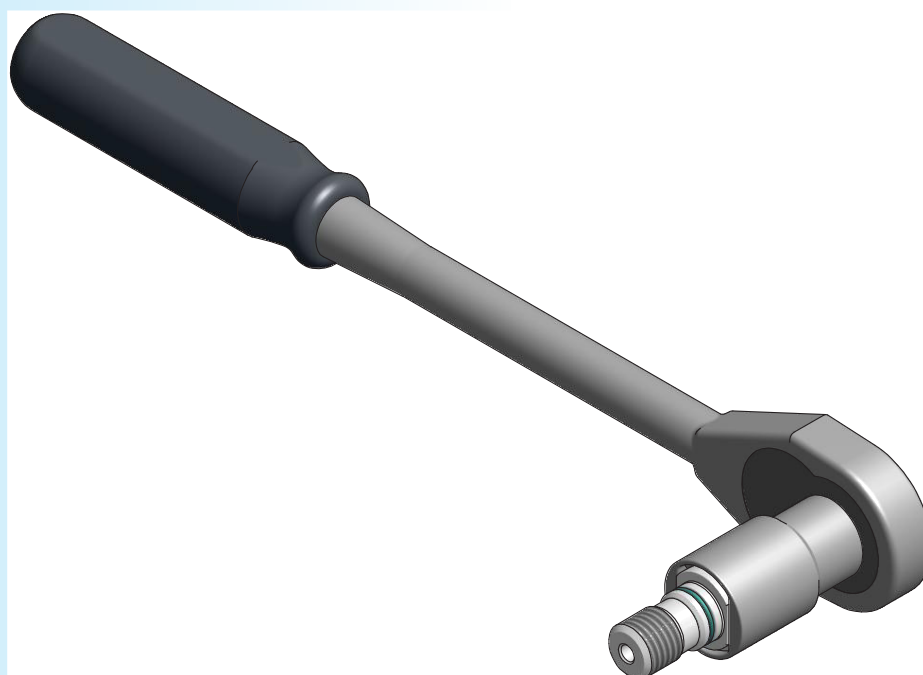
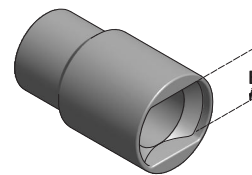
SKT

Articolo	PER I TIRANTI FOR PULL STUDS	E
<b>SKT.DIN40</b>	DIN40	19
<b>SKT.DIN50</b>	DIN50	30

Articolo	PER I TIRANTI FOR PULL STUDS	E
<b>SKT.CAT40</b>	CAT40	18
<b>SKT.CAT50</b>	CAT50	30

Articolo	PER I TIRANTI FOR PULL STUDS	E
<b>SKT.BT40</b>	BT40	19
<b>SKT.BT50</b>	BT50	30

Articolo	PER I TIRANTI FOR PULL STUDS	E
<b>SKT.JS40</b>	JS40	19
<b>SKT.JS50</b>	JS50	30



## CHIAVI PER GHIERE DI SERRAGGIO

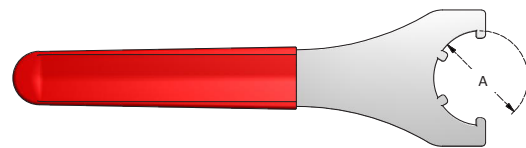
### WRENCHES FOR CLAMPING NUTS

#### CHIAVI PER GHIERE CON TACCHE

##### WRENCHES FOR NUTS WITH SLOTS

Articolo	A
<b>CH8M</b>	12
<b>CH11M</b>	16
<b>CH16M</b>	22
<b>CH20M</b>	28
<b>CH25M</b>	35

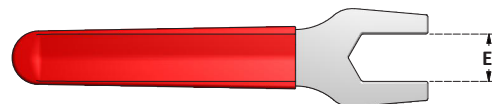
Articolo	A
<b>CH16S</b>	32
<b>CH20S</b>	35
<b>CH25S</b>	42
<b>CH32S</b>	50
<b>CH40S</b>	63
<b>CH50S</b>	78



#### CHIAVI PER GHIERE CON ESAGONO

##### WRENCHES FOR NUTS WITH HEXAGON

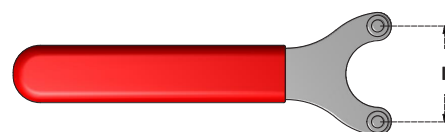
Articolo	E
<b>CH.E14</b>	14
<b>CH.E15</b>	15
<b>CH.E17</b>	17
<b>CH.E19</b>	19
<b>CH.E22</b>	22
<b>CH.E25</b>	25
<b>CH.E27</b>	27
<b>CH.E28</b>	28
<b>CH.E30</b>	30
<b>CH.E32</b>	32
<b>CH.E34</b>	34
<b>CH.E36</b>	36
<b>CH.E38</b>	38
<b>CH.E42</b>	42
<b>CH.E50</b>	50



#### CHIAVI PER GHIERE CON FORI

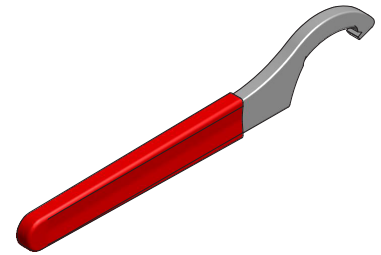
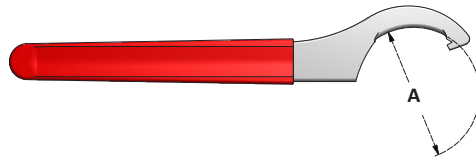
##### WRENCHES FOR NUTS WITH HOLES

Articolo	I
<b>CH11A</b>	13,35
<b>CH16A</b>	18,1
<b>CH20A</b>	20,6
<b>CH25A</b>	23,75
<b>CH32A</b>	31



**CHIAVI A SETTORE PER GHIERE CHIUDIPINZA**

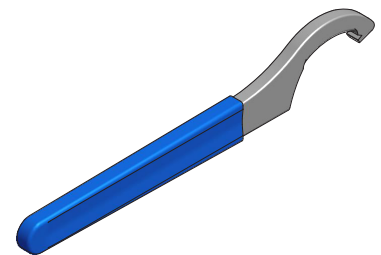
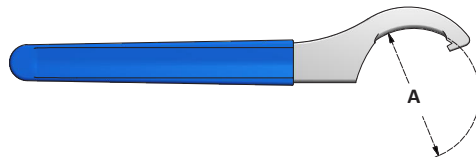
*HOOK WRENCHES FOR CLAMPING NUTS*



Articolo	A
<b>CHO16/20</b>	45-50
<b>CHO25</b>	58-62-65
<b>CHO32</b>	68-70-75
<b>CHO40</b>	80-85-90

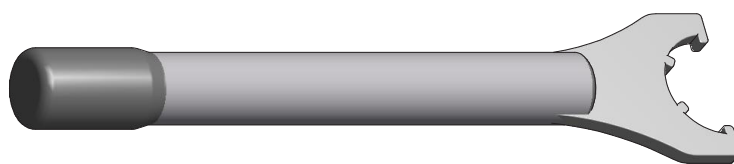
**CHIAVI A SETTORE PER GHIERE SKS**

*HOOK WRENCHES FOR SKS NUTS*



Articolo	A
<b>CH10SKS</b>	30-32
<b>CH16SKS</b>	40-42
<b>CH20SKS</b>	45-50
<b>CH25SKS</b>	52-55

**CHIAVI DINAMOMETRICHE PER GHIERE CHIUDIPINZA**  
*TORQUE WRENCHES FOR CLAMPING NUTS*

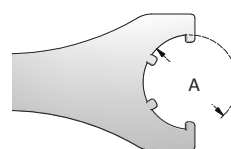
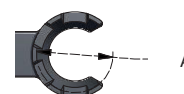


**CHIAVI PER GHIERE CON TACCHE**

*WRENCHES FOR NUTS WITH SLOTS*

Articolo	A
<b>CD8M</b>	12
<b>CD11M</b>	16
<b>CD16M</b>	22
<b>CD20M</b>	28
<b>CD25M</b>	35

Articolo	A
<b>CD16S</b>	32
<b>CD20S</b>	35
<b>CD25S</b>	42
<b>CD32S</b>	50
<b>CD40S</b>	63



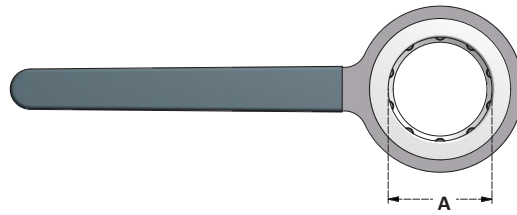
**CHIAVI PER GHIERE ESAGONALI**

*WRENCHES FOR NUTS WITH HEXAGON*

Articolo	E
<b>CD.E14</b>	14
<b>CD.E17</b>	17
<b>CD.E22</b>	22
<b>CD.E25</b>	25
<b>CD.E30</b>	30



**CHIAVI A RULLI PER GHIERE CHIUDIPINZA SENZA TACCHE**  
*WRENCHES WITH ROLLERS FOR NOTCH FREE CLAMPING NUTS*



**PER GHIERE MINI SENZA TACCHE**  
*FOR NOTCH-FREE MINI NUTS*

Articolo	A
<b>CR8M</b>	12
<b>CR11M</b>	16
<b>CR16M</b>	22
<b>CR20M</b>	28
<b>CR25M</b>	35

**PER GHIERE STANDARD SENZA TACCHE**  
*FOR NOTCH-FREE STANDARD NUTS*

Articolo	A
<b>CR16</b>	32
<b>CR20</b>	35
<b>CR25</b>	42
<b>CR32</b>	50
<b>CR40</b>	63



**CHIAVI DINAMOMETRICHE A RULLI PER GHIERE CHIUDIPINZA SENZA TACCHE**  
*TORQUE WRENCHES WITH ROLLERS FOR NOTCH FREE CLAMPING NUTS*



**PER GHIERE MINI SENZA TACCHE**  
*FOR NOTCH-FREE MINI NUTS*

Articolo	A	Nm Max
<b>CD8NFM</b>	12	8
<b>CD11NFM</b>	16	18
<b>CD16NFM</b>	22	30
<b>CD20NFM</b>	28	35
<b>CD25NFM</b>	35	40

**PER GHIERE STANDARD SENZA TACCHE**  
*FOR NOTCH-FREE STANDARD NUTS*

Articolo	A	Nm Max
<b>CD16NF</b>	32	40
<b>CD20NF</b>	35	50
<b>CD25NF</b>	42	90
<b>CD32NF</b>	50	130
<b>CD40NF</b>	63	200



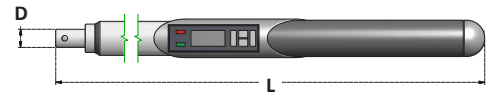
**CHIAVE DINAMOMETRICA DIGITALE**  
*DIGITAL TORQUE WRENCH*



**PILE INCLUSE**  
*BATTERIES INCLUDED*

**FORNITA SENZA INSERTI**  
*SUPPLIED WITHOUT INSERTS*

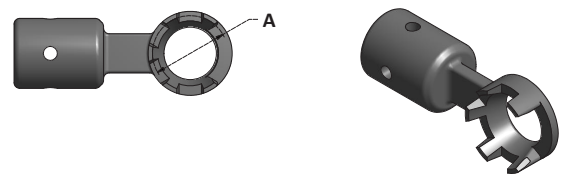
Articolo	L	D	Range
<b>CDD200</b>	540	16	20- 200 Nm



**INSERTI INTERCAMBIABILI**  
*INTERCHANGEABLE INSERTS*

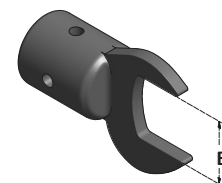
**PER GHIERE MINI**  
*FOR MINI NUTS*

Articolo	A
<b>CDD.11M</b>	16
<b>CDD.16M</b>	22
<b>CDD.20M</b>	28
<b>CDD.25M</b>	35



**PER GHIERE ESAGONALI**  
*FOR HEXAGONAL NUT*

Articolo	E
<b>CDD.16SE</b>	25
<b>CDD.20SE</b>	30



**PER GHIERE CON TACCHE**  
*FOR NUTS WITH SLOTS*

Articolo	A
<b>CDD.25S</b>	42
<b>CDD.32S</b>	50
<b>CDD.40S</b>	63

