

1.3
• portafrese combinati
Combinet milling cutter chucks

1.4
• Portafrese a manicotto
Face milling cutter chucks

1.5
• Portafrese a manicotto
Face milling cutter chucks

1.6
• Portafrese weldon
Milling cutter chucks Weldon

1.9
• Portafrese per calettamento
Shrink chucks

1.10
• Portafrese per calettamento
Shrink chucks

1.11
• Mandrini idraulici
hydraulic clamping chucks

1.12
• Mandrini idraulici
hydraulic clamping chucks

1.13
• Mandrini portatestine filettate
Chucks for threaded heads

1.15
• Mandrini portapunte
Integral drill chucks

1.16
• Portafrese a cono Morse
Milling cutter with Morse cone

1.17
• Portapunte a cono Morse
Drill chucks with Morse cone

1.18
• Barre semifinite
Unfinished taper-shank blanks

1.19
• Mandrini a forte serraggio
Milling chuck

1.20
• Portapinze ER DIN 6499
Collet chucks ER DIN 6499

1.21
• Portapinze ER DIN 6499
Collet chucks ER DIN 6499

1.22
• Portaastucci registrabili
Adaptors for adjustable inserts

1.23
• Maschiatori
Tapping chuck

1.24
• Cilindri di collaudo
Test arbors

1.25
• VARILOCK
VARILOCK



HSK-A
DIN 69893/1-A
Attacchi
con cono HSK-A
Attachments with
HSK-A cone

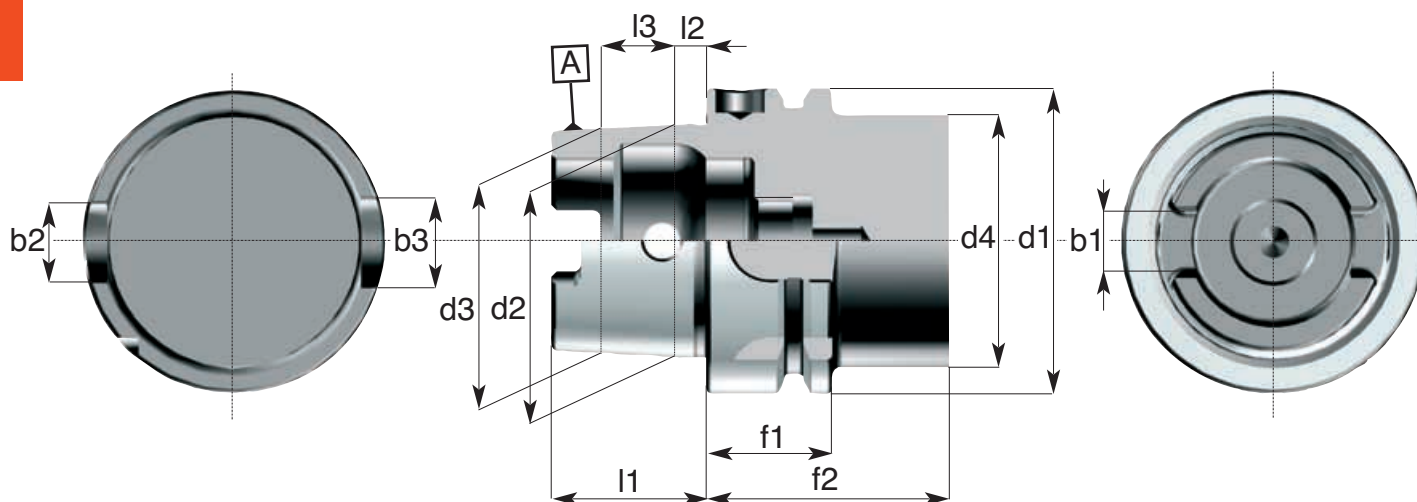


DIN 69893/1-A



Attacchi HSK DIN 69893/1-A

1.
2.



Riferimento Item	d1	d2	d3	d4 max	l1	l2	l3	f1	f2 min	b1	b2	b3
HSKA 32	32	24	23.27	26	16	3.2	7.3	20	35	7	7	9
HSKA 40	40	30	29.05	34	20	5	9.5	20	35	8	9	11
HSKA 50	50	38	36.90	42	25	5	11	26	42	10.5	12	14
HSKA 63	63	48	46.53	53	32	6.3	14.7	26	42	12.5	16	18
HSKA 80	80	60	58.10	67	40	8	19	26	42	16	18	20
HSKA 100	100	75	72.60	85	50	10	24	29	45	20	20	22

CARATTERISTICHE TECNICHE DEI MANDRINI HSK

- Costruiti in acciaio da cementazione legato
- Cementati con profondità 0,8-1mm
Temprati • Rinvenuti • Sabbiati e bruniti
- Durezza HRC 58±2 • Resistenza al nucleo 800-1000 N/mm²
- Rettificati di precisione esternamente, internamente e nelle filettature delle ghiera chiudipinza
- Controllati con strumenti di misura certificati
- La tolleranza di precisione dei coni HSK è AT2

STANDARD FEATURES OF HSK TOOLING

- Manufactured with Nickel Chrome Molybdenum steel
- Carburized with depth of case 0,8-1 mm
• Hardened and tempered • Black oxidized
- Surface Hardness RC 58±2 • Tensile strenght of core 800-1000 N/mm²
- Precision ground on shanks, inside tapers and collet nut threads
- Tested with high precision inspection and gaging equipment
- Taper accuracy of HSK SHANKS is AT2



Adduttore Refrigerante per HSK da ordinare a parte Pag. 12.42
 Coolant pipe for HSK to be ordered separately Pag. 12.42

ACCESSORI PER MACCHINE UTENSILI

Portafrese combinati con trascinamento frontale e chiavetta DIN 6358

Combined milling cutter chucks DIN 6358 B

Kombi-Aufsteckfräserdorne DIN 6358 B

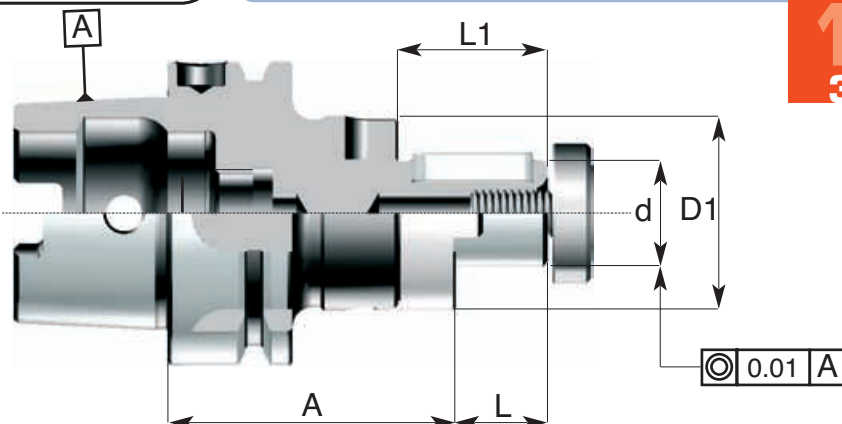
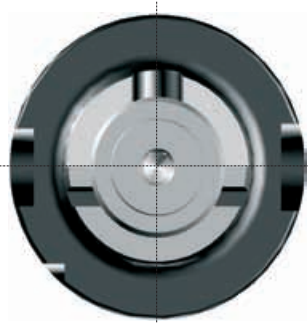
Mandrins porte-fraises combinés DIN 6358 B



Prebilanciato
Prebalanced
G6.3 / 8000rpm

DIN 69893/1-A

ART: HSKA.130



1.
3

Codice di ord Code	HSKA	d h6	A	L	L1	D1	Trascinatore Ring	Vite Screw	Linguetta Key
HSKA.130.50.0160	HSK 50	16	60	17	27	32	190.01	191.01	130.199.01
HSKA.130.50.0220	HSK 50	22	60	19	31	40	190.02	191.02	130.199.02
HSKA.130.50.0270	HSK 50	27	70	21	33	48	190.03	191.03	130.199.03
HSKA.130.50.0320	HSK 50	32	70	24	38	58	190.04	191.04	130.199.04
HSKA.130.63.0160	HSK 63	16	60	17	27	32	190.01	191.01	130.199.01
HSKA.130.63.0162	HSK 63	16	100	17	27	32	190.01	191.01	130.199.01
HSKA.130.63.0164	HSK 63	16	150	17	27	32	190.01	191.01	130.199.01
HSKA.130.63.0220	HSK 63	22	60	19	31	40	190.02	191.02	130.199.02
HSKA.130.63.0222	HSK 63	22	100	19	31	40	190.02	191.02	130.199.02
HSKA.130.63.0224	HSK 63	22	150	19	31	40	190.02	191.02	130.199.02
HSKA.130.63.0270	HSK 63	27	60	21	33	48	190.03	191.03	130.199.03
HSKA.130.63.0272	HSK 63	27	100	21	33	48	190.03	191.03	130.199.03
HSKA.130.63.0274	HSK 63	27	150	21	33	48	190.03	191.03	130.199.03
HSKA.130.63.0320	HSK 63	32	65	24	38	58	190.04	191.04	130.199.04
HSKA.130.63.0322	HSK 63	32	100	24	38	58	190.04	191.04	130.199.04
HSKA.130.63.0324	HSK 63	32	150	24	38	58	190.04	191.04	130.199.04
HSKA.130.63.0400	HSK 63	40	77	27	41	70	190.05	191.05	130.199.05
HSKA.130.63.0402	HSK 63	40	100	27	41	70	190.05	191.05	130.199.05
HSKA.130.80.0160	HSK 80	16	60	17	27	32	190.01	191.01	130.199.01
HSKA.130.80.0220	HSK 80	22	60	19	31	40	190.02	191.02	130.199.02
HSKA.130.80.0270	HSK 80	27	60	21	33	48	190.03	191.03	130.199.03
HSKA.130.80.0320	HSK 80	32	62	24	38	58	190.04	191.04	130.199.04
HSKA.130.80.0400	HSK 80	40	75	27	41	70	190.05	191.05	130.199.05
HSKA.130.100.0160	HSK 100	16	63	17	27	32	190.01	191.01	130.199.01
HSKA.130.100.0220	HSK 100	22	60	19	31	40	190.02	191.02	130.199.02
HSKA.130.100.0222	HSK 100	22	90	19	31	40	190.02	191.02	130.199.02
HSKA.130.100.0224	HSK 100	22	120	19	31	40	190.02	191.02	130.199.02
HSKA.130.100.0270	HSK 100	27	60	21	33	48	190.03	191.03	130.199.03
HSKA.130.100.0272	HSK 100	27	90	21	33	48	190.03	191.03	130.199.03
HSKA.130.100.0274	HSK 100	27	120	21	33	48	190.03	191.03	130.199.03
HSKA.130.100.0320	HSK 100	32	65	24	38	58	190.04	191.04	130.199.04
HSKA.130.100.0322	HSK 100	32	90	24	38	58	190.04	191.04	130.199.04
HSKA.130.100.0324	HSK 100	32	120	24	38	58	190.04	191.04	130.199.04
HSKA.130.100.0400	HSK 100	40	73	27	41	70	190.05	191.05	130.199.05
HSKA.130.100.0500	HSK 100	50	80	30	46	90	190.06	191.06	130.199.06

1. MANDRINI a cono HSKA DIN 69893/1

TOOL HOLDERS with HSKA cone DIN 69893/1



Portafrese con trascinamento frontale per frese a manicotto DIN 138

Face milling cutter chucks DIN 138

Aufsteckfräserdorne DIN 138

Mandrins porte-fraises à surfacer DIN 138

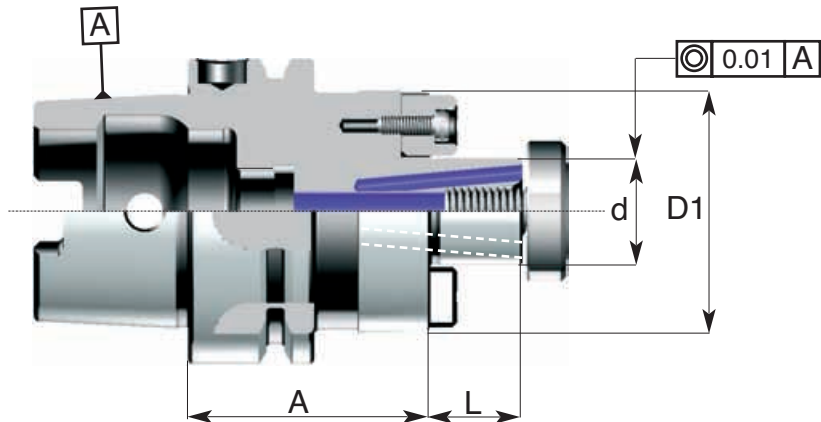
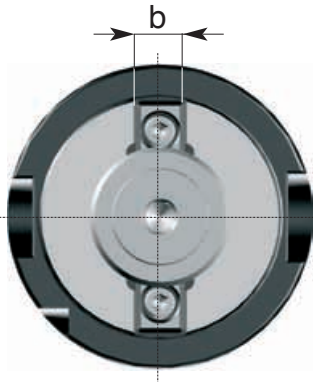
ACCESSORI PER MACCHINE UTENSILI



DIN 69893/1-A

Prebilanciato
Prebalanced
G6.3 / 8000rpm

ART: HSKA.150



Codice di ord Code	HSKA	d h6	A	L	D1	b	Tassello Tenon	Vite Screw
HSKA.150.40.0160	HSK 40	16	45	17	32	8	192.06	191.01
HSKA.150.40.0220	HSK 40	22	50	19	40	10	192.07	191.02
HSKA.150.40.0270	HSK 40	27	55	21	48	12	192.08	191.03
HSKA.150.50.0160	HSK 50	16	52	17	40	8	192.06	191.01
HSKA.150.50.0220	HSK 50	22	52	19	50	10	192.07	191.02
HSKA.150.50.0270	HSK 50	27	62	21	60	12	192.08	191.03
HSKA.150.63.0160	HSK 63	16	50	17	40	8	192.06	191.01
HSKA.150.63.0220	HSK 63	22	50	19	50	10	192.07	191.02
HSKA.150.63.0270	HSK 63	27	60	21	60	12	192.08	191.03
HSKA.150.63.0320	HSK 63	32	60	24	68	14	192.09	191.04
HSKA.150.63.0400	HSK 63	40	62	27	82	16	192.10	191.05
HSKA.150.80.0160	HSK 80	16	50	17	40	8	192.06	191.01
HSKA.150.80.0220	HSK 80	22	50	19	50	10	192.07	191.02
HSKA.150.80.0270	HSK 80	27	50	21	60	12	192.08	191.03
HSKA.150.80.0320	HSK 80	32	52	24	68	14	192.09	191.04
HSKA.150.80.0400	HSK 80	40	60	27	82	16	192.10	191.05
HSKA.150.100.0220	HSK 100	22	50	19	50	10	192.07	191.02
HSKA.150.100.0270	HSK 100	27	50	21	60	12	192.08	191.03
HSKA.150.100.0320	HSK 100	32	50	24	68	14	192.09	191.04
HSKA.150.100.0400	HSK 100	40	60	27	82	16	192.10	191.05

Pag. 1226



Pag. 1225



ACCESSORI PER MACCHINE UTENSILI

Portafrese con trascinamento frontale e Linguetta DIN 138

Face milling cutter chucks DIN 138

Aufsteckfräserdorne DIN 138

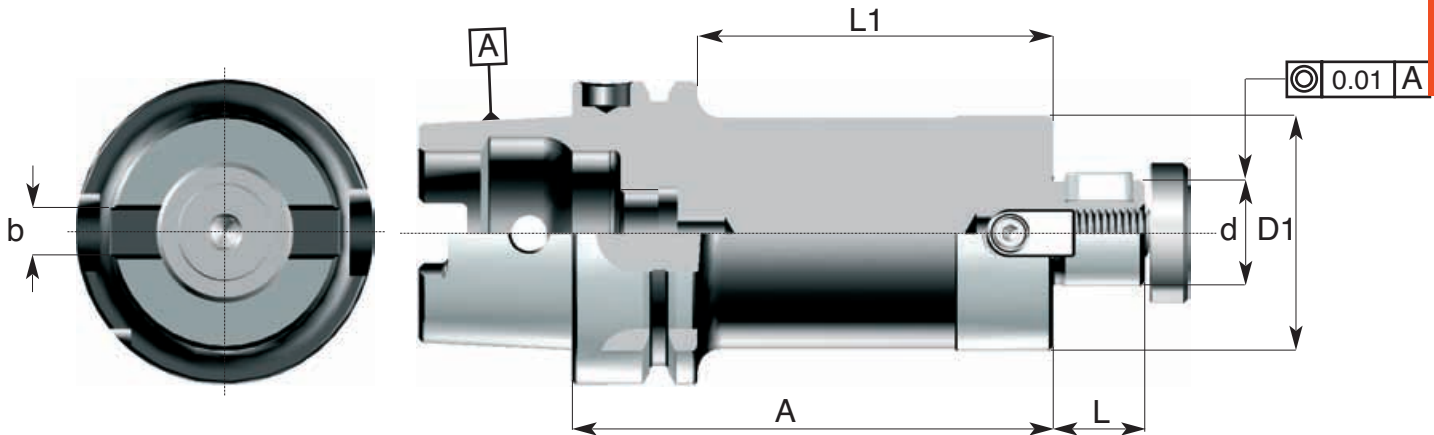
Mandrins porte-fraises à surfacer DIN 138



Prebilanciato
Prebalanced
G6.3 / 8000rpm

DIN 69893/1-A

ART: HSKA.151



1.
5

Codice di ord Code	HSKA	d h6	A	L	L1	b	D1	Tassello Tenon	Vite Screw	Linguetta Key
HSKA.151.63.0220	HSK 63	22	100	19	74	10	49	151.101	191.01	151.199.01
HSKA.151.63.0222	HSK 63	22	150	19	124	10	49	151.101	191.01	151.199.01
HSKA.151.63.0224	HSK 63	22	200	19	174	10	49	151.101	191.01	151.199.01
HSKA.151.63.0270	HSK 63	27	100	21	74	12	60	151.102	191.02	151.199.02
HSKA.151.63.0272	HSK 63	27	150	21	124	12	60	151.102	191.02	151.199.02
HSKA.151.63.0274	HSK 63	27	200	21	174	12	60	151.102	191.02	151.199.02
HSKA.151.63.0320	HSK 63	32	100	27	74	14	65	151.103	191.03	151.199.03
HSKA.151.63.0322	HSK 63	32	150	27	124	14	65	151.103	191.03	151.199.03

Peg. 12.27



Peg. 12.25



1. MANDRINI a cono HSKA DIN 69893/1

TOOL HOLDERS with HSKA cone DIN 69893/1



Portafrese cilindriche tipo weldon con vite di registrazione interna DIN 6359 B

Milling cutter chucks for straight-shank tools - Weldon System DIN 6359 B

Spannfutter Weldon für Zylinderschäfte DIN 6359 B

Mandrins porte-Weldon pour fraises à queue cylindrique DIN 6359 B

ACCESSORI PER MACCHINE UTENSILI

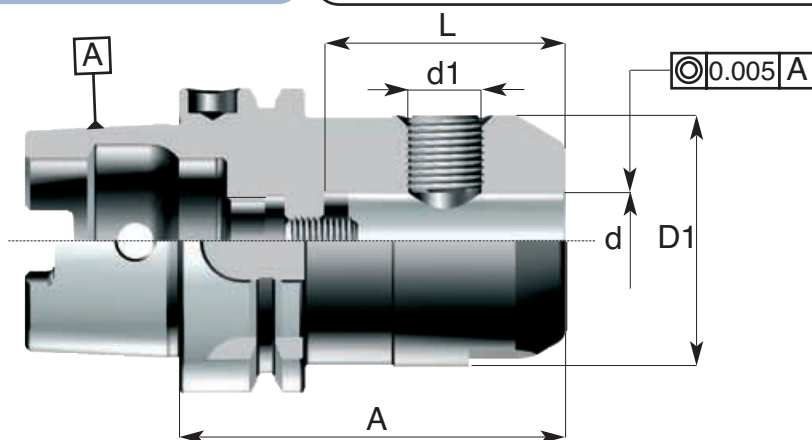


DIN 69893/1-A

Prebilanciato
Prebalanced
G6.3 / 8000rpm

ART: HSKA.208

1.
6



Codice di ord Code	HSKA	d H5	A	D1	L	d1	Grano di serraggio Clamping screw
HSKA.208.32.0060	HSK 32	6	60	25	37	M6X10	208.00.0060
HSKA.208.32.0080	HSK 32	8	60	28	37	M8X10	208.00.0080
HSKA.208.32.0100	HSK 32	10	65	35	41	M10MX12	208.00.0100
HSKA.208.32.0120	HSK 32	12	75	42	46	M12X1.5X16	208.00.0120
HSKA.208.32.0140	HSK 32	14	75	42	46	M12X1.5X16	208.00.0120
HSKA.208.32.0160	HSK 32	16	75	42	49	M14X1.5X16	208.00.0140
HSKA.208.40.0060	HSK 40	6	60	25	37	M6X10	208.00.0060
HSKA.208.40.0080	HSK 40	8	60	28	37	M8X10	208.00.0080
HSKA.208.40.0100	HSK 40	10	75	35	41	M10X12	208.00.0100
HSKA.208.40.0120	HSK 40	12	75	42	46	M12X1.5X16	208.00.0120
HSKA.208.40.0140	HSK 40	14	75	42	46	M12X1.5X16	208.00.0120
HSKA.208.40.0160	HSK 40	16	80	42	49	M14X1.5X16	208.00.0140
HSKA.208.40.0180	HSK 40	18	80	42	49	M14X1.5X16	208.00.0160
HSKA.208.40.0200	HSK 40	20	80	42	51	M16X1.5X16	208.00.0160
HSKA.208.50.0060	HSK 50	6	65	25	37	M6X10	208.00.0060
HSKA.208.50.0080	HSK 50	8	65	28	37	M8X10	208.00.0080
HSKA.208.50.0100	HSK 50	10	75	35	41	M10X12	208.00.0100
HSKA.208.50.0120	HSK 50	12	80	42	46	M12X1.5X16	208.00.0120
HSKA.208.50.0140	HSK 50	14	80	44	46	M12X1.5X16	208.00.0120
HSKA.208.50.0160	HSK 50	16	80	48	49	M14X1.5X16	208.00.0140
HSKA.208.50.0180	HSK 50	18	80	50	49	M14X1.5X16	208.00.0160
HSKA.208.50.0200	HSK 50	20	80	52	51	M16X1.5X16	208.00.0160



ACCESSORI PER MACCHINE UTENSILI

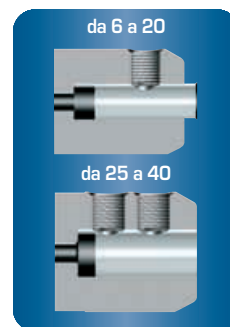
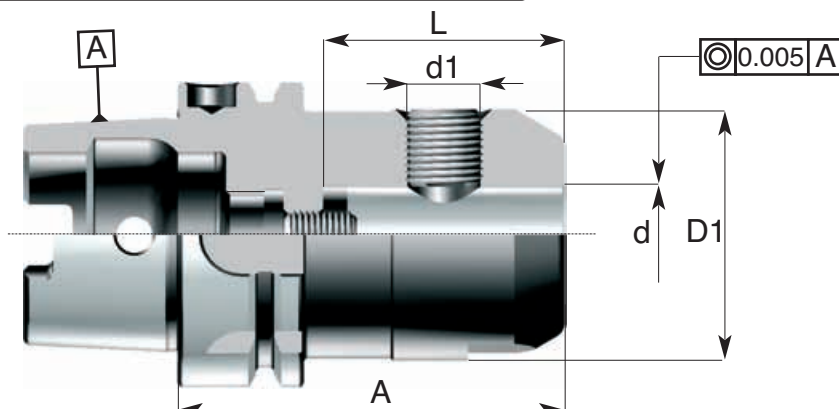
Portafrese cilindriche tipo weldon con vite di registrazione interna DIN 6359 B
 Milling cutter chucks for straight-shank tools - Weldon System DIN 6359 B
 Spannfutter Weldon für Zylinderschäfte DIN 6359 B
 Mandrins porte-Weldon pour fraises à queue cylindrique DIN 6359 B



Prebilanciato
 Prebalanced
 G6.3 / 8000rpm

DIN 69893/1-A

ART: HSKA.208



1.
7

Codice di ord Code	HSKA-A	d H5	A	D1	L	d1	Grano di serraggio Clamping screw
HSKA.208.63.0060	HSK 63	6	65	25	38	M6X10	208.00.0060
HSKA.208.63.0080	HSK 63	8	65	28	38	M8X10	208.00.0080
HSKA.208.63.0100	HSK 63	10	75	35	45	M10X12	208.00.0100
HSKA.208.63.0120	HSK 63	12	80	42	48	M12X1.5X16	208.00.0120
HSKA.208.63.0140	HSK 63	14	80	44	48	M12X1.5X16	208.00.0120
HSKA.208.63.0160	HSK 63	16	80	48	50	M14X1.5X16	208.00.0140
HSKA.208.63.0180	HSK 63	18	80	50	50	M14X1.5X16	208.00.0160
HSKA.208.63.0200	HSK 63	20	80	52	50	M16X1.5X16	208.00.0160
HSKA.208.63.0250	HSK 63	25	110	65	65	M18X1.5X20	208.00.0180
HSKA.208.63.0320	HSK 63	32	110	72	65	M20X1.5X20	208.00.0200
HSKA.208.80.0060	HSK 80	6	80	25	38	M6X10	208.00.0060
HSKA.208.80.0080	HSK 80	8	80	28	38	M8X10	208.00.0080
HSKA.208.80.0100	HSK 80	10	80	35	45	M10X12	208.00.0100
HSKA.208.80.0120	HSK 80	12	90	42	50	M12X1.5X16	208.00.0120
HSKA.208.80.0140	HSK 80	14	90	44	50	M12X1.5X16	208.00.0120
HSKA.208.80.0160	HSK 80	16	100	48	55	M14X1.5X16	208.00.0140
HSKA.208.80.0180	HSK 80	18	100	50	55	M14X1.5X16	208.00.0160
HSKA.208.80.0200	HSK 80	20	100	52	55	M16X1.5X16	208.00.0160
HSKA.208.80.0250	HSK 80	25	110	65	65	M18X1.5X20	208.00.0180
HSKA.208.80.0320	HSK 80	32	110	72	65	M20X1.5X20	208.00.0200
HSKA.208.100.0060	HSK 100	6	80	25	38	M6X10	208.00.0060
HSKA.208.100.0080	HSK 100	8	80	28	38	M8X10	208.00.0080
HSKA.208.100.0100	HSK 100	10	85	35	45	M10X12	208.00.0100
HSKA.208.100.0120	HSK 100	12	90	42	50	M12X1.5X16	208.00.0120
HSKA.208.100.0140	HSK 100	14	90	44	50	M12X1.5X16	208.00.0120
HSKA.208.100.0160	HSK 100	16	100	48	55	M14X1.5X16	208.00.0140
HSKA.208.100.0180	HSK 100	18	100	50	55	M14X1.5X16	208.00.0160
HSKA.208.100.0200	HSK 100	20	100	52	55	M16X1.5X16	208.00.0160
HSKA.208.100.0250	HSK 100	25	100	65	60	M18X1.5X20	208.00.0180
HSKA.208.100.0320	HSK 100	32	110	72	65	M20X1.5X20	208.00.0200
HSKA.208.100.0400	HSK 100	40	120	80	75	M20X1.5X20	208.00.0200



1. MANDRINI a cono HSKA DIN 69893/1

TOOL HOLDERS with HSKA cone DIN 69893/1



Portafrese cilindriche tipo weldon con vite di registrazione interna DIN 6359 B
 Milling cutter chucks for straight-shank tools - Weldon System DIN 6359 B
 Spannfutter Weldon für Zylinderschäfte DIN 6359 B
 Mandrins porte-Weldon pour fraises à queue cylindrique DIN 6359 B

ACCESSORI PER MACCHINE UTENSILI

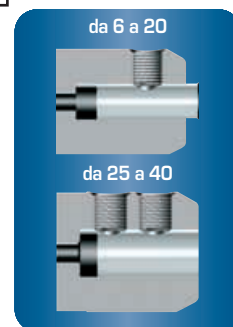
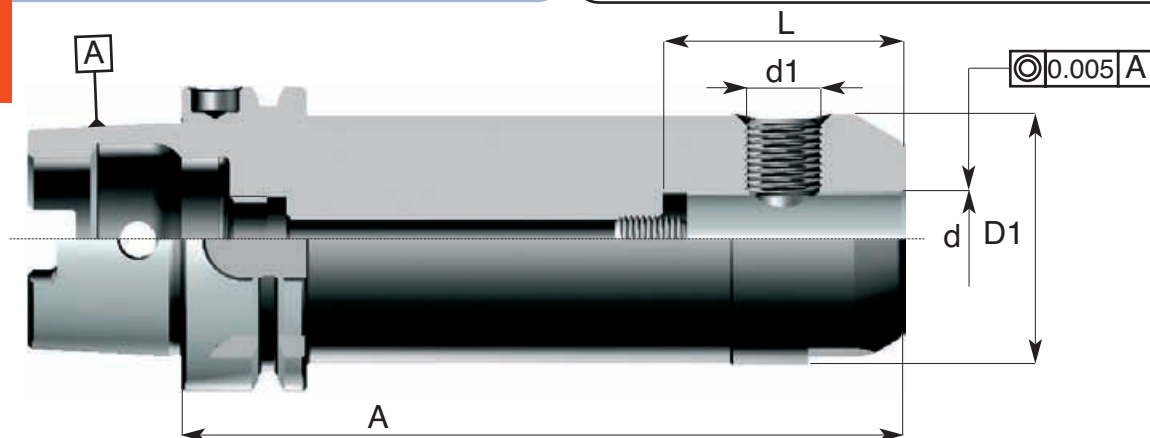


DIN 69893/1-A

Prebilanciato
 Prebalanced
 G6.3 / 8000rpm

ART: HSKA.208

1.
8



Codice di ord Code	HSKA	d H5	A	D1	L	d1	Grano di serraggio Clamping screw
HSKA.208.63.0064	HSK 63	6	150	25	38	M6X10	208.00.0060
HSKA.208.63.0084	HSK 63	8	150	28	38	M8X10	208.00.0080
HSKA.208.63.0104	HSK 63	10	150	35	45	M10X12	208.00.0100
HSKA.208.63.0124	HSK 63	12	150	42	50	M12X1.5X16	208.00.0120
HSKA.208.63.0144	HSK 63	14	150	44	50	M12X1.5X16	208.00.0120
HSKA.208.63.0164	HSK 63	16	150	48	50	M14X1.5X16	208.00.0140
HSKA.208.63.0204	HSK 63	20	150	52	55	M16X1.5X16	208.00.0160
HSKA.208.100.0062	HSK 100	6	150	25	38	M6X10	208.00.0060
HSKA.208.100.0082	HSK 100	8	150	28	38	M8X10	208.00.0080
HSKA.208.100.0102	HSK 100	10	150	35	45	M10X12	208.00.0100
HSKA.208.100.0122	HSK 100	12	150	42	50	M12X1.5X16	208.00.0120
HSKA.208.100.0142	HSK 100	14	150	44	50	M12X1.5X16	208.00.0120
HSKA.208.100.0162	HSK 100	16	150	48	50	M14X1.5X16	208.00.0140
HSKA.208.100.0202	HSK 100	20	150	52	55	M16X1.5X16	208.00.0160
HSKA.208.100.0252	HSK 100	25	150	65	60	M18X1.5X20	208.00.0180
HSKA.208.100.0322	HSK 100	32	150	72	65	M20X1.5X20	208.00.0200
HSKA.208.100.0402	HSK 100	40	150	80	75	M20X1.5X20	208.00.0200



ACCESSORI PER MACCHINE UTENSILI

Portafrese per calettamento a caldo secondo DIN 69882-8

Shrink-fit chucks DIN 69882-8

Schrumpfutter DIN 69882-8

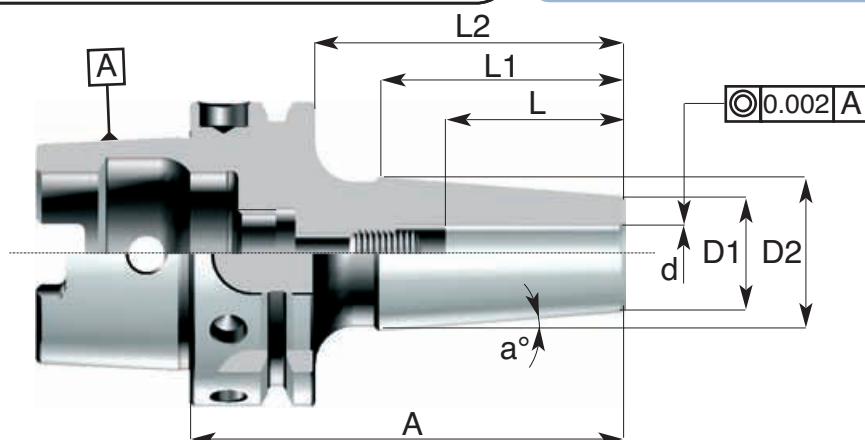
Mandrins de frettage DIN 69882-8



Bilanciatura fine
Fine balancing

DIN 69893/1-A

ART: HSKA.206



1.
9



Codice di ord Code	HSKA-A	d h6	D1	D2	a°	L	L1	L2	A	bilanciatura balancing
HSKA.206.50.0030	HSK 50	3	9	16	4.5°	15	44	54	80	G6.3/2000RPM
HSKA.206.50.0040	HSK 50	4	9	16	4.5°	15	44	54	80	G6.3/2000RPM
HSKA.206.50.0050	HSK 50	5	12	19	4.5°	20	44	54	80	G6.3/2000RPM
HSKA.206.50.0060	HSK 50	6	12	19	4.5°	28	44	54	80	G6.3/2000RPM
HSKA.206.50.0080	HSK 50	8	15	22	4.5°	34	44	54	80	G6.3/2000RPM
HSKA.206.50.0100	HSK 50	10	19	27	4.5°	37	51	59	90	G6.3/2000RPM
HSKA.206.50.0120	HSK 50	12	24	32	4.5°	37	51	64	90	G6.3/1500RPM
HSKA.206.63.0030	HSK 63	3	9	16	4.5°	15	44	54	80	G6.3/1500RPM
HSKA.206.63.0040	HSK 63	4	9	16	4.5°	15	44	54	80	G6.3/1500RPM
HSKA.206.63.0050	HSK 63	5	12	19	4.5°	20	44	54	80	G6.3/1500RPM
HSKA.206.63.0060	HSK 63	6	12	19	4.5°	28	44	54	80	G6.3/1500RPM
HSKA.206.63.0080	HSK 63	8	15	22	4.5°	34	44	54	80	G6.3/1500RPM
HSKA.206.63.0100	HSK 63	10	19	27	4.5°	37	51	59	85	G6.3/1500RPM
HSKA.206.63.0120	HSK 63	12	24	32	4.5°	37	51	64	90	G6.3/1500RPM
HSKA.206.63.0140	HSK 63	14	27	34	4.5°	40	44	64	90	G6.3/1500RPM
HSKA.206.63.0160	HSK 63	16	27	34	4.5°	40	44	69	95	G6.3/1500RPM
HSKA.206.63.0200	HSK 63	20	33	42	4.5°	45	57	74	100	G6.3/1500RPM
HSKA.206.100.0030	HSK 100	3	9	16	4.5°	15	44	56	85	G6.3/1500RPM
HSKA.206.100.0040	HSK 100	4	9	16	4.5°	15	44	56	85	G6.3/1500RPM
HSKA.206.100.0050	HSK 100	5	12	19	4.5°	20	44	56	85	G6.3/1500RPM
HSKA.206.100.0060	HSK 100	6	12	19	4.5°	28	44	56	85	G6.3/1500RPM
HSKA.206.100.0080	HSK 100	8	15	22	4.5°	34	44	56	85	G6.3/1500RPM
HSKA.206.100.0100	HSK 100	10	19	27	4.5°	37	51	61	90	G6.3/1500RPM
HSKA.206.100.0120	HSK 100	12	24	32	4.5°	37	51	66	95	G6.3/1500RPM
HSKA.206.100.0140	HSK 100	14	27	34	4.5°	40	44	66	95	G6.3/1500RPM
HSKA.206.100.0160	HSK 100	16	27	34	4.5°	40	44	71	100	G6.3/1500RPM
HSKA.206.100.0200	HSK 100	20	33	42	4.5°	45	57	76	105	G6.3/1500RPM

1. MANDRINI a cono HSKA DIN 69893/1

TOOL HOLDERS with HSKA cone DIN 69893/1



Portafrese per calettamento a caldo secondo DIN 69882-8

Shrink-fit chucks DIN 69882-8

Schrumpfutter DIN 69882-8

Mandrins de frettage DIN 69882-8

ACCESSORI PER MACCHINE UTENSILI

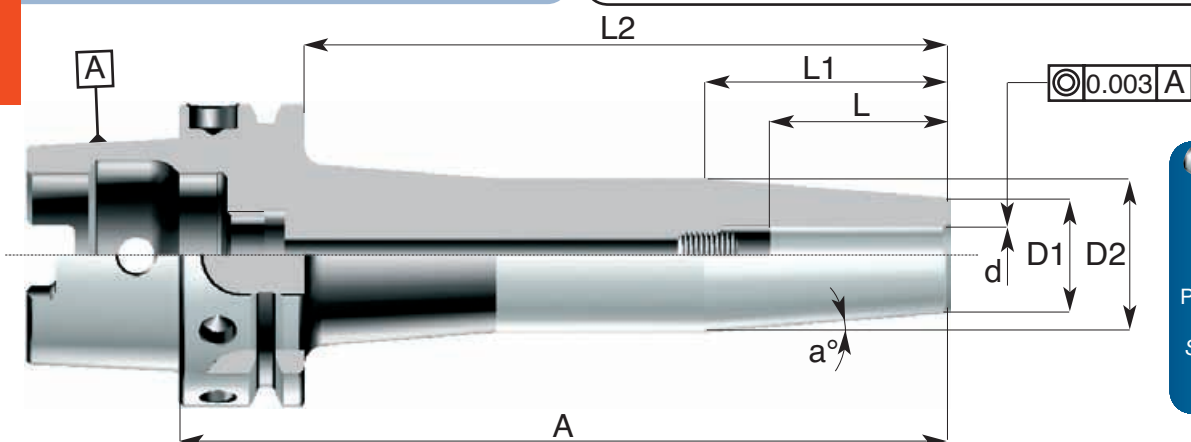


DIN 69893/1-A

Bilanciatura fine
Fine balancing

ART: HSKA.206

1.
10



Codice di ord Code	HSKA-A	d h6	D1	D2	a°	L	L1	L2	A	bilanciatura balancing
HSKA.206.63.0032	HSK 63	3	9	16	4.5°	15	44	134	160	G6.3/2000RPM
HSKA.206.63.0042	HSK 63	4	9	16	4.5°	15	44	134	160	G6.3/2000RPM
HSKA.206.63.0052	HSK 63	5	12	19	4.5°	20	44	134	160	G6.3/2000RPM
HSKA.206.63.0062	HSK 63	6	12	22	4.5°	28	44	134	160	G6.3/2000RPM
HSKA.206.63.0082	HSK 63	8	15	23	4.5°	34	44	134	160	G6.3/2000RPM
HSKA.206.63.0102	HSK 63	10	19	27	4.5°	37	51	134	160	G6.3/2000RPM
HSKA.206.63.0122	HSK 63	12	24	32	4.5°	37	51	134	160	G6.3/1500RPM
HSKA.206.63.0142	HSK 63	14	27	34	4.5°	40	44	134	160	G6.3/1500RPM
HSKA.206.63.0162	HSK 63	16	27	34	4.5°	40	44	134	160	G6.3/1500RPM
HSKA.206.63.0202	HSK 63	20	33	42	4.5°	45	57	134	160	G6.3/1500RPM
HSKA.206.100.0032	HSK 100	3	9	16	4.5°	15	44	131	160	G6.3/1500RPM
HSKA.206.100.0042	HSK 100	4	9	16	4.5°	15	44	131	160	G6.3/1500RPM
HSKA.206.100.0052	HSK 100	5	12	22	4.5°	20	44	131	160	G6.3/1500RPM
HSKA.206.100.0062	HSK 100	6	12	22	4.5°	28	44	131	160	G6.3/1500RPM
HSKA.206.100.0082	HSK 100	8	15	23	4.5°	34	44	131	160	G6.3/1500RPM
HSKA.206.100.0102	HSK 100	10	19	27	4.5°	37	51	131	160	G6.3/1500RPM
HSKA.206.100.0122	HSK 100	12	24	32	4.5°	37	51	131	160	G6.3/1500RPM
HSKA.206.100.0142	HSK 100	14	27	34	4.5°	40	44	131	160	G6.3/1500RPM
HSKA.206.100.0162	HSK 100	16	27	34	4.5°	40	44	131	160	G6.3/1500RPM
HSKA.206.100.0202	HSK 100	20	33	42	4.5°	45	57	131	160	G6.3/1500RPM

ACCESSORI PER MACCHINE UTENSILI

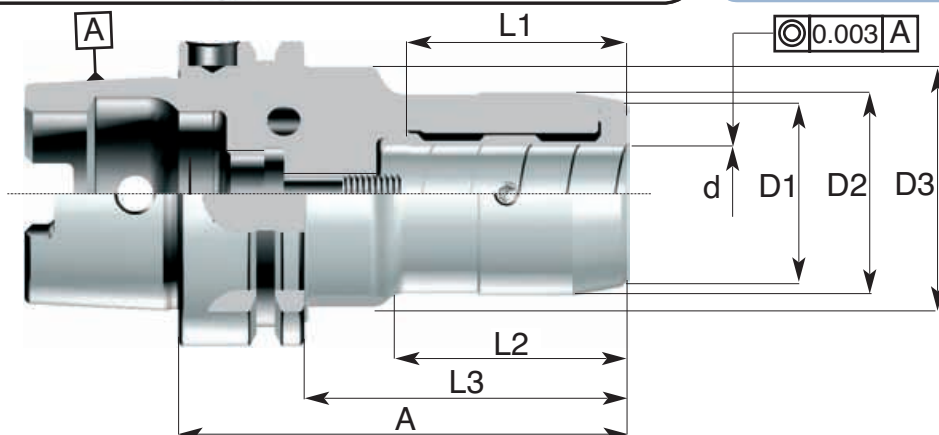
Mandrini a chiusura idraulica HYDRO-DELTA
 Hydraulic clamping chucks HYDRO DELTA
 Dehnspannfutter HYDRO DELTA
 Mandrins expansibles HYDRO DELTA



Bilanciatura fine
 Fine balancing

DIN 69893/1-A

ART:HSKA.207



1.
11

Codice di ord Code	HSKA	d	D1	D2	D3	L1	L2	L3	A	bilanciatura balancing
HSKA .207.50.0060	HSK 50	6	22	26	42	35	21	46	72	G6.3/2000RPM
HSKA .207.50.0080	HSK 50	8	24	28	42	35	21	53	79	G6.3/2000RPM
HSKA .207.50.0100	HSK 50	10	26	30	42	35	32	57	83	G6.3/2000RPM
HSKA .207.50.0120	HSK 50	12	28	32	42	44	43	65	91	G6.3/2000RPM
HSKA .207.50.0160	HSK 50	16	34	38	42	47	40	67	93	G6.3/2000RPM
HSKA .207.50.0200	HSK 50	20	38	42	42	49	40	67	93	G6.3/2000RPM
HSKA .207.63.0060	HSK 63	6	22	26	53	35	21	46	72	G6.3/1500RPM
HSKA .207.63.0080	HSK 63	8	24	28	53	35	21	53	79	G6.3/1500RPM
HSKA .207.63.0100	HSK 63	10	26	30	53	35	32	57	83	G6.3/1500RPM
HSKA .207.63.0120	HSK 63	12	28	32	53	44	43	65	91	G6.3/1500RPM
HSKA .207.63.0160	HSK 63	16	34	38	53	47	40	67	93	G6.3/1500RPM
HSKA .207.63.0200	HSK 63	20	38	42	53	49	40	67	93	G6.3/1500RPM
HSKA .207.63.0250	HSK 63	25	46	50	53	55	50	80	106	G6.3/1500RPM
HSKA .207.63.0320	HSK 63	32	52	58	53	62	55	85	111	G6.3/1500RPM
HSKA .207.80.0060	HSK 80	6	22	26	55	35	21	46	72	G6.3/1500RPM
HSKA .207.80.0080	HSK 80	8	24	28	55	35	21	53	79	G6.3/1500RPM
HSKA .207.80.0100	HSK 80	10	26	30	55	35	32	57	83	G6.3/1500RPM
HSKA .207.80.0120	HSK 80	12	28	32	55	44	43	65	91	G6.3/1500RPM
HSKA .207.80.0160	HSK 80	16	34	38	55	47	40	67	93	G6.3/1500RPM
HSKA .207.80.0200	HSK 80	20	38	42	60	49	40	67	93	G6.3/1500RPM
HSKA .207.80.0250	HSK 80	25	46	50	60	55	50	80	106	G6.3/1500RPM
HSKA .207.80.0320	HSK 80	32	52	58	60	62	55	85	111	G6.3/1500RPM
HSKA .207.100.0060	HSK 100	6	22	26	55	35	21	46	72	G6.3/1500RPM
HSKA .207.100.0080	HSK 100	8	24	28	55	35	21	53	79	G6.3/1500RPM
HSKA .207.100.0100	HSK 100	10	26	30	55	35	32	57	83	G6.3/1500RPM
HSKA .207.100.0120	HSK 100	12	28	32	55	44	43	65	91	G6.3/1500RPM
HSKA .207.100.0160	HSK 100	16	34	38	55	47	40	67	93	G6.3/1500RPM
HSKA .207.100.0200	HSK 100	20	38	42	70	49	40	67	93	G6.3/1500RPM
HSKA .207.100.0250	HSK 100	25	46	50	70	55	50	80	106	G6.3/1500RPM
HSKA .207.100.0320	HSK 100	32	52	58	70	62	55	85	111	G6.3/1500RPM

1. MANDRINI a cono HSKA DIN 69893/1

TOOL HOLDERS with HSKA cone DIN 69893/1



Mandrini a chiusura idraulica HYDRO-DELTA

Hydraulic clamping chucks HYDRO DELTA

Dehnspannfutter HYDRO DELTA

Mandrins expansibles HYDRO DELTA

ACCESSORI PER MACCHINE UTENSILI

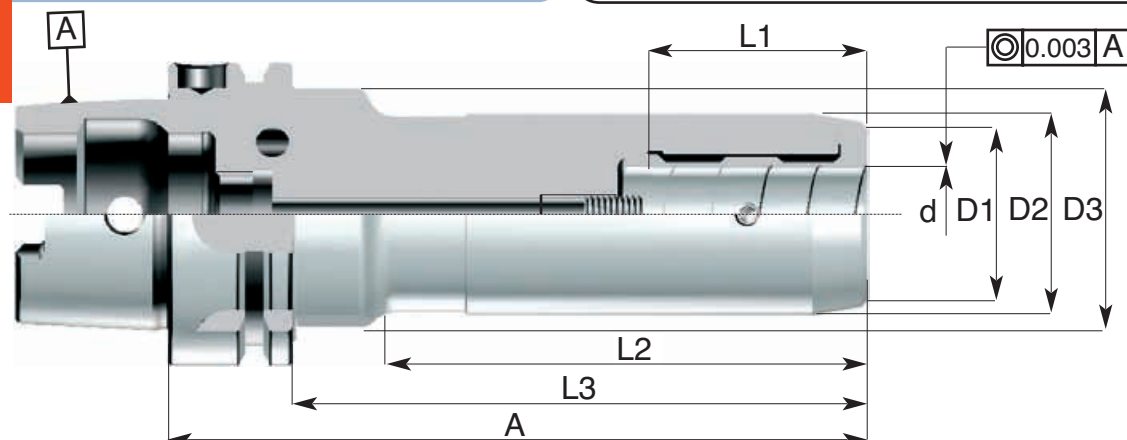


DIN 69893/1-A

Bilanciatura fine
Fine balancing

ART: HSKA.207

1.
12



Codice di ord Code	HSKA-A	d	D1	D2	D3	L1	L2	L3	A	bilanciatura balancing
HSKA.207.63.0062	HSK 63	6	22	26	53	35	99	124	150	G6.3/15000RPM
HSKA.207.63.0064	HSK 63	6	22	26	53	35	149	174	200	G6.3/15000RPM
HSKA.207.63.0082	HSK 63	8	24	28	53	35	99	124	150	G6.3/15000RPM
HSKA.207.63.0084	HSK 63	8	24	28	53	35	149	174	200	G6.3/15000RPM
HSKA.207.63.0102	HSK 63	10	26	30	53	35	99	124	150	G6.3/15000RPM
HSKA.207.63.0104	HSK 63	10	26	30	53	35	149	174	200	G6.3/15000RPM
HSKA.207.63.0122	HSK 63	12	28	32	53	44	99	124	150	G6.3/15000RPM
HSKA.207.63.0124	HSK 63	12	28	32	53	44	149	174	200	G6.3/15000RPM
HSKA.207.63.0162	HSK 63	16	34	38	53	47	99	124	150	G6.3/15000RPM
HSKA.207.63.0164	HSK 63	16	34	38	53	47	149	174	200	G6.3/15000RPM
HSKA.207.63.0202	HSK 63	20	38	42	53	49	99	124	150	G6.3/15000RPM
HSKA.207.63.0204	HSK 63	20	38	42	53	49	149	174	200	G6.3/15000RPM

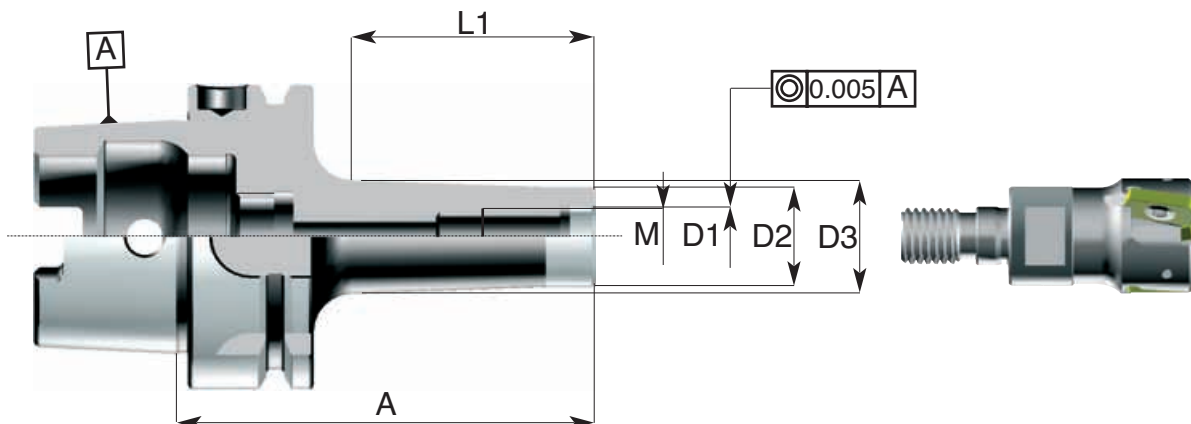


Bilanciatura fine
 Fine balancing

DIN 69893/1-A

ART: HSKA.267

1.
13



Codice di ord Code	HSKA	M	D1	D2	D3	L1	A	bilanciatura balancing
HSKA.267.40.0060	HSK 40	M6	6.5	9.7	13	25	53	G6.3/20000RPM
HSKA.267.40.0062	HSK 40	M6	6.5	9.7	20	50	78	G6.3/20000RPM
HSKA.267.40.0064	HSK 40	M6	6.5	9.7	23	75	103	G6.3/20000RPM
HSKA.267.40.0080	HSK 40	M8	8.5	12.7	15	25	53	G6.3/20000RPM
HSKA.267.40.0082	HSK 40	M8	8.5	12.7	23	50	78	G6.3/20000RPM
HSKA.267.40.0084	HSK 40	M8	8.5	12.7	23	75	103	G6.3/20000RPM
HSKA.267.40.0086	HSK 40	M8	8.5	12.7	25	100	128	G6.3/20000RPM
HSKA.267.40.0100	HSK 40	M10	10.5	17.7	20	25	53	G6.3/20000RPM
HSKA.267.40.0102	HSK 40	M10	10.5	17.7	25	50	78	G6.3/20000RPM
HSKA.267.40.0104	HSK 40	M10	10.5	17.7	28	75	103	G6.3/20000RPM
HSKA.267.40.0106	HSK 40	M10	10.5	17.7	30	100	128	G6.3/20000RPM
HSKA.267.50.0060	HSK 50	M6	6.5	9.7	13	25	59	G6.3/20000RPM
HSKA.267.50.0062	HSK 50	M6	6.5	9.7	20	50	84	G6.3/20000RPM
HSKA.267.50.0064	HSK 50	M6	6.5	9.7	23	75	109	G6.3/20000RPM
HSKA.267.50.0080	HSK 50	M8	8.5	12.7	15	25	59	G6.3/20000RPM
HSKA.267.50.0082	HSK 50	M8	8.5	12.7	23	50	84	G6.3/20000RPM
HSKA.267.50.0084	HSK 50	M8	8.5	12.7	23	75	109	G6.3/20000RPM
HSKA.267.50.0086	HSK 50	M8	8.5	12.7	25	100	134	G6.3/20000RPM
HSKA.267.50.0100	HSK 50	M10	10.5	17.7	20	25	59	G6.3/20000RPM
HSKA.267.50.0102	HSK 50	M10	10.5	17.7	25	50	84	G6.3/20000RPM
HSKA.267.50.0104	HSK 50	M10	10.5	17.7	28	75	109	G6.3/20000RPM
HSKA.267.50.0106	HSK 50	M10	10.5	17.7	30	100	134	G6.3/20000RPM
HSKA.267.50.0120	HSK 50	M12	12.5	20.7	24	25	59	G6.3/20000RPM
HSKA.267.50.0122	HSK 50	M12	12.5	20.7	24	50	84	G6.3/20000RPM
HSKA.267.50.0124	HSK 50	M12	12.5	20.7	31	75	109	G6.3/20000RPM
HSKA.267.50.0160	HSK 50	M16	17	28.7	34	25	59	G6.3/20000RPM
HSKA.267.50.0162	HSK 50	M16	17	28.7	34	50	84	G6.3/20000RPM
HSKA.267.50.0164	HSK 50	M16	17	28.7	34	75	109	G6.3/20000RPM

1. MANDRINI a cono HSKA DIN 69893/1

TOOL HOLDERS with HSKA cone DIN 69893/1



Mandrini portatestine filettate

Chucks for threaded heads
Mandrins pour têtes filetées
Spannfutter für Gewindeköpfe

ACCESSORI PER MACCHINE UTENSILI

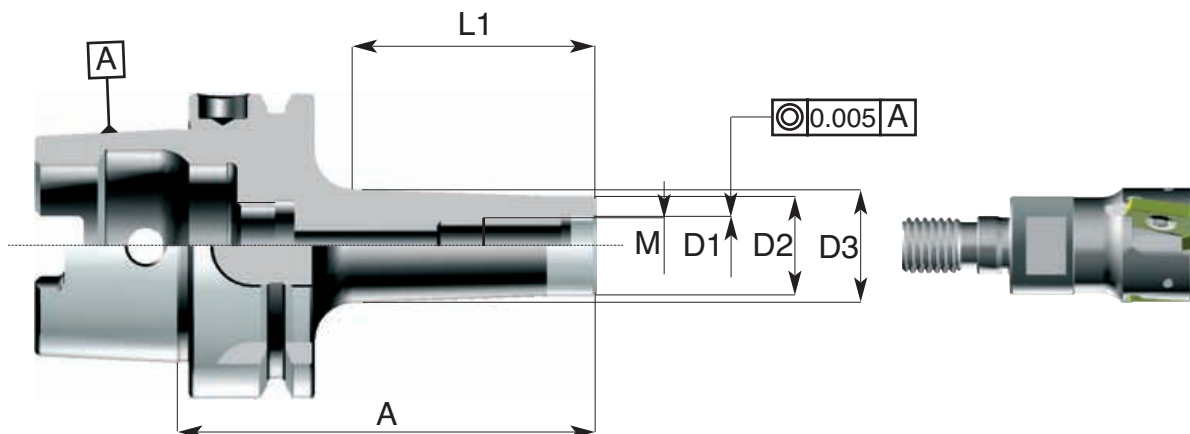


DIN 69893/1-A

Bilanciatura fine
Fine balancing

ART: HSKA.267

14



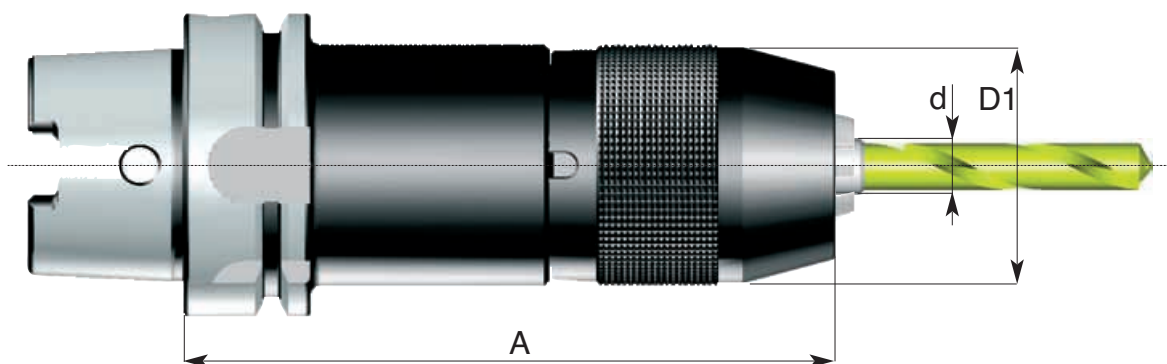
Codice di ord Code	HSKA	M	D1	D2	D3	L1	A	bilanciatura balancing
HSKA.267.63.0060	HSK 63	M6	6.5	9.7	13	25	59	G6.3/15000RPM
HSKA.267.63.0062	HSK 63	M6	6.5	9.7	20	50	84	G6.3/15000RPM
HSKA.267.63.0064	HSK 63	M6	6.5	9.7	23	75	109	G6.3/15000RPM
HSKA.267.63.0080	HSK 63	M8	8.5	12.7	15	25	59	G6.3/15000RPM
HSKA.267.63.0082	HSK 63	M8	8.5	12.7	23	50	84	G6.3/15000RPM
HSKA.267.63.0084	HSK 63	M8	8.5	12.7	23	75	109	G6.3/15000RPM
HSKA.267.63.0086	HSK 63	M8	8.5	12.7	25	100	134	G6.3/15000RPM
HSKA.267.63.0100	HSK 63	M10	10.5	17.7	20	25	59	G6.3/15000RPM
HSKA.267.63.0102	HSK 63	M10	10.5	17.7	25	50	84	G6.3/15000RPM
HSKA.267.63.0104	HSK 63	M10	10.5	17.7	28	75	109	G6.3/15000RPM
HSKA.267.63.0106	HSK 63	M10	10.5	17.7	30	100	134	G6.3/15000RPM
HSKA.267.63.0120	HSK 63	M12	12.5	20.7	24	25	59	G6.3/15000RPM
HSKA.267.63.0122	HSK 63	M12	12.5	20.7	24	50	84	G6.3/15000RPM
HSKA.267.63.0124	HSK 63	M12	12.5	20.7	31	75	109	G6.3/15000RPM
HSKA.267.63.0126	HSK 63	M12	12.5	20.7	31	100	134	G6.3/15000RPM
HSKA.267.63.0160	HSK 63	M16	17	28.7	34	25	59	G6.3/15000RPM
HSKA.267.63.0162	HSK 63	M16	17	28.7	34	50	84	G6.3/15000RPM
HSKA.267.63.0164	HSK 63	M16	17	28.7	34	75	109	G6.3/15000RPM
HSKA.267.63.0166	HSK 63	M16	17	28.7	39	100	134	G6.3/15000RPM

ACCESSORI PER MACCHINE UTENSILI

Mandrini portapunte integrali
 Integral drill chucks
 Kurzbohrfutter
 Mandrins porte-forets intégraux

DIN 69893/1-A

ART: HSKA.221



1.
15

Codice di ord Code	HSK-A	A	D	capacità d Capacity range "d"
HSKA.221.50.1301	HSK 50	142	50	1-13
HSKA.221.63.1301	HSK 63	147	50	1-13
HSKA.221.63.1603	HSK 63	150	57	3-16
HSKA.221.100.1301	HSK 100	154	50	1-13
HSKA.221.100.1603	HSK 100	160	57	3-16

ADATTI SOLO A ROTAZIONE DESTRA
 SUITABLE FOR RIGHT ROTATION ONLY

Forniti completi di chiave
 Supplied together with key

1. MANDRINI a cono HSKA DIN 69893/1

TOOL HOLDERS with HSKA cone DIN 69893/1



Riduzioni da cono HSK a cono Morse DIN 6364 B per frese con vite interna
 Morse taper adaptors sleeves for cutters with internal screw - DIN 6364 B
 Zwischenhülsen für Morsekegel mit Auzugsgewinde - DIN 6364 B
 Douilles de réduction à cône Morse pour fraises avec vis - DIN 6364 B

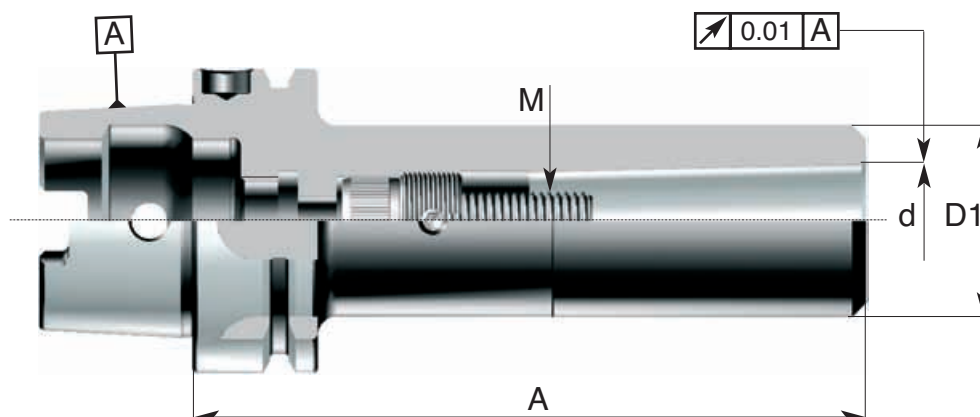
ACCESSORI PER MACCHINE UTENSILI



DIN 69893/1-A

ART: HSKA.261

1.
16



Codice di ord Code	HSKA-A	Cono Morse SK	d	A	D1	M	Vite Screw	Ghiera Nut
HSKA.261.40.0100	HSK 40	Morse 1	12.065	90	25	M6	261.00.0625	261.12.0100
HSKA.261.40.0200	HSK 40	Morse 2	17.780	100	32	M10	261.00.1030.B	261.15.0200
HSKA.261.50.0100	HSK 50	Morse 1	12.065	100	25	M6	261.00.0625	261.16.1100
HSKA.261.50.0200	HSK 50	Morse 2	17.780	120	32	M10	261.00.1030.B	261.16.1100
HSKA.261.50.0300	HSK 50	Morse 3	23.825	140	40	M12	261.00.1240.B	261.00.1220
HSKA.261.63.0100	HSK 63	Morse 1	12.065	100	25	M6	261.00.0630	261.00.0612
HSKA.261.63.0200	HSK 63	Morse 2	17.780	120	32	M10	261.00.1030.E	261.00.1018
HSKA.261.63.0300	HSK 63	Morse 3	23.825	140	40	M12	261.00.1240.E	261.00.1220
HSKA.261.63.0400	HSK 63	Morse 4	31.267	160	48	M16	261.00.1650.E	261.00.1626
HSKA.261.80.0100	HSK 80	Morse 1	12.065	110	25	M6	261.00.0630	261.00.1018
HSKA.261.80.0200	HSK 80	Morse 2	17.780	120	32	M10	261.00.1030.E	261.00.1018
HSKA.261.80.0300	HSK 80	Morse 3	23.825	140	40	M12	261.00.1240.E	261.00.1220
HSKA.261.80.0400	HSK 80	Morse 4	31.267	170	48	M16	261.00.1650.E	261.00.1626
HSKA.261.80.0500	HSK 80	Morse 5	44.399	200	63	M20	261.00.2050.E	261.00.2033
HSKA.261.100.0100	HSK 100	Morse 1	12.065	110	25	M6	261.00.0645	261.00.1018
HSKA.261.100.0200	HSK 100	Morse 2	17.780	120	32	M10	261.00.1030	261.00.1018
HSKA.261.100.0300	HSK 100	Morse 3	23.825	150	40	M12	261.00.1240.E	261.00.1220
HSKA.261.100.0400	HSK 100	Morse 4	31.267	170	48	M16	261.00.1645.B.E	261.00.1626
HSKA.261.100.0500	HSK 100	Morse 5	44.399	200	63	M20	261.00.2050.B.E	261.00.2033



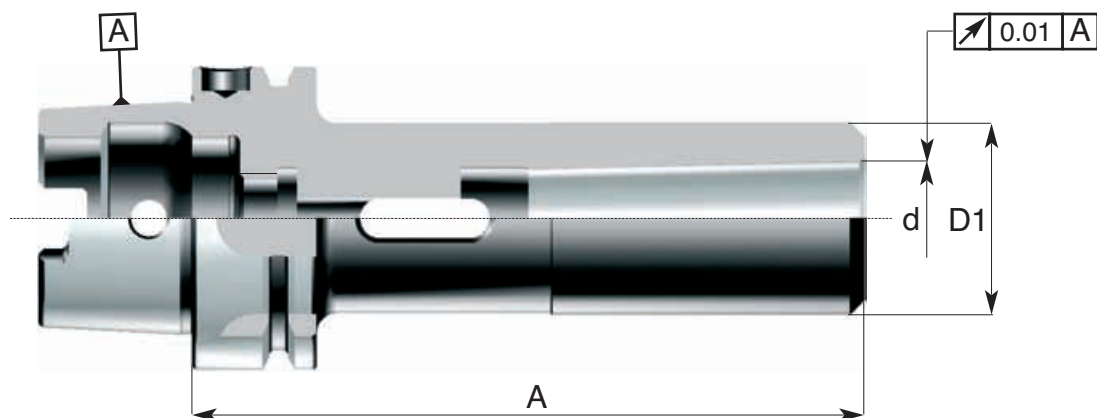
ACCESSORI PER MACCHINE UTENSILI



Riduzioni da cono HSK a cono Morse per punte
 Morse taper adaptors sleeves for drills with driving shank
 Zwischenhülsen für Morsekegel mit Austreibblappen
 Douilles de réduction à cône Morse pour forets avec dents d'entraînement

DIN 69893/1-A

ART: HSKA.262



1.
17

Codice di ord Code	HSKA	Cono Morse SK	d	A	D1
HSKA.262.40.0100	HSK 40	Morse 1	12.065	95	25
HSKA.262.40.0200	HSK 40	Morse 2	17.780	110	32
HSKA.262.50.0100	HSK 50	Morse 1	12.065	100	25
HSKA.262.50.0200	HSK 50	Morse 2	17.780	120	32
HSKA.262.50.0300	HSK 50	Morse 3	23.825	140	40
HSKA.262.63.0100	HSK 63	Morse 1	12.065	100	25
HSKA.262.63.0200	HSK 63	Morse 2	17.780	120	32
HSKA.262.63.0300	HSK 63	Morse 3	23.825	140	40
HSKA.262.63.0400	HSK 63	Morse 4	31.267	160	48
HSKA.262.80.0100	HSK 80	Morse 1	12.065	110	25
HSKA.262.80.0200	HSK 80	Morse 2	17.780	120	32
HSKA.262.80.0300	HSK 80	Morse 3	23.825	140	40
HSKA.262.80.0400	HSK 80	Morse 4	31.267	170	48
HSKA.262.80.0500	HSK 80	Morse 5	44.399	200	63
HSKA.262.100.0100	HSK 100	Morse 1	12.065	110	25
HSKA.262.100.0200	HSK 100	Morse 2	17.780	120	32
HSKA.262.100.0300	HSK 100	Morse 3	23.825	150	40
HSKA.262.100.0400	HSK 100	Morse 4	31.267	170	48
HSKA.262.100.0500	HSK 100	Morse 5	44.399	200	63

1. MANDRINI a cono HSKA DIN 69893/1

TOOL HOLDERS with HSKA cone DIN 69893/1



Barre semifinite con tratto cilindrico privo di cementazione per esecuzioni speciali

Unfinished taper-shank blanks for special applications

Rohlinge für spezielle Anwendungen

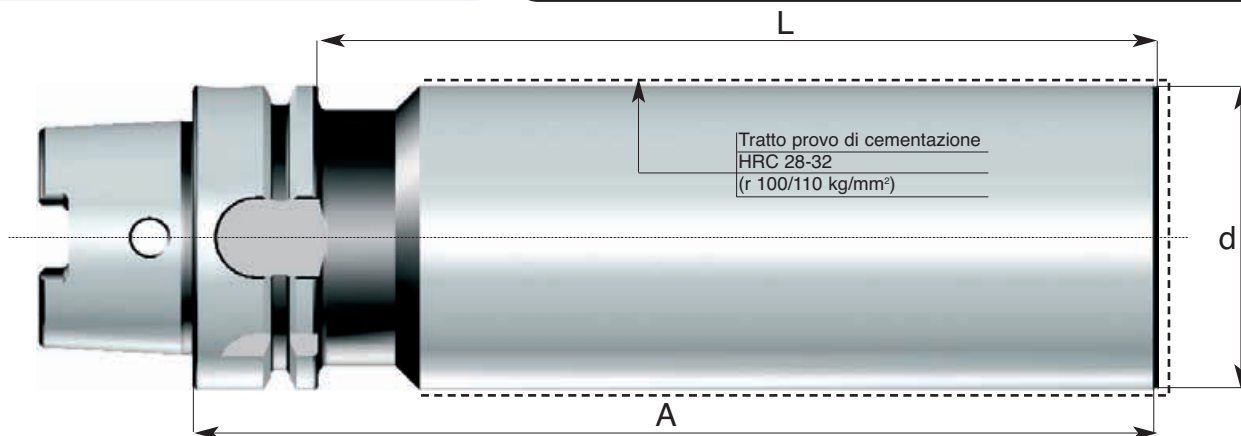
Ebauches pour applications spéciales

ACCESSORI PER MACCHINE UTENSILI



DIN 69893/1-A

ART:HSKA.424



1.
18

Codice di ord Code	SK	d	A	L
HSKA.424.50.0500	HSK 50	50	176	150
HSKA.424.63.0632	HSK 63	63	226	200
HSKA.424.63.0634	HSK 63	63	326	300
HSKA.424.80.0802	HSK 80	80	226	250
HSKA.424.100.1000	HSK 100	100	279	250

ACCESSORI PER MACCHINE UTENSILI

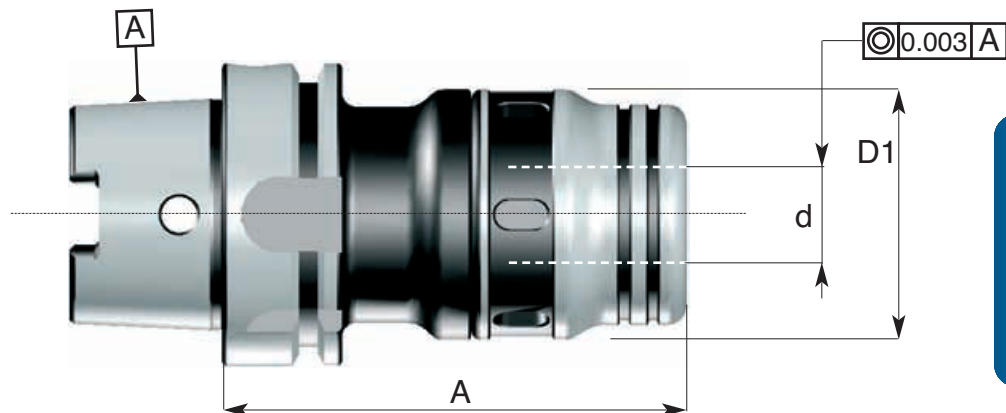
Mandrini a forte serraggio
 High clamping chucks
 Kraftspannfutter
 Mandrins à fort serrage



Prebilanciato
 Prebalanced
 G6.3 / 8000rpm

DIN 69893/1-A

ART: HSKA.603



1.
19



Codice di ord Code	HSKA	d1	D1	A	Boccola di riduzione Reduction bushes
HSKA.603.40.0200	HSK 40	20	54	100	239.20...
HSKA.603.50.0200	HSK 50	20	54	107	239.20...
HSKA.603.63.0200	HSK 63	20	54	107	239.20...
HSKA.603.63.0320	HSK 63	32	72	120	239.32...
HSKA.603.100.0200	HSK 100	20	54	110	239.20...
HSKA.603.100.0320	HSK 100	32	72	123	239.32...

1. MANDRINI a cono HSKA DIN 69893/1

TOOL HOLDERS with HSKA cone DIN 69893/1



Mandrini portapinzine ER DIN 6499 - ghiera standard

Collet chucks ER DIN 6499 - standard nut

Spannzangenhalter ER DIN 6499 - standard Spannmutter

Mandrins porte-pinces ER DIN 6499 - écrou standard

ACCESSORI PER MACCHINE UTENSILI

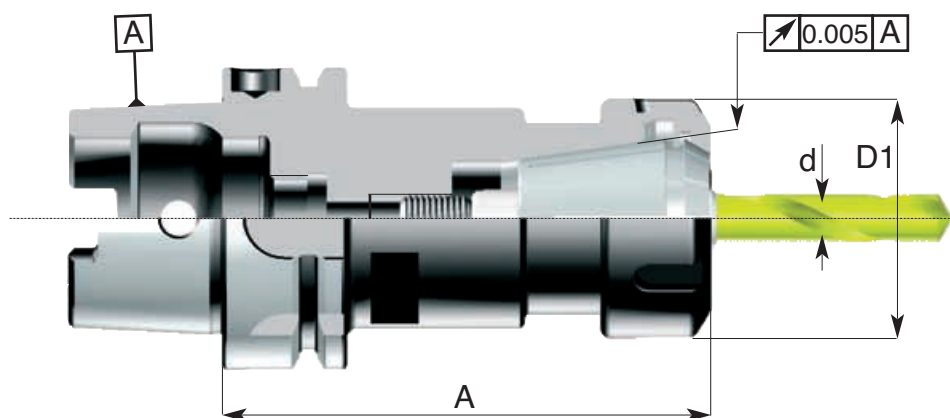


DIN 69893/1-A

Prebilanciato
Prebalanced
G6.3 / 8000rpm

ART: HSKA.607
ghiera standard / standard nut

1.
20



Codice di ord Code	HSKA	ER	A	D1	Cap. di chiusura Pinza "d" Capacity range "d"	Ghiera Nut
HSKA.607.40.0250	HSK 40	ER 25	80	42	1-16	245.32.ER25
HSKA.607.40.0252	HSK 40	ER 25	120	42	1-16	245.32.ER25
HSKA.607.50.0160.C	HSK 50	ER 16	70	28	0,5-10	245.22.ER16
HSKA.607.50.0160	HSK 50	ER 16	100	28	0,5-10	245.22.ER16
HSKA.607.50.0250.C	HSK 50	ER 25	70	42	1-16	245.32.ER25
HSKA.607.50.0250	HSK 50	ER 25	100	42	1-16	245.32.ER25
HSKA.607.50.0320.C	HSK 50	ER 32	70	50	1-20	245.40.ER32
HSKA.607.50.0320	HSK 50	ER 32	100	50	1-20	245.40.ER32
HSKA.607.50.0322	HSK 50	ER 32	150	50	1-20	245.40.ER32
HSKA.607.50.0400	HSK 50	ER 40	100	63	2-30	245.50.ER40
HSKA.607.63.0160	HSK 63	ER 16	100	28	0,5-10	245.22.ER16
HSKA.607.63.0250.C	HSK 63	ER 25	70	42	1-16	245.32.ER25
HSKA.607.63.0250	HSK 63	ER 25	100	42	1-16	245.32.ER25
HSKA.607.63.0252	HSK 63	ER 25	150	42	1-16	245.32.ER25
HSKA.607.63.0320	HSK 63	ER 32	100	50	1-20	245.40.ER32
HSKA.607.63.0322	HSK 63	ER 32	150	50	1-20	245.40.ER32
HSKA.607.63.0324	HSK 63	ER 32	200	50	2-20	245.40.ER32
HSKA.607.63.0400	HSK 63	ER 40	100	63	2-30	245.50.ER40
HSKA.607.63.0402	HSK 63	ER 40	150	63	2-30	245.50.ER40
HSKA.607.80.0160	HSK 80	ER 16	100	28	0,5-10	245.22.ER16
HSKA.607.80.0250	HSK 80	ER 25	100	42	1-16	245.32.ER25
HSKA.607.80.0320	HSK 80	ER 32	100	50	1-20	245.40.ER32
HSKA.607.80.0400	HSK 80	ER 40	120	63	2-30	245.50.ER40
HSKA.607.100.0160	HSK 100	ER 16	120	28	0,5-10	245.22.ER16
HSKA.607.100.0250	HSK 100	ER 25	120	42	1-16	245.32.ER25
HSKA.607.100.0252	HSK 100	ER 25	150	42	1-16	245.32.ER25
HSKA.607.100.0320	HSK 100	ER 32	120	50	1-20	245.40.ER32
HSKA.607.100.0322	HSK 100	ER 32	150	50	1-20	245.40.ER32
HSKA.607.100.0400	HSK 100	ER 40	120	63	2-30	245.50.ER40

ACCESSORI PER MACCHINE UTENSILI

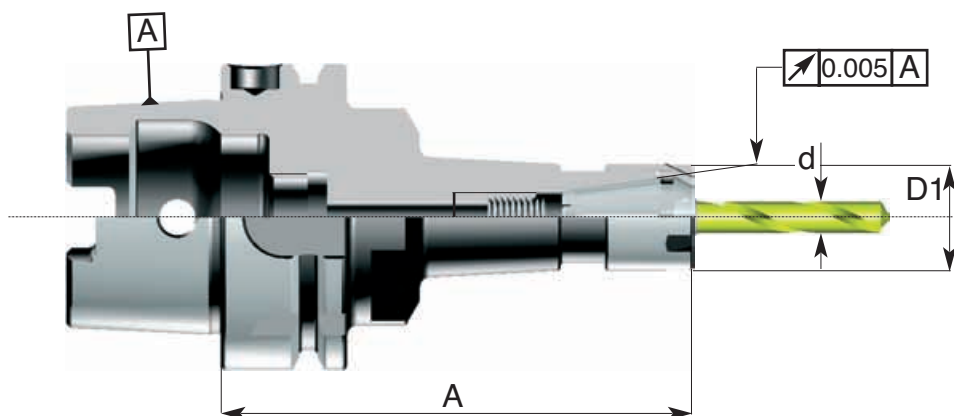


Mandrini portapinze ER DIN 6499 - ghiera mini
 Collet chucks ER DIN 6499 - mini nut
 Spannzangenhalter ER DIN 6499 - mini Spannmutter
 Mandrins porte-pinces ER DIN 6499 - écrou mini

Prebilanciato
 Prebalanced
 G6.3 / 8000rpm

DIN 69893/1-A

ART: HSKA.607
 ghiera mini/ mini nut



Codice di ord Code	HSK-A	ER	A	D1	Cap. di chiusura Pinza "d" Capacity range "d"	Ghiera Nut
HSKA.607.32.0112M	HSK 32	ER 11	90	16	0,5-7	245.13.ER11M
HSKA.607.32.0160M	HSK 32	ER 16	75	22	0,5-10	245.19.ER16M
HSKA.607.32.0162M	HSK 32	ER 16	90	22	0,5-10	245.19.ER16M
HSKA.607.32.0200M	HSK 32	ER 20	80	28	0,5-13	245.24.ER20M
HSKA.607.40.0160M	HSK 40	ER 16	80	22	0,5-10	245.19.ER16M
HSKA.607.40.0162M	HSK 40	ER 16	120	22	0,5-10	245.19.ER16M
HSKA.607.40.0200M	HSK 40	ER 20	80	28	0,5-13	245.24.ER20M
HSKA.607.40.0250M	HSK 40	ER 25	80	35	1-16	245.30.ER25M
HSKA.607.50.0162M	HSK 50	ER 16	160	22	0,5-10	245.19.ER16M
HSKA.607.63.0162M	HSK 63	ER 16	160	22	0,5-10	245.19.ER16M
HSKA.607.63.0202M	HSK 63	ER 20	160	28	0,5-13	245.24.ER20M

1. MANDRINI a cono HSKA DIN 69893/1

TOOL HOLDERS with HSKA cone DIN 69893/1



Mandri per astucci registrabili e portautensili con gambo a norma DIN 6327

Adaptors for adjustable inserts DIN 6327

Zwischenhülsen für axialverstellbare Futter DIN 6327

Douilles pour mandrins réglables axialement DIN 6327

ACCESSORI PER MACCHINE UTENSILI

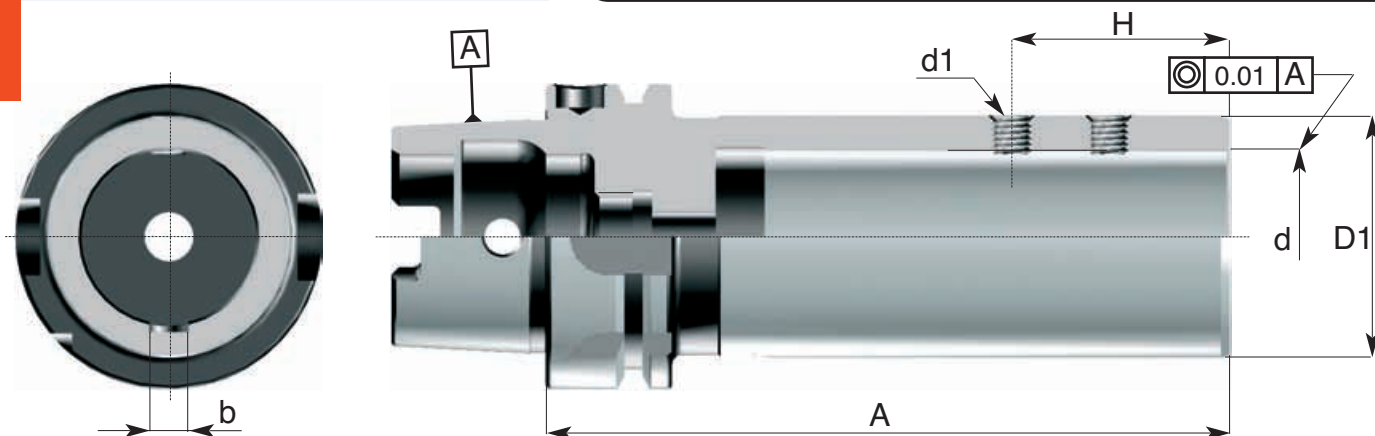


DIN 69893/1-A

Prebilanciato
Prebalanced
G6.3 / 8000rpm

ART: HSKA.610

1.
22



Codice di ord Code	HSKA	d h7	A	D1	H	b C11	Grano di serraggio "d1" Clamping screw "d1"
HSKA.610.63.0280	HSK 63	20	119	40	38	6	610.00.0080
HSKA.610.63.0360	HSK 63	28	141	50	45	8	610.00.0080
HSKA.610.100.0280	HSK 100	28	119	40	38	6	610.00.0080
HSKA.610.100.0360	HSK 100	36	141	50	45	8	610.00.0080
HSKA.610.100.0480	HSK 100	48	164	67	57	10	610.00.0100



ACCESSORI PER MACCHINE UTENSILI

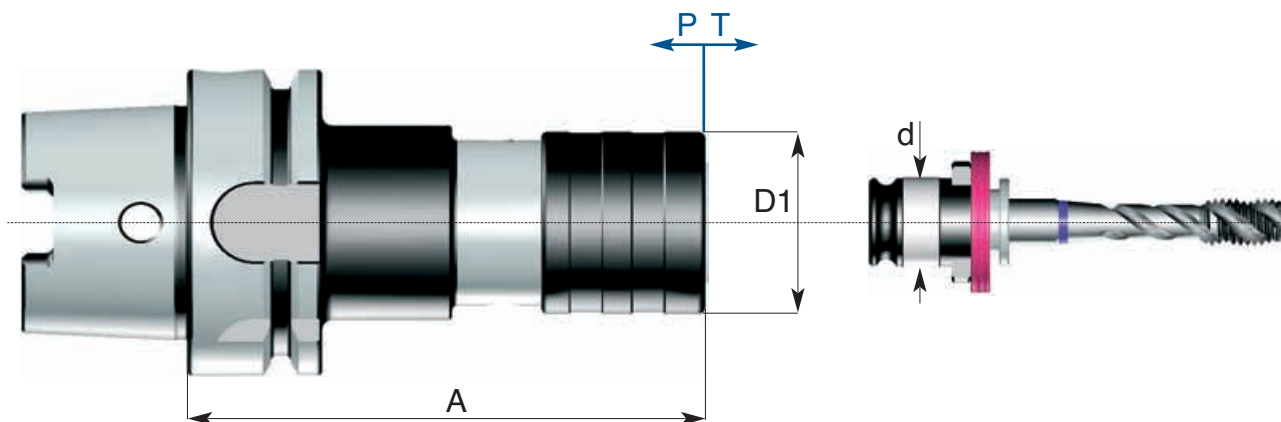


Maschiatori a cambio rapido con compensazione elastica assiale a trazione e pressione
Quick-change tapping chuck with compensation in compression and tension
Gewindeschneid- und Schnellwechselfutter mit Ausgleich auf Druck und Zug
Mandrin à tarauder à changement rapide avec compensation longitudinale et de la traction

DIN 69893/1-A

ART: HSKA.638

1.
23



Codice di ord Code	HSKA-A	A	D1	d	Capacità maschiatore Tapping capacity	Compensazione assiale	
						T Axial compensation	P
HSKA.638.50.1205	HSK 50	100	35	19	M3 - M14	5	7
HSKA.638.50.2008	HSK 50	146	53	31	M4.5 - M24	8	15
HSKA.638.63.1205	HSK 63	100	35	19	M3 - M14	5	7
HSKA.638.63.2008	HSK 63	146	53	31	M4.5 - M24	8	15
HSKA.638.80.1205	HSK 80	100	35	19	M3 - M14	5	7
HSKA.638.80.2008	HSK 80	150	53	31	M4.5 - M24	8	15
HSKA.638.100.2008	HSK 100	150	53	31	M4.5 - M24	8	15



1. MANDRINI a cono HSKA DIN 69893/1
TOOL HOLDERS with HSKA cone DIN 69893/1



Cilindro di collaudo certificato

Test arbors with test certificate

Kontrolldorne mit Prüfungszeugnis

Mandrins de contrôle avec certificat de bon fonctionnement

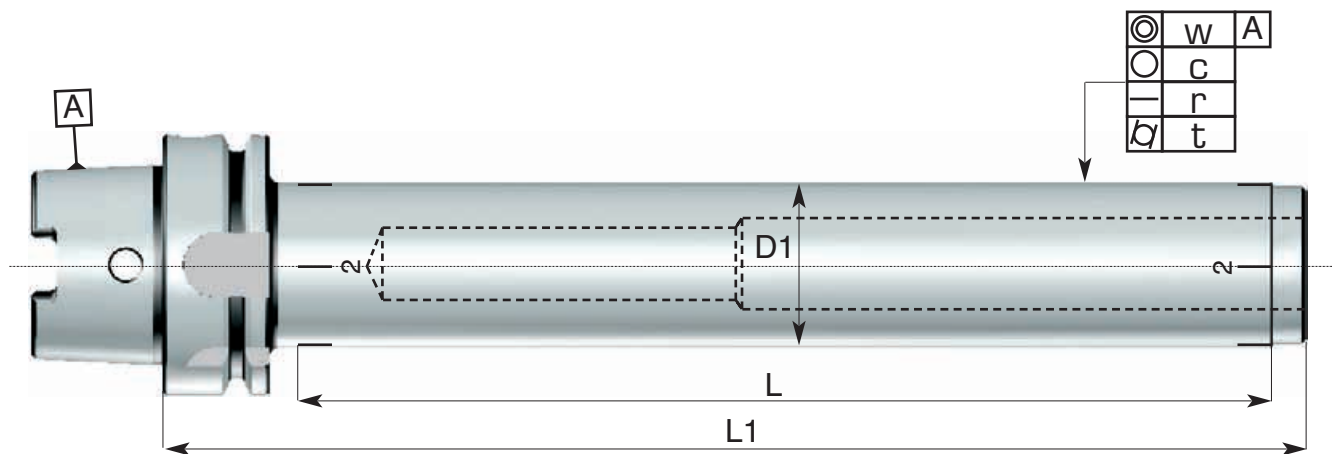
ACCESSORI PER MACCHINE UTENSILI



DIN 69893/1-A

ART: HSKA.808

1.
24



Codice di ord Code	HSK-A	D1 H5	L	L1	w	c	r	t
HSKA.808.40.0400	HSK 40	40	260	300	0.003	0.003	0.003	0.003
HSKA.808.50.0400	HSK 50	40	260	300	0.003	0.003	0.003	0.003
HSKA.808.63.0400	HSK 63	40	335	370	0.003	0.003	0.003	0.003
HSKA.808.80.0400	HSK 80	40	335	370	0.003	0.003	0.003	0.003
HSKA.808.100.0400	HSK 100	50	335	370	0.003	0.003	0.003	0.003

ACCESSORI PER MACCHINE UTENSILI



Attacchi base per sistema modulare tipo "VARILOCK"

Attachments for modular system - type "VARILOCK"

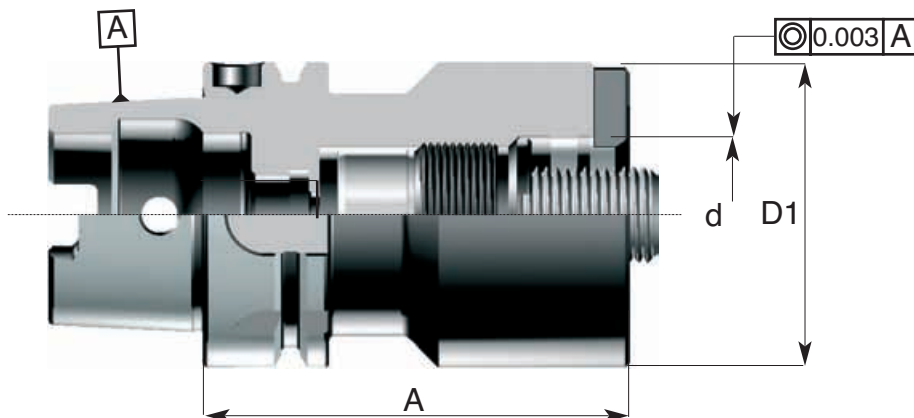
Verbindungs für Modulare Werkzeugsystem - Type "VARILOCK"

Attachements pour système modulaire - type "VARILOCK"

DIN 69893/1-A

ART: HSKA.VAR

1.
25



Codice di ord Code	HSKA	A	D1	d H5	Vite Screw	Ghiera Nut
HSKA.VAR.50.0500	HSK 50	75	50	27	VAR.HSK.0500.20	VAR.00.0500.10
HSKA.VAR.63.0500	HSK 63	75	50	27	VAR.HSK.0500.20	VAR.00.0500.10
HSKA.VAR.63.0630	HSK 63	88	63	32	VAR.HSK.0630.20	VAR.00.0800.10
HSKA.VAR.100.0500	HSK 100	82	50	27	VAR.00.0500.20	VAR.00.0500.10
HSKA.VAR.100.0630	HSK 100	95	63	32	VAR.HSK.0800.20	VAR.00.0800.10
HSKA.VAR.100.0800	HSK 100	100	80	32	VAR.HSK.0800.20	VAR.00.0800.10



1.29

- Portafrese combinati
Combined milling cutter chucks

1.30

- Portafrese a manicotto
Face milling cutter chucks

1.31

- Portafrese weldon
Milling cutter chucks Weldon

1.32

- Portafrese per calettamento
Shrink chucks

1.33

- Mandrini idraulici
hydraulic clamping chucks

1.34

- Mandrini portatestine filettate
Chucks for threaded heads

1.36

- Portafrese a cono Morse
Milling cutter with Morse cone

1.37

- Portapunte a cono Morse
Drill chucks with Morse cone

1.38

- Portapinze ER DIN 6499
Collet chucks ER DIN 6499

1.39

- Portapinze ER DIN 6499
Collet chucks ER DIN 6499



HSK-E
DIN 69893/5-E
Attacchi
con cono HSK-E
Attachments
with HSK-E cone

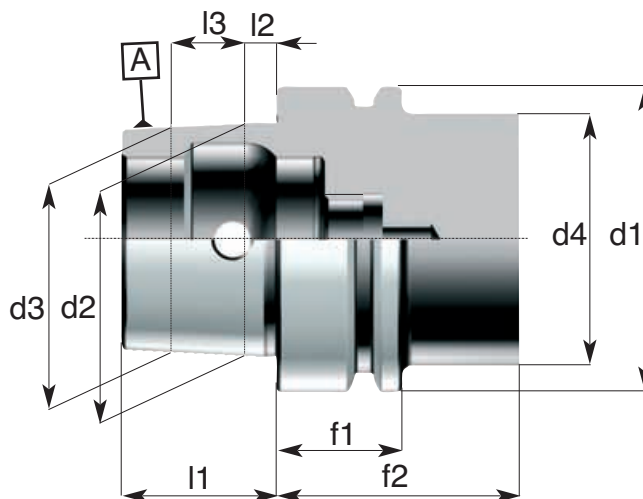


DIN 69893/5-E

Attacchi HSK DIN 69893/5-E



1.
28



Riferimento Item	d1	d2	d3	d4 max	l1	l2	l3	f1	f2 min
HSKE 25	25	19	18.15	20	13	2.5	8.5	10	20
HSKE 32	32	24	23.27	26	16	3.2	7.3	20	35
HSKE 40	40	30	29.05	34	20	5	9.5	20	35
HSKE 50	50	38	36.90	42	25	5	11	26	42
HSKE 63	63	48	46.53	53	32	6.3	14.7	26	42

**CARATTERISTICHE TECNICHE
DEI MANDRINI HSK**

- Costruiti in acciaio da cementazione legato
- Cementati con profondità 0,8-1mm
Temprati • Rinvenuti • Sabbati e bruniti
- Durezza HRC 58±2 • Resistenza al nucleo 800-1000 N/mm²
- Rettificati di precisione esternamente, internamente e nelle filettature delle ghiere chiudipinza
- Controllati con strumenti di misura certificati
- La tolleranza di precisione dei coni HSK è AT2

**STANDARD FEATURES
OF HSK TOOLING**

- Manufactured with Nickel Chrome Molybdenum steel
- Carburized with depth of case 0,8-1 mm
• Hardened and tempered • Black oxidized
- Surface Hardness RC 58±2 • Tensile strenght of core 800-1000 N/mm²
- Precision ground on shanks, inside tapers and collet nut threads
- Tested with high precision inspection and gaging equipment
- Taper accuracy of HSK SHANKS is AT2



Adduttore Refrigerante per HSK da ordinare a parte Pag. 12.42
 Coolant pipe for HSK to be ordered separately Pag. 12.42

ACCESSORI PER MACCHINE UTENSILI

Portafrese combinati con trascinamento frontale e chiave DIN 6358

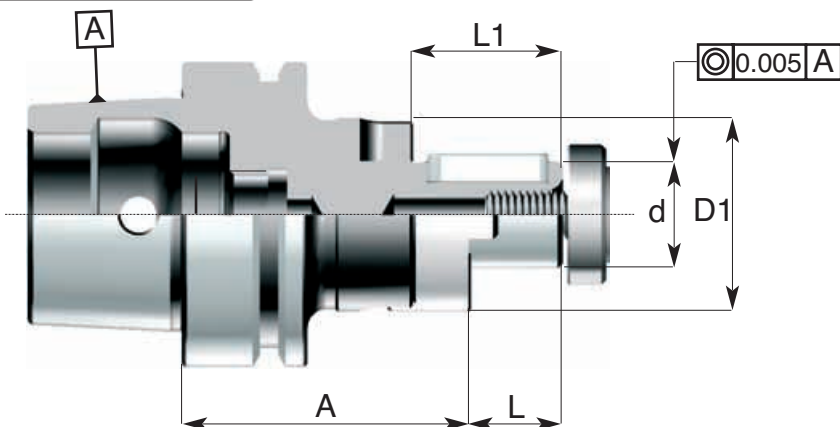
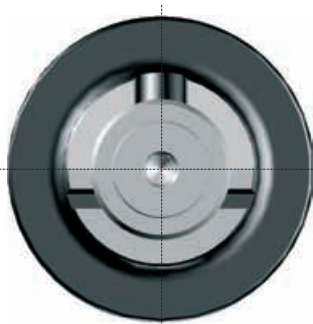
Combined milling cutter chucks DIN 6358 B
 Kombi-Aufsteckfräserdorne DIN 6358 B
 Mandrins porte-fraises combinés DIN 6358 B



Prebilanciato
 Prebalanced
 G6.3 / 8000rpm

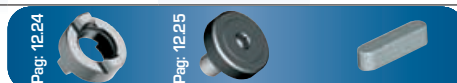
DIN 69893/5-E

ART: HSKE.130



1.
29

Codice di ord Code	HSKE	d h6	A	L	L1	D1	Trascinatore Ring	Vite Screw	Linguetta Key
HSKE.130.50.0160	HSK 50	16	60	17	27	32	190.01	191.01	130.199.01
HSKE.130.50.0220	HSK 50	22	60	19	31	40	190.02	191.02	130.199.02
HSKE.130.50.0270	HSK 50	27	70	21	33	48	190.03	191.03	130.199.03
HSKE.130.50.0320	HSK 50	32	70	24	38	58	190.04	191.04	130.199.04
HSKE.130.63.0160	HSK 63	16	60	17	27	32	190.01	191.01	130.199.01
HSKE.130.63.0220	HSK 63	22	60	19	31	40	190.02	191.02	130.199.02
HSKE.130.63.0270	HSK 63	27	60	21	33	48	190.03	191.03	130.199.03
HSKE.130.63.0320	HSK 63	32	62	24	38	58	190.04	191.04	130.199.04
HSKE.130.63.0400	HSK 63	40	70	27	41	70	190.05	191.05	130.199.05



Pag: 12.24

Pag: 12.25

1. MANDRINI a cono HSKE DIN 69893/5

TOOL HOLDERS with HSKE cone DIN 69893/5



Portafrese con trascinamento frontale per frese a manicotto DIN 138

Face milling cutter chucks DIN 138

Aufsteckfräserdorne DIN 138

Mandrins porte-fraises à surfacer DIN 138

ACCESSORI PER MACCHINE UTENSILI

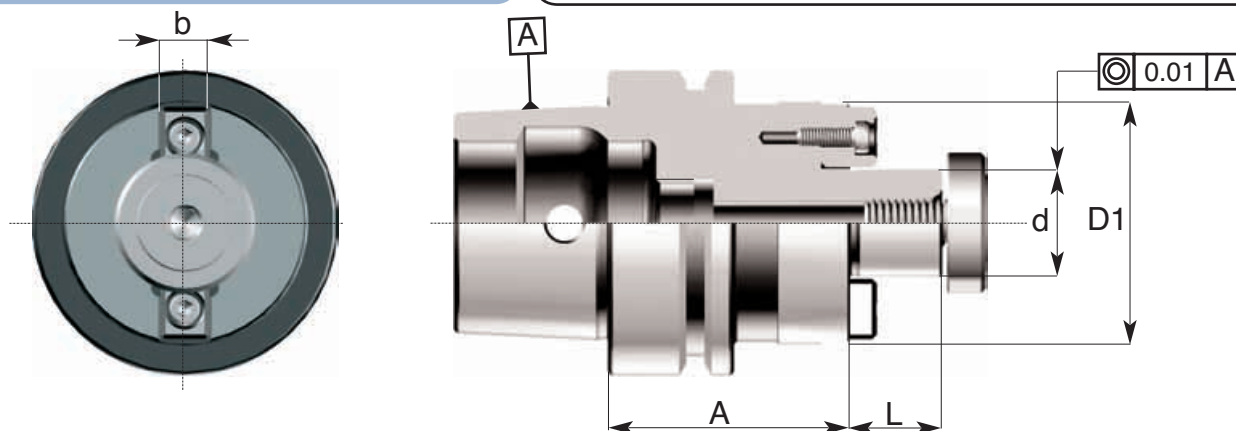
DIN 69893/5-E

Prebilanciato
Prebalanced
G6.3 / 8000rpm



ART: HSKE.150

1.
30



Codice di ord Code	HSKE	d h6	A	L	D1	b	Tassello Tenon	Vite Screw
HSKE.150.40.0160	HSK 40	16	45	17	32	8	192.06	191.01
HSKE.150.40.0220	HSK 40	22	50	19	40	10	192.07	191.02
HSKE.150.40.0270	HSK 40	27	55	21	48	12	192.08	191.03
HSKE.150.50.0160	HSK 50	16	50	17	40	8	192.06	191.01
HSKE.150.50.0220	HSK 50	22	50	19	50	10	192.07	191.02
HSKE.150.50.0270	HSK 50	27	60	21	60	12	192.08	191.03
HSKE.150.63.0160	HSK 63	16	50	17	40	8	192.06	191.01
HSKE.150.63.0220	HSK 63	22	50	19	50	10	192.07	191.02
HSKE.150.63.0270	HSK 63	27	60	21	60	12	192.08	191.03
HSKE.150.63.0320	HSK 63	32	60	24	72	14	192.09	191.04
HSKE.150.63.0400	HSK 63	40	62	27	82	16	192.10	191.05

Pag. 12.26



Pag. 12.25



ACCESSORI PER MACCHINE UTENSILI

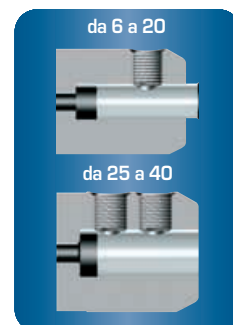
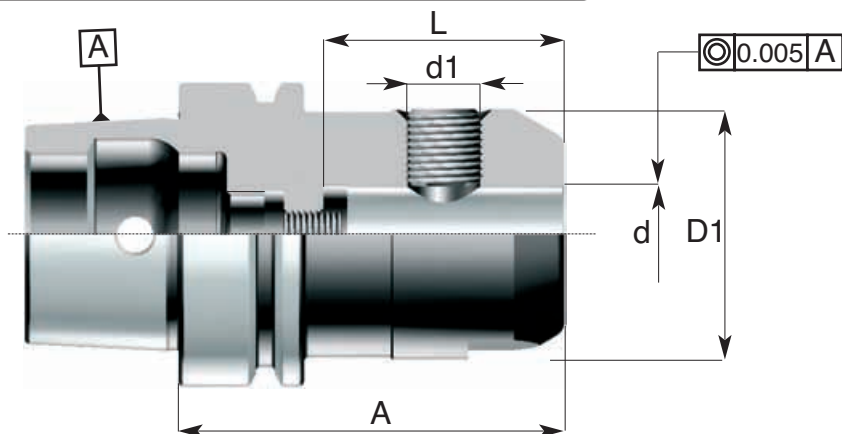
Portafrese cilindriche tipo weldon con vite di registrazione interna DIN 6359 B
 Milling cutter chucks for straight-shank tools - Weldon System DIN 6359 B
 Spannfutter Weldon für Zylinderschäfte DIN 6359 B
 Mandrins porte-Weldon pour fraises à queue cylindrique DIN 6359 B



Prebilanciato
 Prebalanced
 G6.3 / 8000rpm

DIN 69893/5-E

ART: HSK-E.208



1.
31

Codice di ord Code	HSK-E	d H5	A	D1	L	d1	Grano di serraggio Clamping screw
HSKE.208.32.0060	HSK 32	6	60	25	35	M6X10	208.00.0060
HSKE.208.32.0080	HSK 32	8	60	28	35	M8X10	208.00.0080
HSKE.208.32.0100	HSK 32	10	65	35	39	M10X12	208.00.0100
HSKE.208.32.0120	HSK 32	12	75	42	44	M12X1.5X16	208.00.0120
HSKE.208.32.0140	HSK 32	14	75	44	44	M12X1.5X16	208.00.0120
HSKE.208.32.0160	HSK 32	16	75	48	47	M14X1.5X16	208.00.0140
HSKE.208.40.0060	HSK 40	6	60	25	40	M6X10	208.00.0060
HSKE.208.40.0080	HSK 40	8	60	28	40	M8X10	208.00.0080
HSKE.208.40.0100	HSK 40	10	75	35	45	M10X12	208.00.0100
HSKE.208.40.0120	HSK 40	12	75	42	50	M12X1.5X16	208.00.0120
HSKE.208.40.0140	HSK 40	14	75	42	50	M12X1.5X16	208.00.0120
HSKE.208.40.0160	HSK 40	16	80	42	50	M14X1.5X16	208.00.0140
HSKE.208.40.0180	HSK 40	18	80	42	50	M14X1.5X16	208.00.0160
HSKE.208.40.0200	HSK 40	20	80	42	51	M16X1.5X16	208.00.0160
HSKE.208.50.0060	HSK 50	6	65	25	35	M6X10	208.00.0060
HSKE.208.50.0080	HSK 50	8	65	28	35	M8X10	208.00.0080
HSKE.208.50.0100	HSK 50	10	75	35	39	M10X12	208.00.0100
HSKE.208.50.0120	HSK 50	12	80	42	50	M12X1.5X16	208.00.0120
HSKE.208.50.0140	HSK 50	14	80	44	50	M12X1.5X16	208.00.0120
HSKE.208.50.0160	HSK 50	16	80	48	55	M14X1.5X16	208.00.0140
HSKE.208.50.0180	HSK 50	18	80	50	55	M14X1.5X16	208.00.0140
HSKE.208.50.0200	HSK 50	20	80	52	51	M16X1.5X16	208.00.0160
HSKE.208.63.0060	HSK 63	6	65	25	38	M6X10	208.00.0060
HSKE.208.63.0080	HSK 63	8	65	28	38	M8X10	208.00.0080
HSKE.208.63.0100	HSK 63	10	75	35	45	M10X12	208.00.0100
HSKE.208.63.0120	HSK 63	12	80	42	50	M12X1.5X16	208.00.0120
HSKE.208.63.0140	HSK 63	14	80	44	50	M12X1.5X16	208.00.0120
HSKE.208.63.0160	HSK 63	16	80	48	55	M14X1.5X16	208.00.0140
HSKE.208.63.0180	HSK 63	18	80	50	55	M14X1.5X16	208.00.0140
HSKE.208.63.0200	HSK 63	20	80	52	55	M16X1.5X16	208.00.0160
HSKE.208.63.0250	HSK 63	25	110	65	65	M18X1.5X20	208.00.0180
HSKE.208.63.0320	HSK 63	32	110	72	75	M20X1.5X20	208.00.0200



1. MANDRINI a cono HSKE DIN 69893/5

TOOL HOLDERS with HSKE cone DIN 69893/5



Portafrese per calettamento a caldo secondo DIN 69882-8

Shrink-fit chucks DIN 69882-8

Schrumpfutter DIN 69882-8

Mandrins de frettage DIN 69882-8

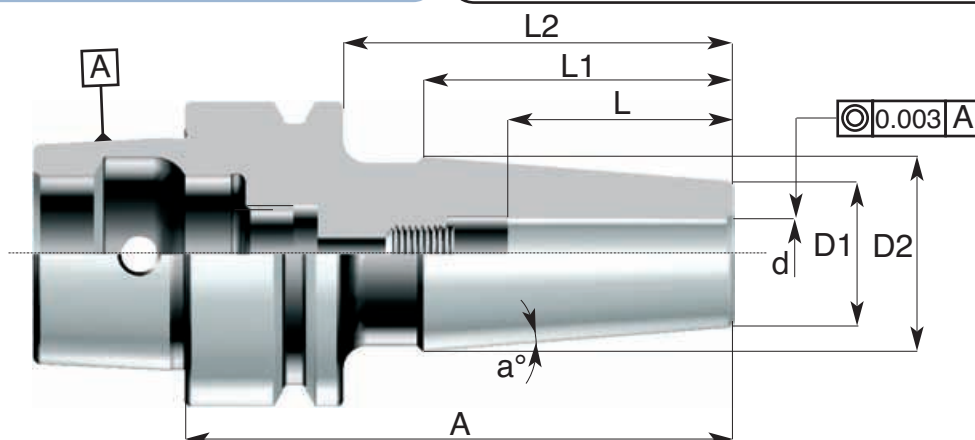
ACCESSORI PER MACCHINE UTENSILI

DIN 69893/1-E

Bilanciatura fine
Fine balancing



ART: HSKE.206



Codice di ord Code	HSKE	d h6	D1	D2	a°	L	L1	L2	A	bilanciatura balancing
HSKE.206.40.0030	HSK 40	3	9	16	4.5°	15	44	54	80	G6.3/2000RPM
HSKE.206.40.0040	HSK 40	4	9	16	4.5°	15	44	54	80	G6.3/2000RPM
HSKE.206.40.0050	HSK 40	5	12	19	4.5°	20	44	54	80	G6.3/2000RPM
HSKE.206.40.0060	HSK 40	6	12	19	4.5°	28	44	54	80	G6.3/2000RPM
HSKE.206.40.0080	HSK 40	8	15	22	4.5°	34	44	54	80	G6.3/2000RPM
HSKE.206.40.0100	HSK 40	10	19	27	4.5°	37	51	54	80	G6.3/2000RPM
HSKE.206.40.0120	HSK 40	12	24	32	4.5°	37	51	64	90	G6.3/2000RPM
HSKE.206.50.0030	HSK 50	3	9	16	4.5°	15	44	54	80	G6.3/1500RPM
HSKE.206.50.0040	HSK 50	4	9	16	4.5°	15	44	54	80	G6.3/1500RPM
HSKE.206.50.0050	HSK 50	5	12	19	4.5°	20	44	54	80	G6.3/1500RPM
HSKE.206.50.0060	HSK 50	6	12	19	4.5°	28	44	54	80	G6.3/1500RPM
HSKE.206.50.0080	HSK 50	8	15	23	4.5°	34	44	54	80	G6.3/1500RPM
HSKE.206.50.0100	HSK 50	10	19	27	4.5°	37	51	59	90	G6.3/1500RPM
HSKE.206.50.0120	HSK 50	12	24	32	4.5°	37	51	64	90	G6.3/1500RPM
HSKE.206.63.0030	HSK 63	3	9	16	4.5°	15	44	54	80	G6.3/1500RPM
HSKE.206.63.0040	HSK 63	4	9	16	4.5°	15	44	54	80	G6.3/1500RPM
HSKE.206.63.0050	HSK 63	5	12	19	4.5°	20	44	54	80	G6.3/1500RPM
HSKE.206.63.0060	HSK 63	6	12	19	4.5°	28	44	54	80	G6.3/1500RPM
HSKE.206.63.0080	HSK 63	8	15	22	4.5°	34	44	54	80	G6.3/1500RPM
HSKE.206.63.0100	HSK 63	10	19	27	4.5°	37	51	59	85	G6.3/1500RPM
HSKE.206.63.0120	HSK 63	12	24	32	4.5°	37	51	64	90	G6.3/1500RPM
HSKE.206.63.0140	HSK 63	14	27	34	4.5°	40	44	64	90	G6.3/1500RPM
HSKE.206.63.0160	HSK 63	16	27	34	4.5°	40	44	69	95	G6.3/1500RPM
HSKE.206.63.0200	HSK 63	20	33	42	4.5°	45	57	74	100	G6.3/1500RPM

1.
32

ACCESSORI PER MACCHINE UTENSILI

Mandrini a chiusura idraulica HYDRO-DELTA
 Hydraulic clamping chucks HYDRO DELTA
 Dehnspannfutter HYDRO DELTA
 Mandrins expansibles HYDRO DELTA

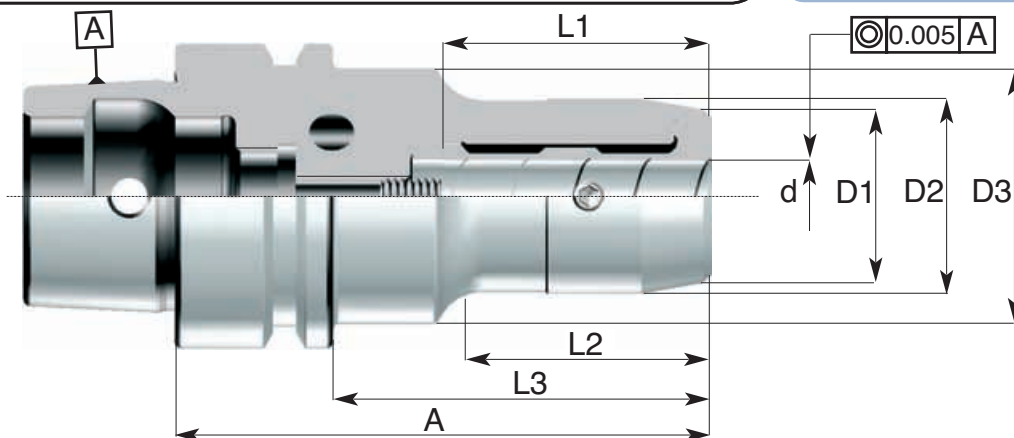


Bilanciatura fine
 Fine balancing

DIN 69893/1-E

ART: 207

1.
33



Codice di ord Code	HSKE	d	D1	D2	D3	L1	L2	L3	A	bilanciatura balancing
HSKE .207.40.0060	HSK 40	6	22	26	42	35	22	46	66	G6.3/3000ORPM
HSKE .207.40.0080	HSK 40	8	24	28	42	35	25	53	73	G6.3/3000ORPM
HSKE .207.40.0100	HSK 40	10	26	30	42	35	30	57	77	G6.3/3000ORPM
HSKE .207.40.0120	HSK 40	12	28	32	42	44	40	65	85	G6.3/3000ORPM
HSKE .207.50.0060	HSK 50	6	22	26	53	35	22	46	72	G6.3/3000ORPM
HSKE .207.50.0080	HSK 50	8	24	28	53	35	25	53	79	G6.3/3000ORPM
HSKE .207.50.0100	HSK 50	10	26	30	53	35	30	57	89	G6.3/3000ORPM
HSKE .207.50.0120	HSK 50	12	28	32	53	44	40	65	91	G6.3/3000ORPM
HSKE .207.50.0160	HSK 50	16	34	38	53	47	40	67	93	G6.3/3000ORPM
HSKE .207.50.0200	HSK 50	20	38	42	53	49	40	67	93	G6.3/3000ORPM

1. MANDRINI a cono HSK DIN 69893/5

TOOL HOLDERS with HSK cone DIN 69893/5



Mandrini portatestine filettate
 Chucks for threaded heads
 Mandrins pour têtes filetées
 Spannfutter für Gewindeköpfe

ACCESSORI PER MACCHINE UTENSILI

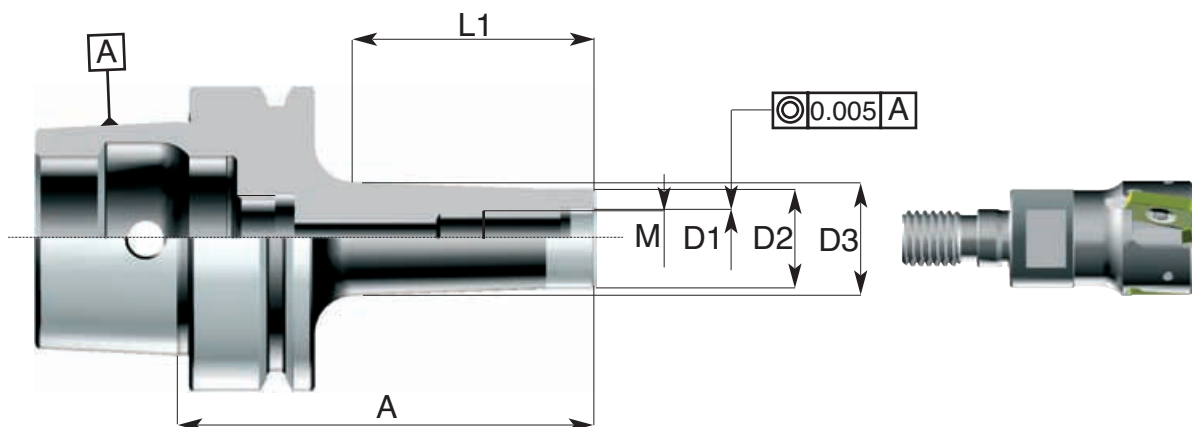


DIN 69893/1-E

Bilanciatura fine
 Fine balancing

ART: HSKE.267

1.
34



Codice di ord Code	HSK-A	M	D1	D2	D3	L1	A	bilanciatura balancing
HSKE.267.40.0060	HSK 40	M6	6.5	9.7	13	25	53	G6.3/20000RPM
HSKE.267.40.0062	HSK 40	M6	6.5	9.7	20	50	78	G6.3/20000RPM
HSKE.267.40.0064	HSK 40	M6	6.5	9.7	23	75	103	G6.3/20000RPM
HSKE.267.40.0080	HSK 40	M8	8.5	12.7	15	25	53	G6.3/20000RPM
HSKE.267.40.0082	HSK 40	M8	8.5	12.7	23	50	78	G6.3/20000RPM
HSKE.267.40.0084	HSK 40	M8	8.5	12.7	23	75	103	G6.3/20000RPM
HSKE.267.40.0086	HSK 40	M8	8.5	12.7	25	100	128	G6.3/20000RPM
HSKE.267.40.0100	HSK 40	M10	10.5	17.7	20	25	53	G6.3/20000RPM
HSKE.267.40.0102	HSK 40	M10	10.5	17.7	25	50	78	G6.3/20000RPM
HSKE.267.40.0104	HSK 40	M10	10.5	17.7	28	75	103	G6.3/20000RPM
HSKE.267.40.0106	HSK 40	M10	10.5	17.7	30	100	128	G6.3/20000RPM
HSKE.267.50.0060	HSK 50	M6	6.5	9.7	13	25	59	G6.3/20000RPM
HSKE.267.50.0062	HSK 50	M6	6.5	9.7	20	50	84	G6.3/20000RPM
HSKE.267.50.0064	HSK 50	M6	6.5	9.7	23	75	109	G6.3/20000RPM
HSKE.267.50.0080	HSK 50	M8	8.5	12.7	15	25	59	G6.3/20000RPM
HSKE.267.50.0082	HSK 50	M8	8.5	12.7	23	50	84	G6.3/20000RPM
HSKE.267.50.0084	HSK 50	M8	8.5	12.7	23	75	109	G6.3/20000RPM
HSKE.267.50.0086	HSK 50	M8	8.5	12.7	25	100	134	G6.3/20000RPM
HSKE.267.50.0100	HSK 50	M10	10.5	17.7	20	25	59	G6.3/20000RPM
HSKE.267.50.0102	HSK 50	M10	10.5	17.7	25	50	84	G6.3/20000RPM
HSKE.267.50.0104	HSK 50	M10	10.5	17.7	28	75	109	G6.3/20000RPM
HSKE.267.50.0106	HSK 50	M10	10.5	17.7	30	100	134	G6.3/20000RPM
HSKE.267.50.0108	HSK 50	M10	10.5	17.7	40	130	156	G6.3/20000RPM
HSKE.267.50.0120	HSK 50	M12	12.5	20.7	24	25	59	G6.3/20000RPM
HSKE.267.50.0122	HSK 50	M12	12.5	20.7	24	50	84	G6.3/20000RPM
HSKE.267.50.0124	HSK 50	M12	12.5	20.7	31	75	109	G6.3/20000RPM
HSKE.267.50.0160	HSK 50	M16	17	28.7	34	25	59	G6.3/20000RPM
HSKE.267.50.0162	HSK 50	M16	17	28.7	34	50	84	G6.3/20000RPM
HSKE.267.50.0164	HSK 50	M16	17	28.7	34	75	109	G6.3/20000RPM

ACCESSORI PER MACCHINE UTENSILI

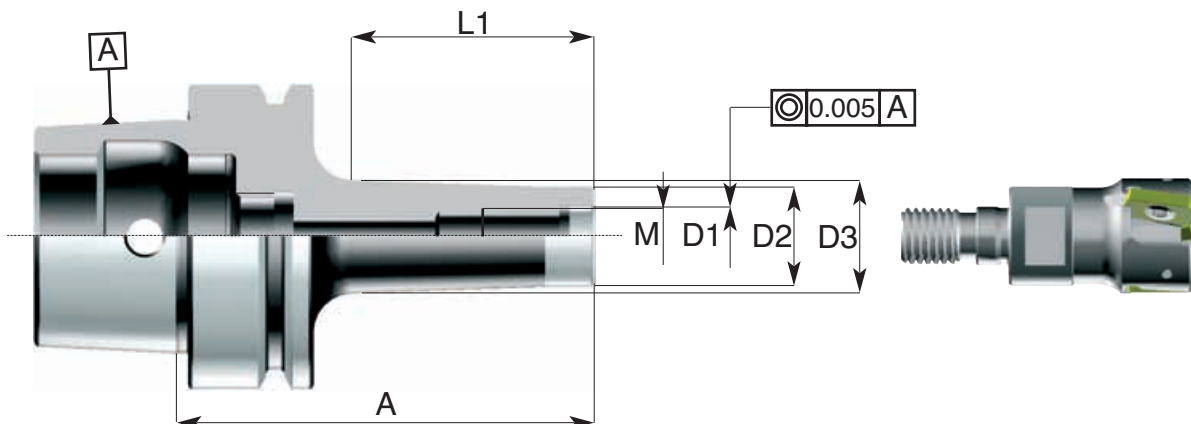
Mandrini portatestine filettate
 Chucks for threaded heads
 Mandrins pour têtes filetées
 Spannfutter für Gewindeköpfe



Bilanciatura fine
 Fine balancing

DIN 69893/1-E

ART: HSKE.267



1.
35

Codice di ord Code	HSKA	M	D1	D2	D3	L1	A	bilanciatura balancing
HSKE.267.63.0060	HSK 63	M6	6.5	9.7	13	25	59	G6.3/20000RPM
HSKE.267.63.0062	HSK 63	M6	6.5	9.7	20	50	84	G6.3/20000RPM
HSKE.267.63.0064	HSK 63	M6	6.5	9.7	23	75	109	G6.3/20000RPM
HSKE.267.63.0080	HSK 63	M8	8.5	12.7	15	25	59	G6.3/20000RPM
HSKE.267.63.0082	HSK 63	M8	8.5	12.7	23	50	84	G6.3/20000RPM
HSKE.267.63.0084	HSK 63	M8	8.5	12.7	23	75	109	G6.3/20000RPM
HSKE.267.63.0086	HSK 63	M8	8.5	12.7	25	100	134	G6.3/20000RPM
HSKE.267.63.0100	HSK 63	M10	10.5	17.7	20	25	59	G6.3/20000RPM
HSKE.267.63.0102	HSK 63	M10	10.5	17.7	25	50	84	G6.3/20000RPM
HSKE.267.63.0104	HSK 63	M10	10.5	17.7	28	75	109	G6.3/20000RPM
HSKE.267.63.0106	HSK 63	M10	10.5	17.7	30	100	134	G6.3/20000RPM
HSKE.267.63.0120	HSK 63	M12	12.5	20.7	24	25	59	G6.3/20000RPM
HSKE.267.63.0122	HSK 63	M12	12.5	20.7	24	50	84	G6.3/20000RPM
HSKE.267.63.0124	HSK 63	M12	12.5	20.7	31	75	109	G6.3/20000RPM
HSKE.267.63.0126	HSK 63	M12	12.5	20.7	31	100	134	G6.3/20000RPM
HSKE.267.63.0160	HSK 63	M16	17	28.7	34	25	59	G6.3/20000RPM
HSKE.267.63.0162	HSK 63	M16	17	28.7	34	50	84	G6.3/20000RPM
HSKE.267.63.0164	HSK 63	M16	17	28.7	34	75	109	G6.3/20000RPM
HSKE.267.63.0166	HSK 63	M16	17	28.7	39	100	134	G6.3/20000RPM

1. MANDRINI a cono HSKE DIN 69893/5

TOOL HOLDERS with HSKE cone DIN 69893/5



Riduzioni da cono HSK a cono Morse DIN 6364 B per frese con vite interna
 Morse taper adaptors sleeves for cutters with internal screw - DIN 6364 B
 Zwischenhülsen für Morsekegel mit Auzugsgewinde - DIN 6364 B
 Douilles de réduction à cône Morse pour fraises avec vis - DIN 6364 B

ACCESSORI PER MACCHINE UTENSILI

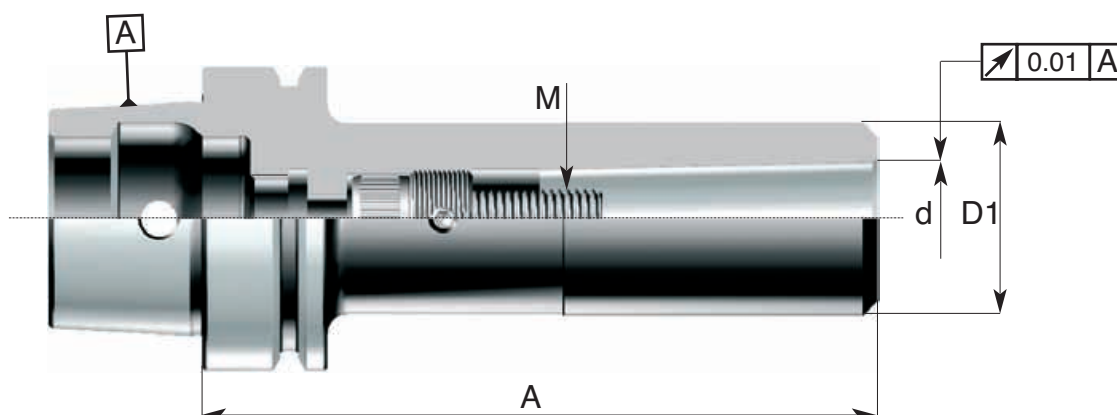


DIN 69893/5-E

Prebilanciato
 Prebalanced
 G6.3 / 8000rpm

ART: HSKE.261

1.
36



Codice di ord Code	HSKE	Cono Morse	d	A	D1	M	Vite Screw	Ghiera Nut
HSKE.261.40.0100	HSK 40	Morse 1	12.065	90	25	M6	261.00.0625	261.12.0100
HSKE.261.40.0200	HSK 40	Morse 2	17.780	100	32	M10	261.00.1030.B	261.15.200
HSKE.261.50.0100	HSK 50	Morse 1	12.065	100	25	M6	261.00.0625	261.16.1100
HSKE.261.50.0200	HSK 50	Morse 2	17.780	120	32	M10	261.00.1030.B	261.16.1100
HSKE.261.50.0300	HSK 50	Morse 3	23.825	140	40	M12	261.00.1240.B	261.00.1220
HSKE.261.63.0100	HSK 63	Morse 1	12.065	100	25	M6	261.00.0625	261.00.1018
HSKE.261.63.0200	HSK 63	Morse 2	17.780	120	32	M10	261.00.1030.E	261.00.1018
HSKE.261.63.0300	HSK 63	Morse 3	23.825	140	40	M12	261.00.1240.E	261.00.1220
HSKE.261.63.0400	HSK 63	Morse 4	31.267	160	48	M16	261.00.1650.E	261.00.1626



ACCESSORI PER MACCHINE UTENSILI

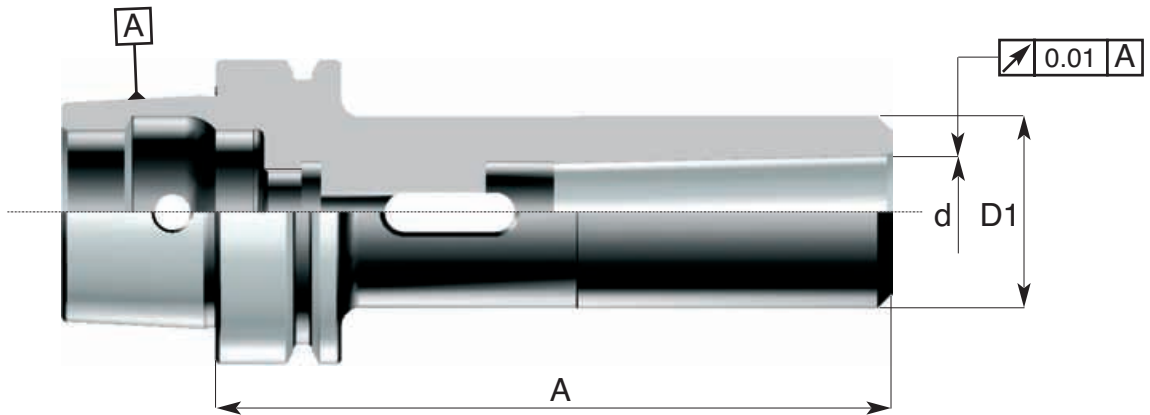


Riduzioni da cono HSK a cono Morse per punte
 Morse taper adaptors sleeves for drills with driving shank
 Zwischenhülsen für Morsekegel mit Austreiblappen
 Douilles de réduction à cône Morse pour forets avec dents d'entraînement

Prebilanciato
 Prebalanced
 G6.3 / 8000rpm

DIN 69893/5-E

ART: HSKE.262



1.
37

Codice di ord Code	HSKE	Cono Morse	d	A	D1
HSKE.262.40.0100	HSK 40	Morse 1	12.065	95	25
HSKE.262.40.0200	HSK 40	Morse 2	17.780	110	32
HSKE.262.50.0100	HSK 50	Morse 1	12.065	100	25
HSKE.262.50.0200	HSK 50	Morse 2	17.780	120	32
HSKE.262.50.0300	HSK 50	Morse 3	23.825	140	40
HSKE.262.63.0100	HSK 63	Morse 1	12.065	100	25
HSKE.262.63.0200	HSK 63	Morse 2	17.780	120	32
HSKE.262.63.0300	HSK 63	Morse 3	23.825	140	40
HSKE.262.63.0400	HSK 63	Morse 4	31.267	160	48

1. MANDRINI a cono HSKE DIN 69893/5

TOOL HOLDERS with HSKE cone DIN 69893/5



Mandrini portapinze ER DIN 6499 - ghiera standard

Collet chucks ER DIN 6499 - standard nut

Spannzangenhalter ER DIN 6499 - standard Spannmutter

Mandrins porte-pinces ER DIN 6499 - écrou standard

ACCESSORI PER MACCHINE UTENSILI

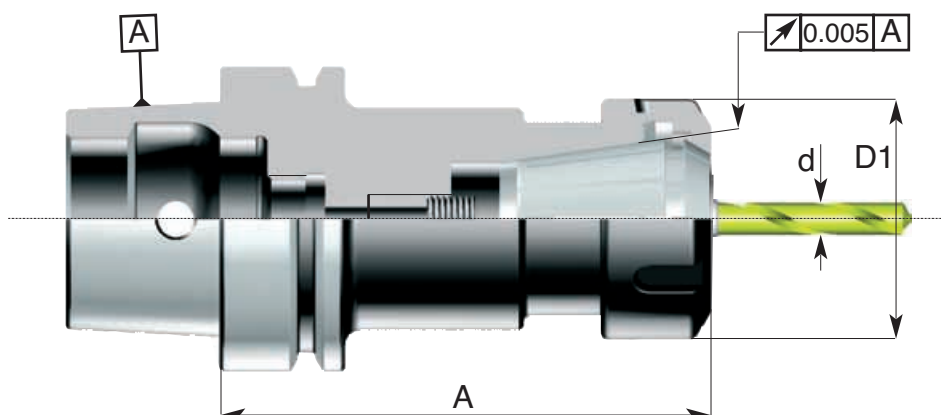
DIN 69893/5-E

Prebilanciato
Prebalanced
G6.3 / 8000rpm



ART: HSKE.607
ghiera standard / standard nut

1.
38



Codice di ord Code	HSKE	ER	A	D1	Cap. di chiusura Pinza "d" Capacity range "d"	Ghiera Nut
HSKE.607.40.0250	HSK 40	ER 25	80	42	1-16	245.32.ER25
HSKE.607.40.0252	HSK 40	ER 25	120	42	1-16	245.32.ER25
HSKE.607.50.0160	HSK 50	ER 16	100	28	0,5-10	245.22.ER16
HSKE.607.50.0250	HSK 50	ER 25	100	42	1-16	245.32.ER25
HSKE.607.50.0320	HSK 50	ER 32	100	50	1-20	245.40.ER32
HSKE.607.50.0322	HSK 50	ER 32	150	50	1-20	245.40.ER32
HSKE.607.50.0400	HSK 50	ER 40	100	63	2-30	245.50.ER40
HSKE.607.63.0160	HSK 63	ER 16	100	28	0,5-10	245.22.ER16
HSKE.607.63.0250	HSK 63	ER 25	100	42	1-16	245.32.ER25
HSKE.607.63.0320	HSK 63	ER 32	100	50	1-20	245.40.ER32
HSKE.607.63.0322	HSK 63	ER 32	150	50	1-20	245.40.ER32
HSKE.607.63.0400	HSK 63	ER 40	100	63	2-30	245.50.ER40

ACCESSORI PER MACCHINE UTENSILI

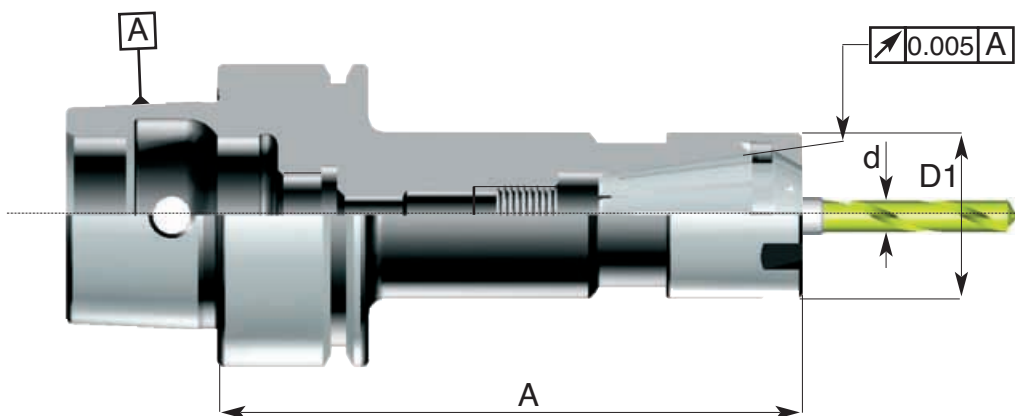


Mandrini portapinze ER DIN 6499 - ghiera mini
 Collet chucks ER DIN 6499 - mini nut
 Spannzangenhalter ER DIN 6499 - mini Spannmutter
 Mandrins porte-pinces ER DIN 6499 - écrou mini

Prebilanciato
 Prebalanced
 G6.3 / 8000rpm

DIN 69893/5-E

ART: HSK.607
 ghiera mini / mini nut



1.
39

Pinze / Collets
 pag: 12.6

Ghiera / Nuts
 pag: 12.13

Codice di ord Code	HSK-E	ER	A	D1	Cap. di chiusura Pinza "d" Capacity range "d"	Ghiera Nut
HSKE.607.25.0110M	HSK 25	ER 11	50	16	0,5-7	245.13.ER11M
HSKE.607.25.0160M	HSK 25	ER 16	50	22	0,5-10	245.19.ER16M
HSKE.607.25.0162M	HSK 25	ER 16	75	22	0,5-10	245.19.ER16M
HSKE.607.25.0200M	HSK 25	ER 20	50	28	0,5-13	245.24.ER20M
HSKE.607.32.0112M	HSK 32	ER 11	90	16	0,5-7	245.13.ER11M
HSKE.607.32.0160M	HSK 32	ER 16	75	22	0,5-10	245.19.ER16M
HSKE.607.32.0162M	HSK 32	ER 16	90	22	0,5-10	245.19.ER16M
HSKE.607.32.0200M	HSK 32	ER 20	80	28	0,5-13	245.24.ER20M
HSKE.607.40.0160M	HSK 40	ER 16	80	22	0,5-10	245.19.ER16M
HSKE.607.40.0162M	HSK 50	ER 16	130	22	0,5-10	245.19.ER16M
HSKE.607.50.0162M	HSK 50	ER 16	160	22	0,5-10	245.19.ER16M
HSKE.607.63.0162M	HSK 63	ER 16	160	22	0,5-10	245.19.ER16M

1.43

- Portafrese cil. per wood machine
Cylindrical milling cutter chucks

1.44

- Portafrese combinati
Combined milling cutter chucks

1.45

- Portafrese a manicotto
Face milling cutter chucks

1.46

- Portafrese weldon
Milling cutter chucks Weldon

1.47

- Portafrese a cono Morse
Milling cutter with Morse cone

1.48

- Portapunte a cono Morse
Drill chucks with Morse cone

1.49

- Portapinze ER DIN 6499
Collet chucks ER DIN 6499



HSK-F
DIN 69893/6-F
Attacchi
con cono HSK-F
Attachments
with HSK-F cone



1. MANDRINI a cono HSKF DIN 69893/6
 TOOL HOLDERS with HSKF cone DIN 69893/6



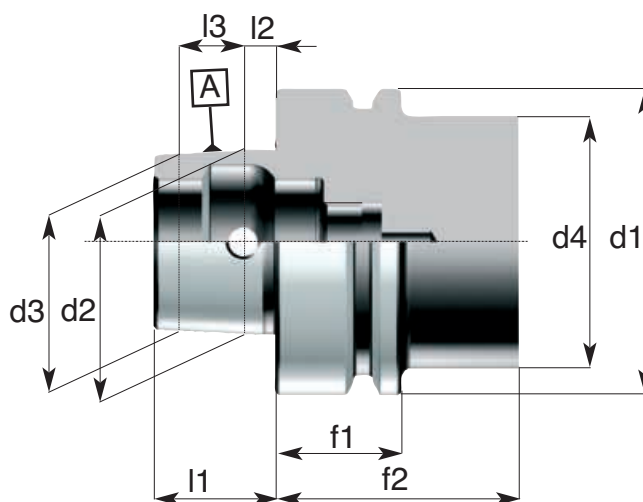
ACCESSORI PER MACCHINE UTENSILI

DIN 69893/6-F

Attacchi HSK DIN 69893/6-F



1.
42



Riferimento Item	d1	d2	d3	d4 max	l1	l2	l3	f1	f2 min
HSKF 50	50	30	29.05	42	20	4	9.5	26	42
HSKF 63	63	38	36.90	53	25	5	11	26	42

**CARATTERISTICHE TECNICHE
DEI MANDRINI HSK**

- Costruiti in acciaio da cementazione legato
- Cementati con profondità 0,8-1mm
Temprati • Rinvenuti • Sabbati e bruniti
- Durezza HRC 58±2 • Resistenza al nucleo 800-1000 N/mm²
- Rettificati di precisione esternamente, internamente e nelle filettature delle ghiera chiudipinza
- Controllati con strumenti di misura certificati
- La tolleranza di precisione dei coni HSK è AT2

**STANDARD FEATURES
OF HSK TOOLING**

- Manufactured with Nickel Chrome Molybdenum steel
- Carburized with depth of case 0,8-1 mm
• Hardened and tempered • Black oxidized
- Surface Hardness RC 58±2 • Tensile strenght of core 800-1000 N/mm²
- Precision ground on shanks, inside tapers and collet nut threads
- Tested with high precision inspection and gaging equipment
- Taper accuracy of HSK SHANKS is AT2



Adduttore Refrigerante per HSK da ordinare a parte Pag. 12.42
 Coolant pipe for HSK to be ordered separately Pag. 12.42

ACCESSORI PER MACCHINE UTENSILI

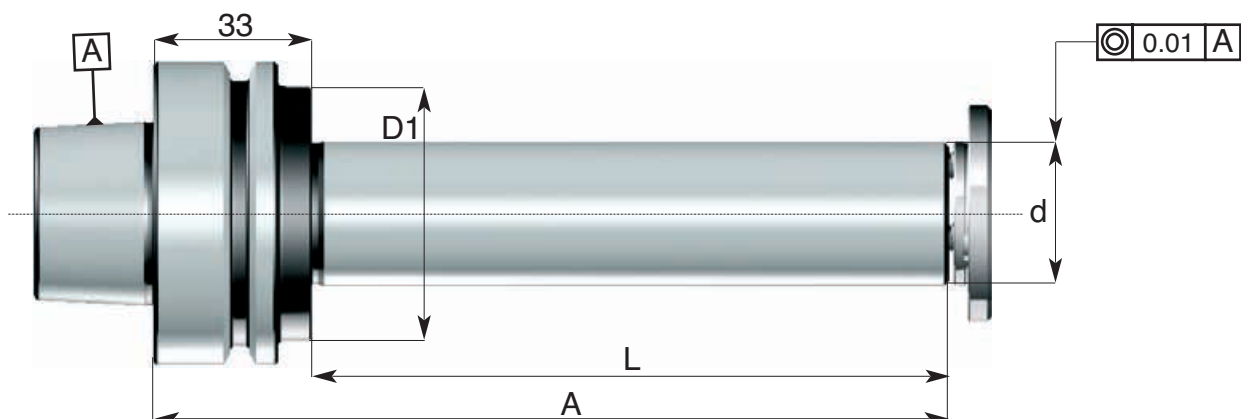


Portafrese cilindrico per macchine lavorazione legno
 Cylindrical milling cutter chucks for woodworking machine
 Aufsteckfräserdorne für Holzbearbeitungsmaschinen
 Mandrins cylindriques porte-fraises pour machines à bois

Prebilanciato
 Prebalanced
 G6.3 / 8000rpm

DIN 69893/6-F

ART: HSKF.111



1.
43

Codice di ord Code	HSKF	d h6	A	L	D1	Rondella Washer
HSKF.111.63.30093	HSK 63	30	126	93	53	R.111.30
HSKF.111.63.30103	HSK 63	30	136	103	53	R.111.30
HSKF.111.63.30123	HSK 63	30	156	123	53	R.111.30
HSKF.111.63.30133	HSK 63	30	166	133	53	R.111.30
HSKF.111.63.30143	HSK 63	30	176	143	53	R.111.30
HSKF.111.63.30153	HSK 63	30	186	153	53	R.111.30



1. MANDRINI a cono HSKF DIN 69893/6

TOOL HOLDERS with HSKF cone DIN 69893/6



Portafrese combinati con trascinamento frontale e chiavetta DIN 6358 B

Combined milling cutter chucks DIN 6358 B

Kombi-Aufsteckfräserdorne DIN 6358 B

Mandrins porte-fraises combinés DIN 6358 B

ACCESSORI PER MACCHINE UTENSILI

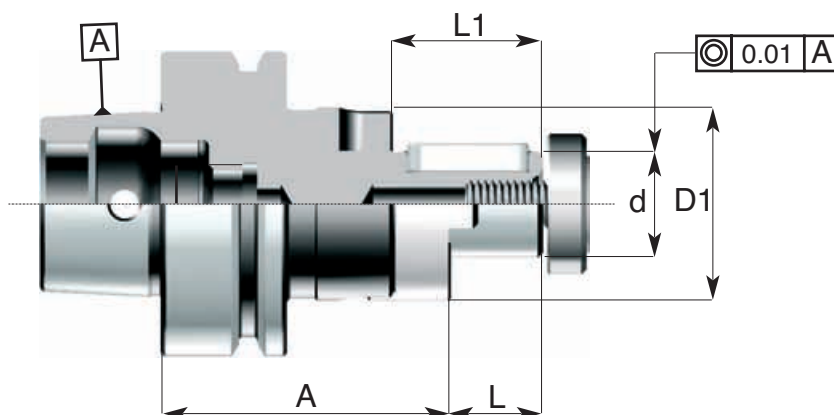
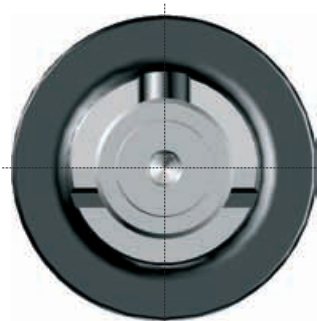
DIN 69893/6-F

Prebilanciato
Prebalanced
G6.3 / 8000rpm

ART: HSKF.130



1.
44



Codice di ord Code	HSK-F	d h6	A	L	L1	D1	Trascinatore Ring	Vite Screw	Linguetta Key
HSKF.130.50.0160	HSK 50	16	60	17	27	32	190.01	191.01	130.199.01
HSKF.130.50.0220	HSK 50	22	60	19	31	40	190.02	191.02	130.199.02
HSKF.130.50.0270	HSK 50	27	60	21	33	48	190.03	191.03	130.199.03
HSKF.130.50.0320	HSK 50	32	65	24	38	58	190.04	191.04	130.199.04
HSKF.130.63.0160	HSK 63	16	60	17	27	32	190.01	191.01	130.199.01
HSKF.130.63.0220	HSK 63	22	60	19	31	40	190.02	191.02	130.199.02
HSKF.130.63.0270	HSK 63	27	60	21	33	48	190.03	191.03	130.199.03
HSKF.130.63.0320	HSK 63	32	62	24	38	58	190.04	191.04	130.199.04
HSKF.130.63.0400	HSK 63	40	75	27	41	70	190.05	191.05	130.199.05

Pag: 12.24



Pag: 12.25



ACCESSORI PER MACCHINE UTENSILI

Portafrese con trascinamento frontale per frese a manicotto DIN 138

Face milling cutter chucks DIN 138

Aufsteckfräserdorne DIN 138

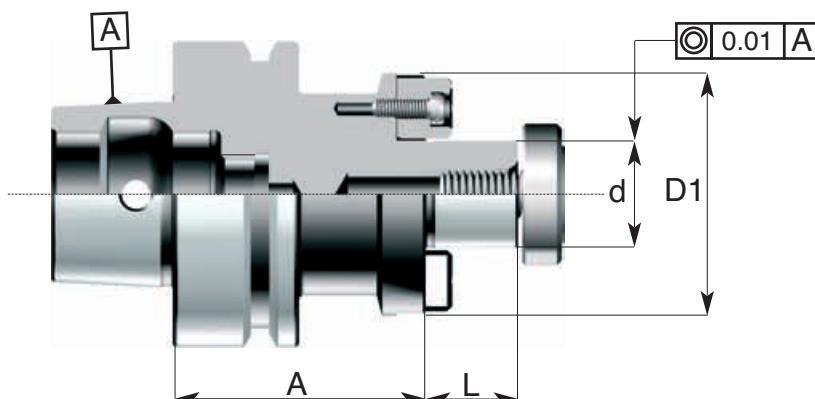
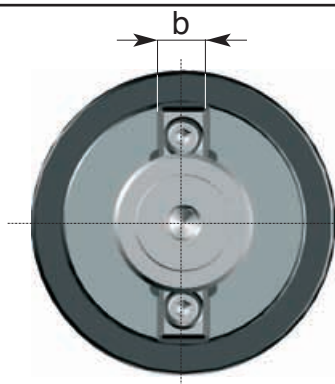
Mandrins porte-fraises à surfacer DIN 138



Prebilanciato
Prebalanced
G6.3 / 8000rpm

DIN 69893/6-F

ART: HSKF.150



1.
45

Codice di ord Code	HSK-F	d h6	A	L	D1	b	Tassello Tenon	Vite Screw
HSKF.150.50.0160	HSK 50	16	50	17	40	8	192.06	191.01
HSKF.150.50.0220	HSK 50	22	50	19	50	10	192.07	191.02
HSKF.150.50.0270	HSK 50	27	60	21	60	12	192.08	191.03
HSKF.150.63.0160	HSK 63	16	50	17	40	8	192.06	191.01
HSKF.150.63.0220	HSK 63	22	50	19	50	10	192.07	191.02
HSKF.150.63.0270	HSK 63	27	60	21	60	12	192.08	191.03
HSKF.150.63.0320	HSK 63	32	60	24	72	14	192.09	191.04
HSKF.150.63.0400	HSK 63	40	62	27	82	16	192.10	191.05



1. MANDRINI a cono HSKF DIN 69893/6

TOOL HOLDERS with HSKF cone DIN 69893/6



Portafrese cilindriche tipo weldon con vite di registrazione interna DIN 6359 B
 Milling cutter chucks for straight-shank tools - Weldon System DIN 6359 B
 Spannfutter Weldon für Zylinderschäfte DIN 6359 B
 Mandrins porte-Weldon pour fraises à queue cylindrique DIN 6359 B

ACCESSORI PER MACCHINE UTENSILI

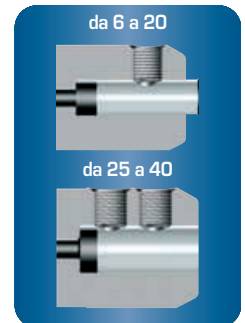
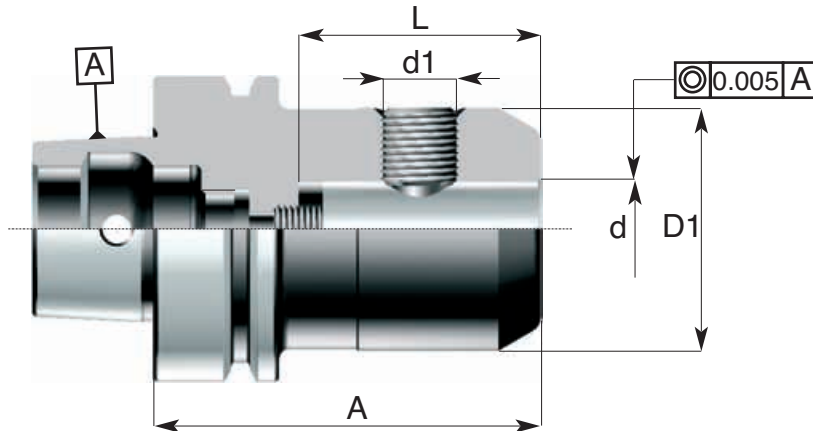


DIN 69893/6-F

Prebilanciato
 Prebalanced
 G6.3 / 8000rpm

ART: HSKF.208

1.
46



Codice di ord Code	HSKF	d H5	A	D1	L	d1	Grano di serraggio Clamping screw
HSKF.208.50.0060	HSK 50	6	65	25	35	M6X10	208.00.0060
HSKF.208.50.0080	HSK 50	8	65	28	35	M8X10	208.00.0080
HSKF.208.50.0100	HSK 50	10	75	35	39	M10X12	208.00.0100
HSKF.208.50.0120	HSK 50	12	80	42	44	M12X1.5X16	208.00.0120
HSKF.208.50.0140	HSK 50	14	80	44	44	M12X1.5X16	208.00.0120
HSKF.208.50.0160	HSK 50	16	80	48	47	M14X1.5X16	208.00.0140
HSKF.208.50.0180	HSK 50	18	80	50	47	M16X1.5X16	208.00.0160
HSKF.208.50.0200	HSK 50	20	80	52	49	M16X1.5X16	208.00.0160
HSKF.208.63.0060	HSK 63	6	65	25	35	M6X10	208.00.0060
HSKF.208.63.0080	HSK 63	8	65	28	35	M8X10	208.00.0080
HSKF.208.63.0100	HSK 63	10	75	35	39	M10X12	208.00.0100
HSKF.208.63.0120	HSK 63	12	80	42	44	M12X1.5X16	208.00.0120
HSKF.208.63.0140	HSK 63	14	80	44	44	M12X1.5X16	208.00.0120
HSKF.208.63.0160	HSK 63	16	80	48	47	M14X1.5X16	208.00.0140
HSKF.208.63.0180	HSK 63	18	80	50	47	M14X1.5X16	208.00.0140
HSKF.208.63.0200	HSK 63	20	80	52	49	M16X1.5X16	208.00.0160
HSKF.208.63.0250	HSK 63	25	110	65	54	M18X1.5X20	208.00.0180
HSKF.208.63.0320	HSK 63	32	110	72	58	M20X1.5X20	208.00.0200



ACCESSORI PER MACCHINE UTENSILI



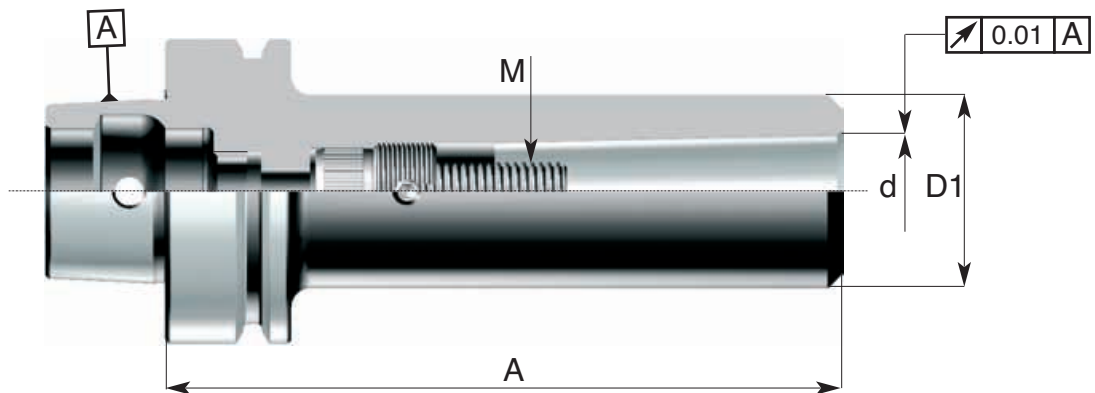
Riduzioni da cono HSK a cono Morse DIN 6364 B per frese con vite interna
 Morse taper adaptors sleeves for cutters with internal screw - DIN 6364 B
 Zwischenhülsen für Morsekegel mit Auzugsgewinde - DIN 6364 B
 Douilles de réduction à cône Morse pour fraises avec vis - DIN 6364 B

Prebilanciato
 Prebalanced
 G6.3 / 8000rpm

DIN 69893/6-F

ART: HSKF.261

1.
47



Codice di ord Code	HSK-F	Cono Morse SK	d	A	D1	M	Vite Screw	Ghiera Nut
HSKF.261.50.0100	HSK 50	Morse 1	12.065	100	25	M6	261.00.0625	261.12.0100
HSKF.261.50.0200	HSK 50	Morse 2	17.780	120	32	M10	261.00.1030	261.15.0200
HSKF.261.50.0300	HSK 50	Morse 3	17.780	140	40	M12	261.00.1240.B	261.00.1220
HSKF.261.63.0100	HSK 63	Morse 1	12.065	100	25	M6	261.00.0625	261.16.1100
HSKF.261.63.0200	HSK 63	Morse 2	17.780	120	32	M10	261.00.1030.B	261.16.1100
HSKF.261.63.0300	HSK 63	Morse 3	23.825	140	40	M12	261.00.1240.E	261.00.1220
HSKF.261.63.0400	HSK 63	Morse 4	31.267	160	48	M16	261.00.1645.B	261.00.1626



1. MANDRINI a cono HSKF DIN 69893/6

TOOL HOLDERS with HSKF cone DIN 69893/6



Riduzioni da cono HSK a cono Morse per punte

Morse taper adaptors sleeves for drills with driving shank

Zwischenhülsen für Morsekegel mit Austreibklappen

Douilles de réduction à cône Morse pour forets avec dents d'entraînement

ACCESSORI PER MACCHINE UTENSILI

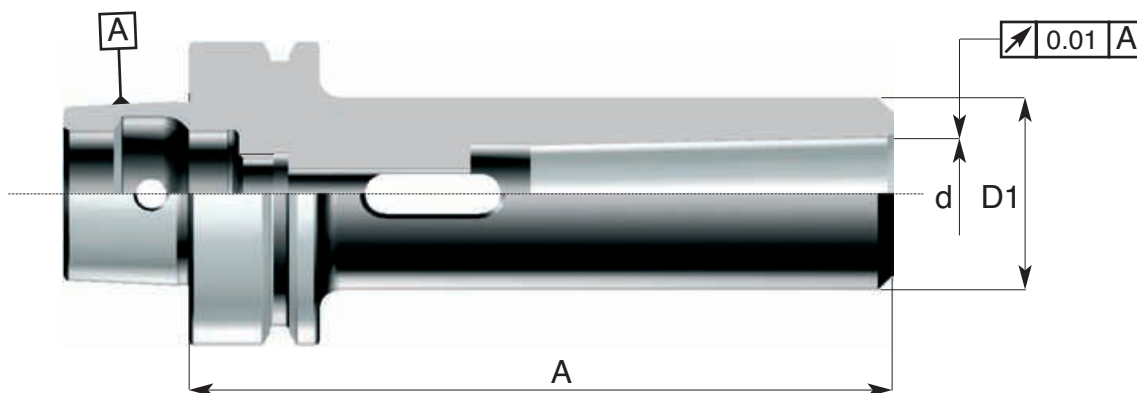


DIN 69893/6-F

Prebilanciato
Prebalanced
G6.3 / 8000rpm

ART: HSKF.262

1.
48



Codice di ord Code	HSKF	Cono Morse	d	A	D1
HSKF.262.50.0100	HSK 50	Morse 1	12.065	100	25
HSKF.262.50.0200	HSK 50	Morse 2	17.780	120	32
HSKF.262.50.0300	HSK 50	Morse 3	17.780	140	40
HSKF.262.63.0100	HSK 63	Morse 1	12.065	100	25
HSKF.262.63.0200	HSK 63	Morse 2	17.780	120	32
HSKF.262.63.0300	HSK 63	Morse 3	23.825	140	40
HSKF.262.63.0400	HSK 63	Morse 4	31.267	160	48

ACCESSORI PER MACCHINE UTENSILI



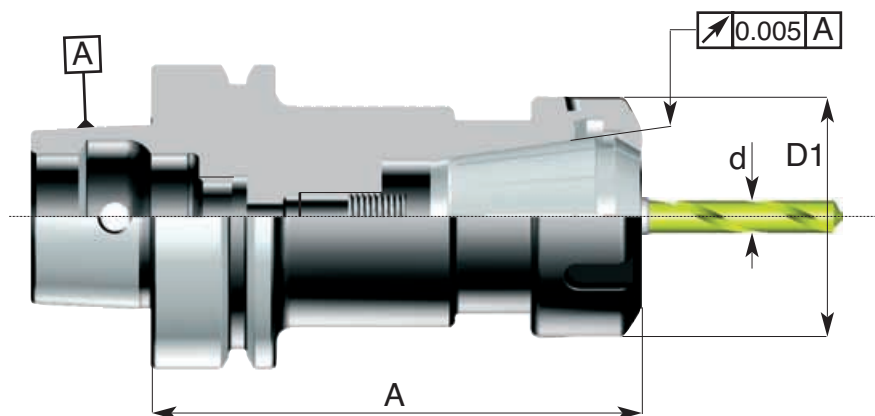
Mandrini portapinze ER DIN 6499 - ghiera standard
 Collet chucks ER DIN 6499 - standard nut
 Spannzangenhalter ER DIN 6499 - standard Spannmutter
 Mandrins porte-pinces ER DIN 6499 - écrou standard

Prebilanciato
 Prebalanced
 G6.3 / 8000rpm

DIN 69893/6-F

ART: HSKF.607
 ghiera standard / standard nut

1.
49



Codice di ord Code	HSK-F	ER	A	D1	Cap. di chiusura Pinza "d" Capacity range "d"	Ghiera Nut	Tipo ghiera Nut type
HSKF.607.50.0160	HSK 50	ER 16	100	28	0,5-10	245.22.ER16	Standard
HSKF.607.50.0162M	HSK 50	ER 16	160	22	0,5-10	245.19.ER16M	Mini
HSKF.607.50.0250	HSK 50	ER 25	100	42	1-16	245.32.ER25	Standard
HSKF.607.50.0320	HSK 50	ER 32	100	50	1-20	245.40.ER32	Standard
HSKF.607.50.0322	HSK 50	ER 32	150	50	1-20	245.40.ER32	Standard
HSKF.607.50.0400	HSK 50	ER 40	100	63	2-30	245.50.ER40	Standard
HSKF.607.63.0160	HSK 63	ER 16	100	28	0,5-10	245.22.ER16	Standard
HSKF.607.63.0162M	HSK 63	ER 16	160	22	0,5-10	245.19.ER16M	Mini
HSKF.607.63.0250	HSK 63	ER 25	100	42	1-16	245.32.ER25	Standard
HSKF.607.63.0320.C	HSK 63	ER 32	70	50	1-20	245.40.ER32	Standard
HSKF.607.63.0320	HSK 63	ER 32	100	50	1-20	245.40.ER32	Standard
HSKF.607.63.0322	HSK 63	ER 32	150	50	1-20	245.40.ER32	Standard
HSKF.607.63.0400.C	HSK 63	ER 40	70	63	2-30	245.50.ER40	Standard
HSKF.607.63.0400	HSK 63	ER 40	100	63	2-30	245.50.ER40	Standard