

DIN 69880/VDI 3425
Portautensili VDI
per torni CN
Tool holders for
CNC lather

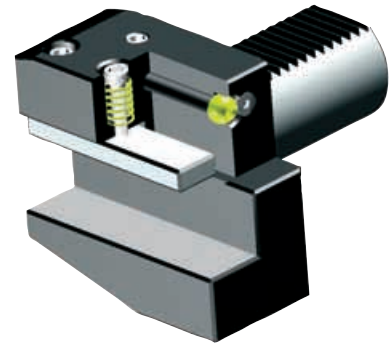
15

 **delta**

15. PORTAUTENSILI per torni a CN DIN 69880 VDI 3425
TOOL HOLDERS for CNC lathes DIN 69880 VDI 3425

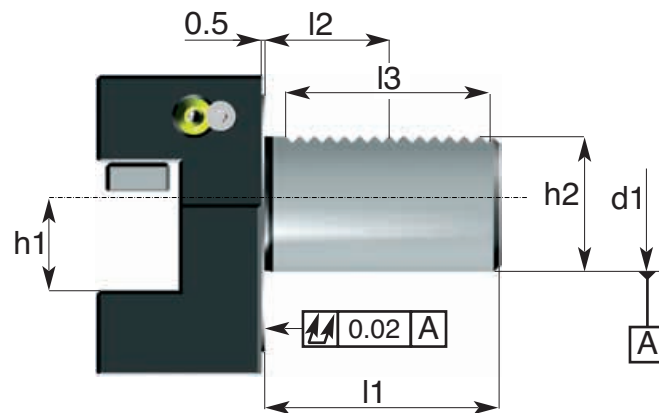
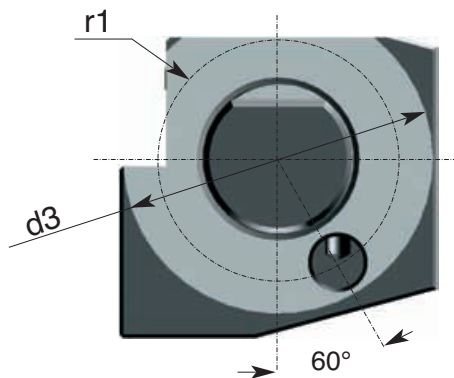


ACCESSORI PER MACCHINE UTENSILI



DIN 69880 - VDI 3425

Attacchi DIN 69880 / VDI 3425



Riferimento Item	d1 h6	d2 H8	d3	l1	l2 ±0.05	l3	h1 max	h2 ±0.1	r1 ±0.02
VDI 20	20	10	50	40	21.7	32	16	18	18
VDI 30	30	14	68	55	29.7	48	20	27	25
VDI 40	40	14	83	63	29.7	48	25	36	32
VDI 50	50	16	98	78	35.7	56	32	45	37

**CARATTERISTICHE TECNICHE
DEI MANDRINI TC**

- Costruiti in acciaio da cementazione legato al NiCrMo
- Cementati con profondità 0,8-1mm
Temprati • Rinvenuti • Sabbati e bruniti
- Durezza HRC 58±2 • Resistenza al nucleo 800-1000 N/mm²
- Rettificati di precisione esternamente, internamente e nelle filettature delle ghiera chiudipinza
- Controllati con strumenti di misura certificati

**STANDARD FEATURES
OF TC TOOLING**

- Manufactured with Nickel Chrome Molybdenum steel
- Carburized with depth of case 0,8-1 mm
• Hardened and tempered • Black oxidized
- Surface Hardness RC 58±2 • Tensile strenght of core 800-1000 N/mm²
- Precision ground on shanks, inside tapers and collet nut threads
- Tested with high precision inspection and gaging equipment

ACCESSORI PER MACCHINE UTENSILI

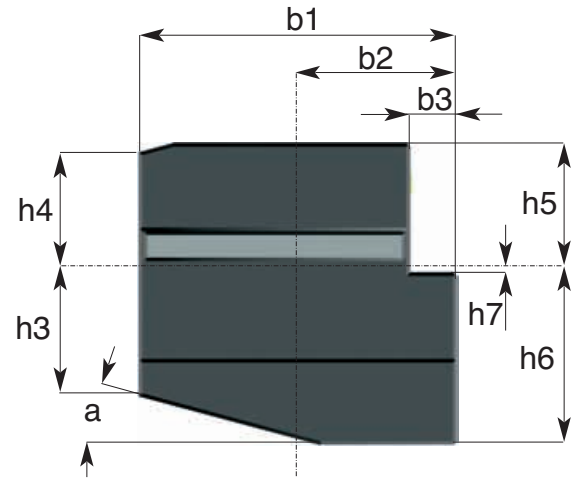
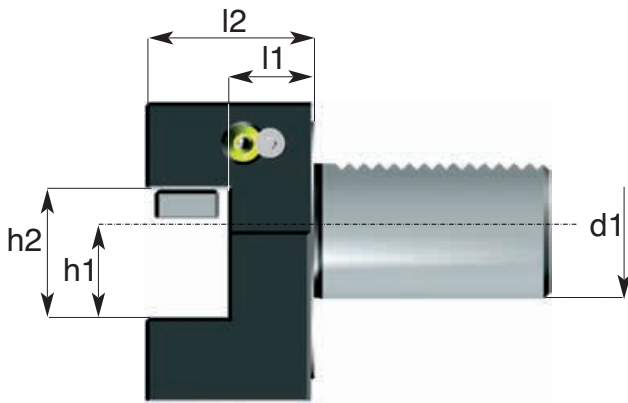


Portautensile destro corto con sede trasversale rettangolare
Radial right short turning tool holder
Vierkant-Queraufnahme rechts kurz
Porte-outil radial carré droite court

DIN 69880/3 B1

ART: 904

15.
3



Codice di ord <i>Code</i>	d1	b1	b2	b3	h1	h2	h3	h4	h5	h6	h7	l1	l2	a
904.20.1630	20	55	30	7	16	22	19	19	25	30	2	16	30	15°
904.30.2040	30	70	35	10	20	29	26	22	28	38	2	22	40	15°
904.40.2544	40	85	42,5	12,5	25	34	35	30	32,5	48	2	22	44	15°
904.50.3255	50	100	50	16	32	41	42	35	35	60	2	30	55	15°

15. PORTAUTENSILI per torni a CN DIN 69880 VDI 3425

TOOL HOLDERS for CNC lathes DIN 69880 VDI 3425



Portautensile sinistro corto con sede trasversale rettangolare

Radial left short turning tool holder

Vierkant-Queraufnahme links kurz

Porte-outil radial carré gauche court

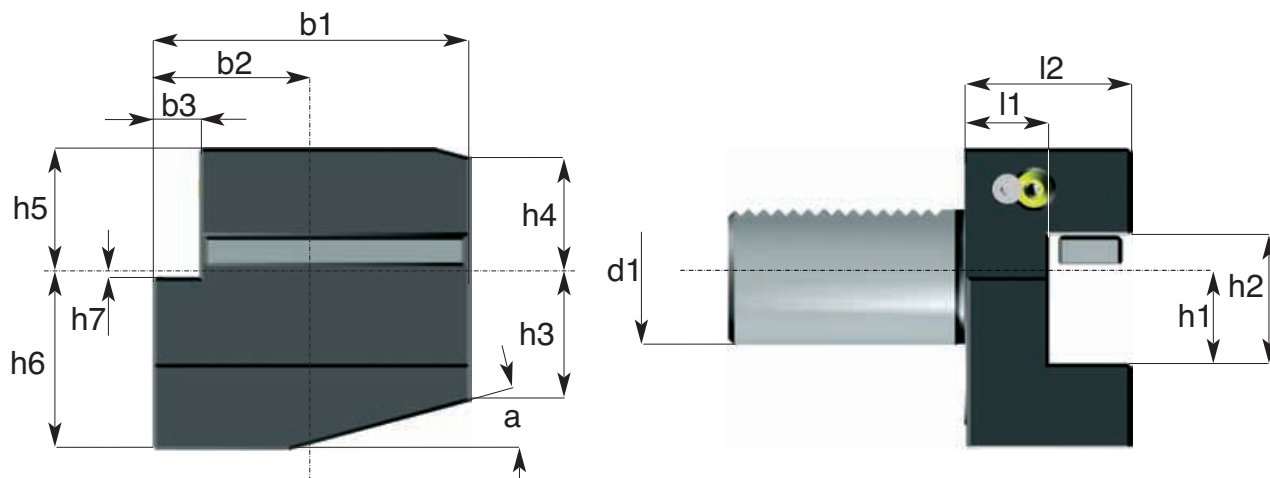
ACCESSORI PER MACCHINE UTENSILI



DIN 69880/3 B2

ART: 906

15.
4



Codice di ord Code	d1	b1	b2	b3	h1	h2	h3	h4	h5	h6	h7	l1	l2	a
906.20.1630	20	55	30	7	16	22	19	19	25	30	2	16	30	15°
906.30.2040	30	70	35	10	20	29	26	22	28	38	2	22	40	15°
906.40.2544	40	85	42,5	12,5	25	34	35	30	32,5	48	2	22	44	15°
906.50.3255	50	100	50	16	32	41	42	35	35	60	2	30	55	15°

ACCESSORI PER MACCHINE UTENSILI

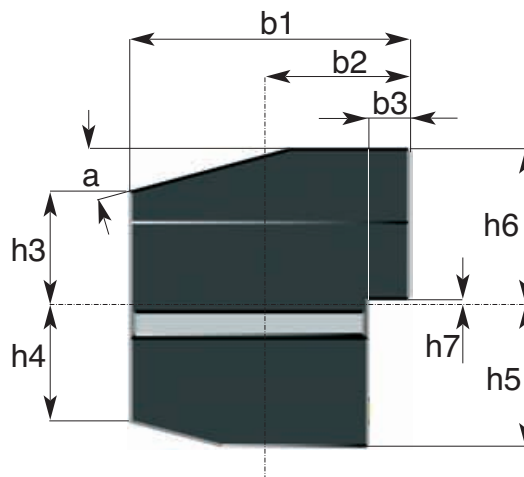
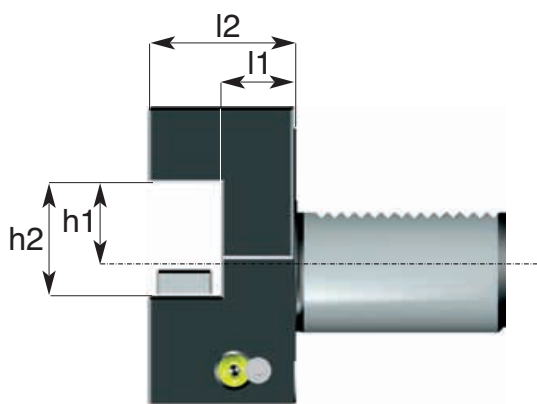
Portautensile rovesciato destro corto con sede trasversale rettangolare
 Overhead right short turning tool holder
 Vierkant-Queraufnahme Überkopf rechts kurz
 Porte-outil radial inversé carré droite court



DIN 69880/3 B3

ART: 908

15.
5



Codice di ord Code	d1	b1	b2	b3	h1	h2	h3	h4	h5	h6	h7	l1	l2	a
908.20.1630	20	55	30	7	16	22	19	19	25	30	2	16	30	15°
908.30.2040	30	70	35	10	20	29	26	22	35	38	2	22	40	15°
908.40.2544	40	85	42,5	12,5	25	34	35	30	42,5	48	2	22	44	15°
908.50.3255	50	100	50	16	32	41	42	35	50	60	2	30	55	15°

15. PORTAUTENSILI per torni a CN DIN 69880 VDI 3425

TOOL HOLDERS for CNC lathes DIN 69880 VDI 3425



Portautensile rovesciato sinistro corto con sede trasversale rettangolare

Overhead left short turning tool holder

Vierkant-Queraufnahme Überkopf links kurz

Porte-outil radial inversé carré gauche court

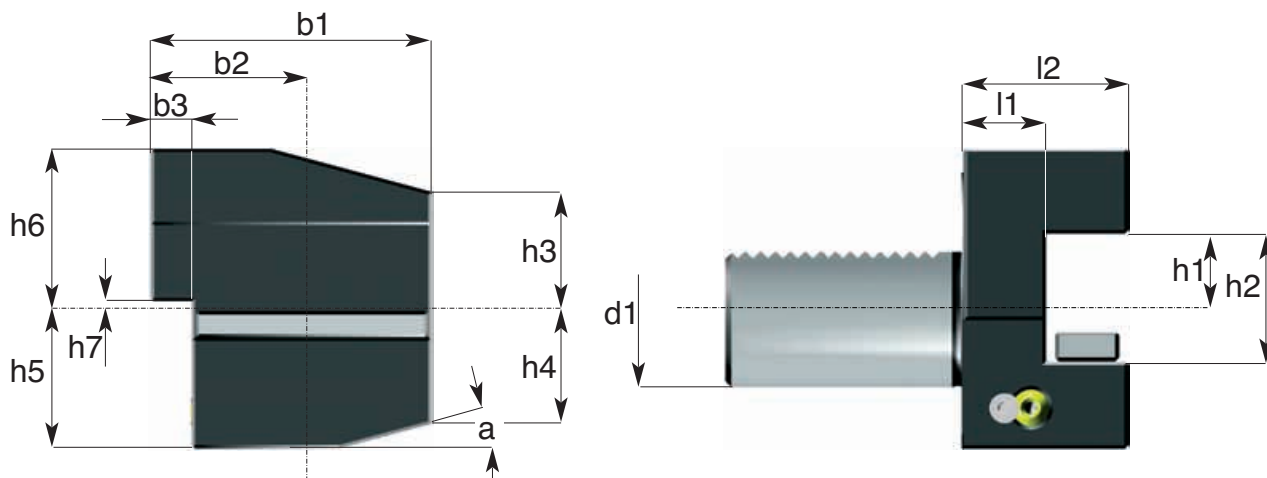
ACCESSORI PER MACCHINE UTENSILI



DIN 69880/3 B4

ART: 910

15.
6



Codice di ord Code	d1	b1	b2	b3	h1	h2	h3	h4	h5	h6	h7	l1	l2	a
910.20.1630	20	55	30	7	16	22	19	19	25	30	2	16	30	15°
910.30.2040	30	70	35	10	20	29	26	22	35	38	2	22	40	15°
910.40.2544	40	85	42,5	12,5	25	34	35	30	42,5	48	2	22	44	15°
910.50.3255	50	100	50	16	32	41	42	35	50	60	2	30	55	15°

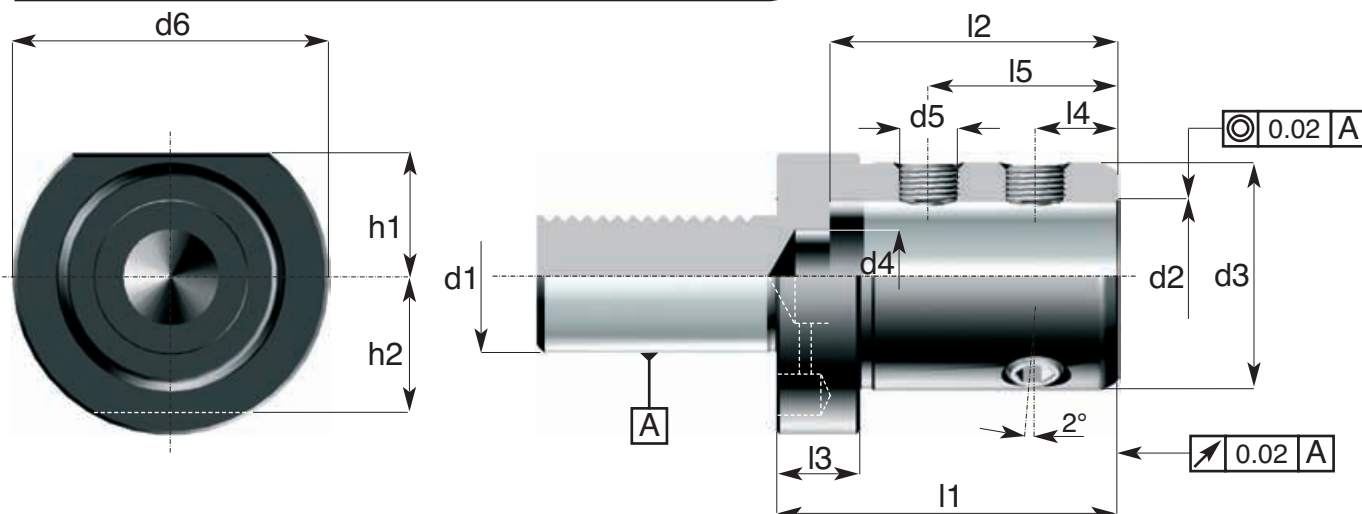
ACCESSORI PER MACCHINE UTENSILI

Portautensile per utensili cilindrici con lubrificazione interna
 Tool holder for tools with cylindrical shaft with inner cooling system
 Werkzeughalter mit Zylinderschaft für Werkzeuge mit Kühlrohr
 Porte-outil pour outils cylindriques avec lubrification interne

DIN 69880/3 E1

ART: 940

15.
7



Codice di ord Code	d1	d2 H6	d3	d4	d5	d6	h1	h2	l1	l2	l3	l4	l5
940.20.0160	20	16	36	12	M 10 X 1	50	23	23	67	54	18	15	35
940.20.0200	20	20	40	12	M 10 X 1	50	23	23	67	54	18	15	35
940.20.0250	20	25	45	17	M 12 X 1	50	23	23	71	59	18	17	40
940.30.0160	30	16	36	12	M 10 X 1	68	28	30	67	54	22	15	35
940.30.0200	30	20	40	12	M 10 X 1	68	28	30	67	54	22	15	35
940.30.0250	30	25	45	17	M 12 X 1	68	28	30	71	59	22	17	40
940.30.0320	30	32	52	24	M 12 X 1	68	28	30	75	63	22	20	44
940.30.0400	30	40	60	32	M 16 X 1	68	28	30	90	73	22	22	50
940.40.0160	40	16	36	12	M 10 X 1	83	32,5	-	67	54	22	15	35
940.40.0200	40	20	40	12	M 10 X 1	83	32,5	-	67	54	22	15	35
940.40.0250	40	25	45	17	M 12 X 1	83	32,5	-	75	59	22	17	40
940.40.0320	40	32	52	24	M 12 X 1	83	32,5	-	75	63	22	20	44
940.40.0400	40	40	60	32	M 16 X 1	83	32,5	-	90	73	22	22	54
940.40.0500	40	50	70	32	M 16 X 1	83	32,5	-	100	83	22	24	60
940.50.0200	50	20	40	12	M 10 X 1	98	35	-	67	54	30	15	35
940.50.0250	50	25	45	17	M 12 X 1	98	35	-	80	59	30	17	40
940.50.0320	50	32	52	24	M 12 X 1	98	35	-	80	63	30	20	44
940.50.0400	50	40	60	32	M 16 X 1	98	35	-	100	73	30	22	54
940.50.0500	50	50	70	42	M 16 X 1	98	35	-	100	83	30	24	60

15. PORTAUTENSILI per torni a CN DIN 69880 VDI 3425

TOOL HOLDERS for CNC lathes DIN 69880 VDI 3425



Portautensile per utensili cilindrici

Tool holder for tools with cylindrical shaft

Zylinderaufnahme für Drehwerkzeuge mit Zylinderschaft

Porte-outil pour outils cylindriques de tour

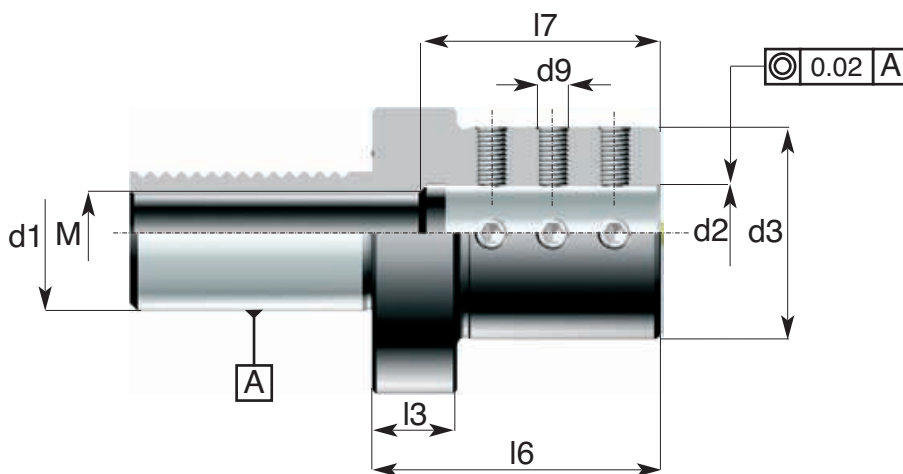
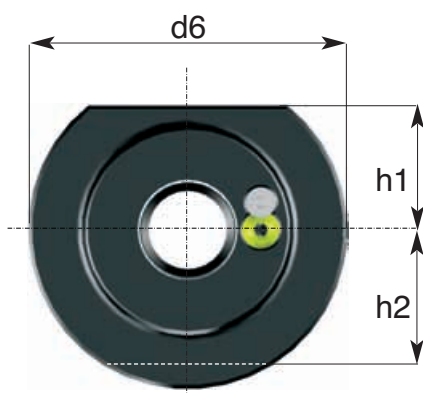
ACCESSORI PER MACCHINE UTENSILI



DIN 69880/3 E2

ART: 942

15.
8



Codice di ord Code	d1	d2 H7	d3	d6	d7	d9	h1	h2	l3	l6	l7	M
942.20.0080	20	8	40	50	9	M 6	23	123	18	50	41	M 10 X 1
942.20.0100	20	10	40	50	9	M 6	23	23	18	50	41	M 10 X 1
942.20.0120	20	12	40	50	9	M 8	23	23	18	50	41	M 10 X 1
942.20.0160	20	16	40	50	9	M 8	23	23	18	50	41	M 10 X 1
942.20.0200	20	20	50	50	9	M 8	23	23	-	50	41	M 10 X 1
942.20.0250	20	25	50	50	9	M 8	-	23	-	60	51	M 10 X 1
942.30.0080	30	8	55	68	16,5	M 6	28	30	22	60	51	M 18 X 1,5
942.30.0100	30	10	55	68	16,5	M 6	28	30	22	60	51	M 18 X 1,5
942.30.0120	30	12	55	68	16,5	M 8	28	30	22	60	51	M 18 X 1,5
942.30.0160	30	16	55	68	16,5	M 8	28	30	22	60	51	M 18 X 1,5
942.30.0200	30	20	55	68	16,5	M 8	28	30	22	60	51	M 18 X 1,5
942.30.0250	30	25	55	68	16,5	M 8	28	30	22	60	51	M 18 X 1,5
942.30.0320	30	32	68	68	16,5	M 8	28	30	-	75	61	M 18 X 1,5
942.40.0080	40	8	55	83	20,5	M 8	32,5	-	22	75	61	M 22 X 1,5
942.40.0100	40	10	55	83	20,5	M 8	32,5	-	22	75	61	M 22 X 1,5
942.40.0120	40	12	55	83	20,5	M 8	32,5	-	22	75	61	M 22 X 1,5
942.40.0160	40	16	55	83	20,5	M 10	32,5	-	22	75	61	M 22 X 1,5
942.40.0200	40	20	55	83	20,5	M 10	32,5	-	22	75	61	M 22 X 1,5
942.40.0250	40	25	55	83	20,5	M 10	32,5	-	22	75	61	M 22 X 1,5
942.40.0320	40	32	83	83	20,5	M 10	32,5	-	-	75	61	M 22 X 1,5
942.40.0400	40	40	83	83	20,5	M 10	32,5	-	-	90	76	M 22 X 1,5
942.50.0120	50	12	68	98	26,5	M 10	35	-	30	90	76	M 28 X 1,5
942.50.0160	50	16	68	98	26,5	M 10	35	-	30	90	76	M 28 X 1,5
942.50.0200	50	20	68	98	26,5	M 12	35	-	30	90	76	M 28 X 1,5
942.50.0250	50	25	68	98	26,5	M 12	35	-	30	90	76	M 28 X 1,5
942.50.0320	50	32	68	98	26,5	M 12	35	-	30	90	76	M 28 X 1,5
942.50.0400	50	40	98	98	26,5	M 12	35	-	-	90	76	M 28 X 1,5
942.50.0500	50	50	98	98	26,5	M 12	35	-	-	100	86	M 28 X 1,5

ACCESSORI PER MACCHINE UTENSILI

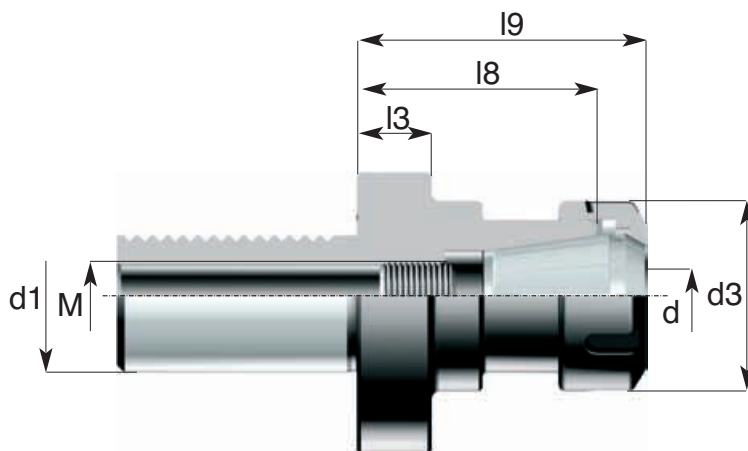
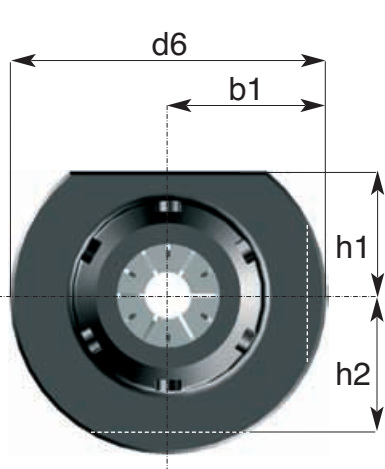
Mandrini portapinze ER DIN 6499
 Collet chucks ER DIN 6499
 Spannzangenhalter ER DIN 6499
 Mandrins porte-pinces ER DIN 6499

DIN 69880/3 E4



ART: 944
 ghiera standard / standard nut

15.
9



Pinze / Collets
 pag: 12.6

Ghiera / Nuts
 pag: 12.13

Codice di ord Code	d1	ER	Capacità Pinza "d"	d3	d6	b1	l3	l8	l9	h1	h2	M
944.20.0160	20	ER 16	0,5 - 10	28	50	-	18	30	40	23	23	M 10 X 1
944.20.0250	20	ER 25	1 - 16	42	50	-	18	38	50	23	23	M 10 X 1
944.20.0320	20	ER 32	1 - 20	50	50	-	18	48	60	23	23	M 10 X 1
944.20.0400	20	ER 40	2 - 30	63	50	-	22	52	66	23	23	M 10 X 1
944.30.0250	30	ER 25	1 - 16	42	68	30	22	63	75	28	30	M 18 X 1,5
944.30.0320	30	ER 32	1 - 20	50	68	30	22	63	75	28	30	M 18 X 1,5
944.30.0400	30	ER 40	2 - 30	63	68	30	22	61	75	28	30	M 18 X 1,5
944.40.0250	40	ER 25	1 - 16	42	83	-	22	63	75	32,5	-	M 22 X 1,5
944.40.0320	40	ER 32	1 - 20	50	83	-	22	63	75	32,5	-	M 22 X 1,5
944.40.0400	40	ER 40	2 - 30	63	83	-	22	61	75	32,5	-	M 22 X 1,5
944.50.0400	50	RE 40	2 - 30	63	98	-	30	61	75	35	-	M 28 X 1,5

15. PORTAUTENSILI per torni a CN DIN 69880 VDI 3425

TOOL HOLDERS for CNC lathes DIN 69880 VDI 3425



Portautensile per utensili a cono Morse con tenone

Tool holder for Morse shank tools with tang
 Werkzeughalter für Kegelschäfte mit Austreibblappen
 Porte-outil pour outils à cône Morse à tenon

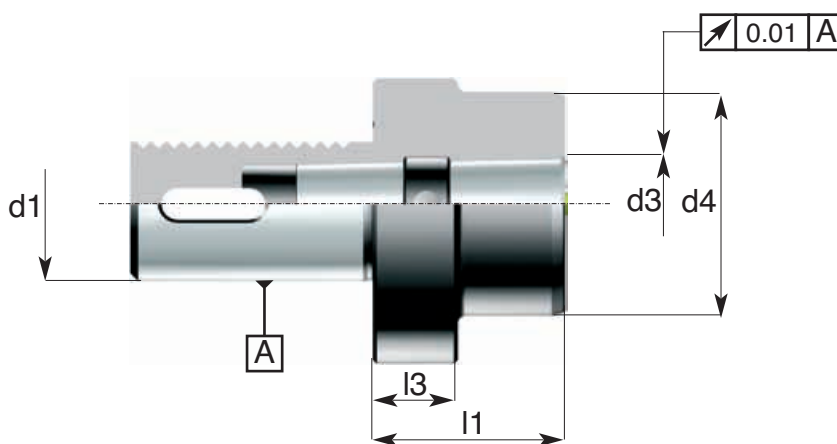
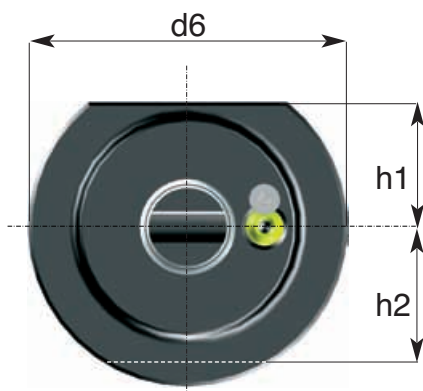
ACCESSORI PER MACCHINE UTENSILI



DIN 69880/3 F

ART: 946

15,
10



Codice di ord Code	d1	MK	d2	d3	d4	h1	h2	l1	l3
946.20.0100	20	1	50	12,065	-	23	23	23	-
946.30.0100	30	1	68	12,065	-	28	30	27	-
946.30.0200	30	2	68	17,780	-	28	30	27	-
946.30.0300	30	3	68	23,825	-	28	30	45	-
946.40.0100	40	1	83	31,267	55	32,5	-	36	22
946.40.0200	40	2	83	17,780	55	32,5	-	36	22
946.40.0300	40	3	83	23,825	58	32,5	-	36	22
946.40.0400	40	4	83	31,267	68	32,5	-	80	22
946.50.0200	50	2	98	17,780	55	35	-	36	30
946.50.0300	50	3	98	23,825	58	35	-	36	30
946.50.0400	50	4	98	31,267	68	35	-	50	30

ACCESSORI PER MACCHINE UTENSILI

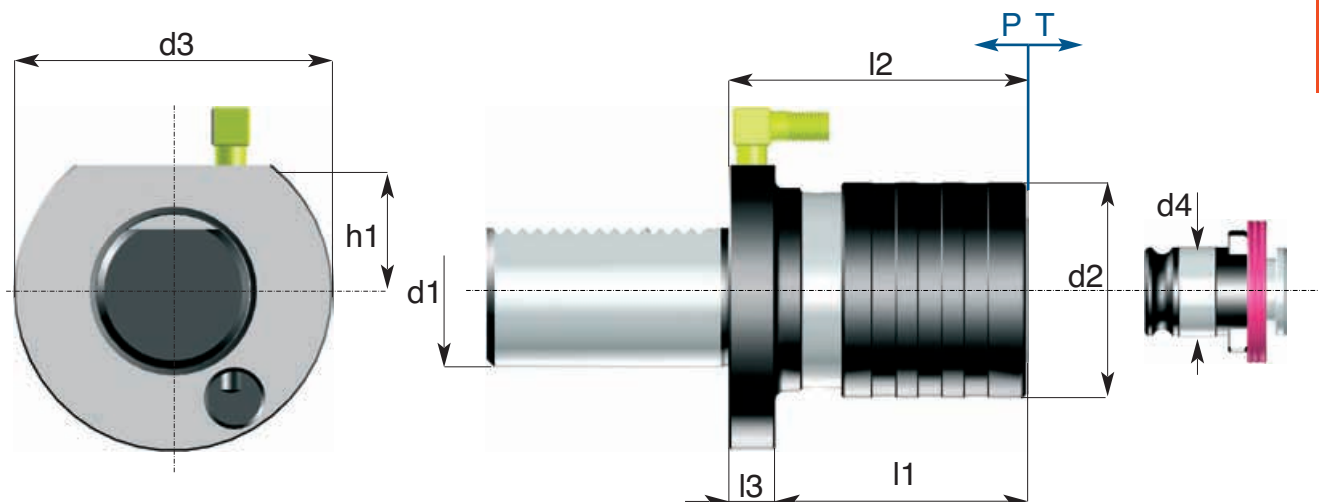
Portautensile con lubrificazione interna portamaschio ad attacco rapido
 Quick change tapping tool holder with inner cooling system
 Gewindeschneidfutter - Klemmering mit Kühlrohr
 Porte-outil pour tarauder à changement rapide avec lubrification interne



DIN 69880/3

ART: 948

15.
11



Codice di ord Code	d1	d2	d3	d4	h1	l1	l2	l3	Capacità maschiatore Tapping capacity	Compensazione assiale Axial compensation P
948.30.1205	30	36	68	19	28	43	55	12	M 3 - 12	5 7
948.30.2008	30	53	68	31	28	64	76	12	M 8 - 20	12 13
948.40.1205	40	36	83	19	32,5	47	55	12	M 3 - 12	5 7
948.40.2008	40	53	83	31	32,5	64	76	12	M 8 - 20	12 13
948.50.2008	50	53	98	31	35	67	79	12	M 8 - 20	12 13
948.50.3310	50	78	98	48	35	96	108	12	M 14 - 33	15 20



15. PORTAUTENSILI per torni a CN DIN 69880 VDI 3425 TOOL HOLDERS for CNC lathes DIN 69880 VDI 3425



Puntalino arrestobarra regolabile ed ammortizzato

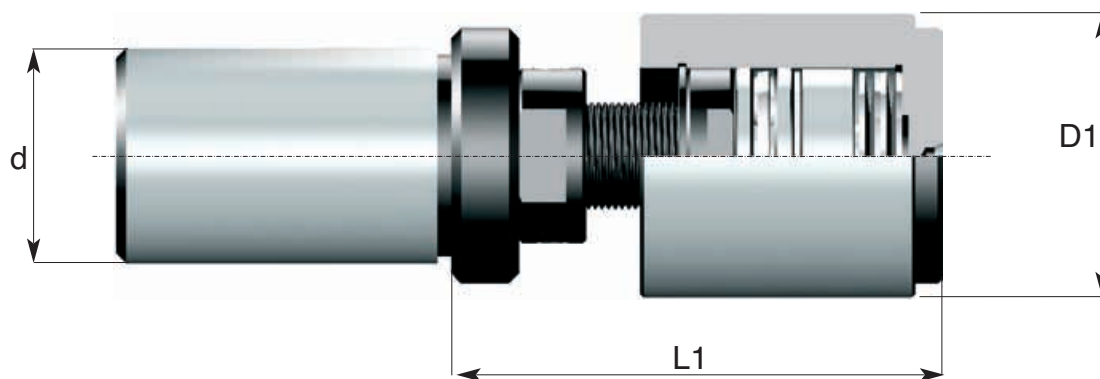
Adjustable bar-stop shock-absorber
Einstellbare Drückstück- Stangesperre
Butée de barre réglable amortie

ACCESSORI PER MACCHINE UTENSILI



ART: 234

15,
12



Codice di ord Code	d	D1	Min	L1	Max
234.25.0420	25	42	67		80
234.32.0420	32	42	67		80



delta

www.delta-spa.com



PORTAUTENSILI A CONO ISO DIN 2088 E MORSE PER MACCHINE UTENSILI TRADIZIONALI
CONTROPUNTE ROTANTI E FISSE - MANDRINI MASCHIATORI A CAMBIO RAPIDO

TOOLHOLDERS FOR MILLING AND DRILLING MACHINES WITH ISO AND MORSE
PRECISION RUNNING TAIL CENTERS - QUICK CHANGE TAPPING CHUCKS

PORTAUTENSILI A CONO ISO DIN 69871/A-B, CAT E MAS BT 403 PER CENTRI DI LATO
A CONTROLLO NUMERICO

TOOLHOLDERS FOR CNC MACHINERY WITH ISO DIN 69871/A-B, CAT AND MAS BT 403

PORTAUTENSILI CON ATTACCO HSK DIN 69893 FORMA A -

TOOLHOLDERS WITH HSK TAPER DIN 69893 FORM A -

MANDRINO HYDRO DELTA A CHIUSURA IDRAULICA

HYDRO DELTA CHUCKS HYDRAULIC CLAMP

PORTAUTENSILI PER TORNI A CONTROLLO NUMERICO DIN 69880 UDI 3

TOOLHOLDERS FOR NC LATHES DIN 69880 UDI 3

MANDRINI MACCHINA PRINCIPALI - PORTAUTENSILI SPECIALI A DISEGNO CLIENTI

MACHINE MAIN SPINDLES - SPECIAL TOOLHOLDERS ON CUSTOMER'S REQUEST